



313 West Main Street  
Azle, TX 76020  
Phone: 817-270-4817  
Website: www.cypressdrilling.com

**WHO IS CYPRESS?**

We operate approximately 1.6 miles of natural gas gathering lines in Cameron Parish, Louisiana along with typical oil & gas production.

If you observe any unusual or suspicious activity near our pipeline or facility or in the event of an emergency, please call us at anytime using our number listed in this document.

**WHAT ARE THE SIGNS OF A NATURAL GAS PIPELINE LEAK?**

- Blowing or hissing sound
- Dust Blowing from a hole in the ground
- Continuous bubbling in wet or flooded areas
- Flames, if a leak has ignited
- Gaseous or hydrocarbon odor
- Dead or discolored vegetation in a green area

**WHAT SHOULD I DO IF I SUSPECT A PIPELINE LEAK?**

Your personal safety should be your first concern:

- Evacuate the area and prevent anyone from entering
- Abandon any equipment being used near the area
- Avoid any open flames
- Avoid introducing any sources of ignition to the area (such as cell phones, pagers, 2-way radios)
- Do not start/turn off motor vehicles/ electrical equipment
- Call 911 or contact local fire or law enforcement
- Notify the pipeline company
- Do not attempt to extinguish a natural gas fire
- Do not attempt to operate any pipeline valves

**PIPELINE SAFETY**

System failures occur infrequently along the nation's network of interstate natural gas pipeline facilities, and many of these are caused by damage from others digging near the pipeline. We watch for unauthorized digging, but we request your help to notify us.

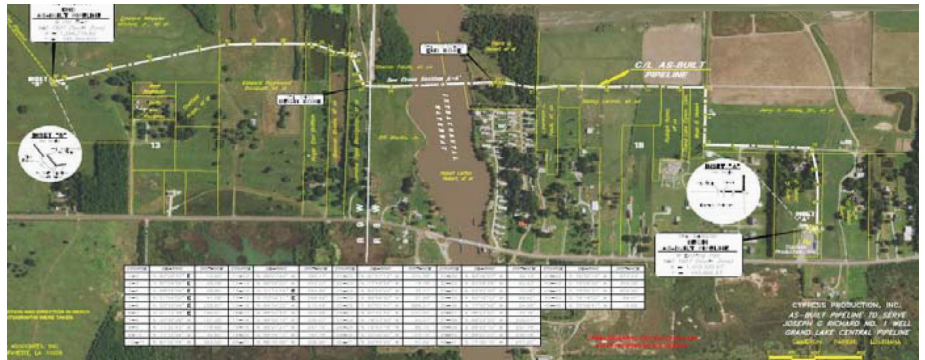
**PIPELINE LOCATION AND MARKERS**

Pipeline markers are used to indicate the approximate location of a natural gas pipeline and to provide contact information. Markers should never be removed or relocated by anyone other than a pipeline operator.



**EMERGENCY RESPONSE PLAN**

An Emergency Response Plan is developed for each pipeline facility to contain, control and mitigate the various types of emergency conditions/ situation that could occur at one of our



**EMERGENCY CONTACT:**  
817-789-5352

**PRODUCTS/DOT GUIDEBOOK ID#/GUIDE#:**  
Natural Gas 1971 115

**LOUISIANA PARISHES OF OPERATION:**  
Cameron

*Changes may occur. Contact the operator to discuss their pipeline systems and areas of operation.*

facilities. For more information regarding Cypress emergency response plans and procedures, contact us at [jdugas@hlpengineering.com](mailto:jdugas@hlpengineering.com)

**ALWAYS CALL 811 BEFORE YOU DIG!**

We participate in One-Call Centers and strongly encourage those who are going to dig to call their state One-Call Center or the 811 "Call before you dig" hotline.



**Know what's below.  
Call before you dig.**