

Marathon Petroleum Corporation
 212 N. Clark St.
 El Paso, TX 79905915-775-3300
 www.marathonpetroleum.com



COMPANY PROFILE

Andeavor (formerly Western Refining) has joined Marathon Petroleum Corp. (NYSE: MPC) to become a leading U.S. refining, marketing and midstream company. MPC is the nation's largest refiner, with a crude oil refining capacity of more than 3 million barrels per calendar day in its 16-refinery system. MPC's high-quality, nationwide retail and marketing business includes approximately 3,900 company-owned and operated stores and 7,800 branded locations. MPC also owns the general partners of MPLX LP and Andeavor Logistics LP, two strong, customer-focused midstream master limited partnerships.

ENVIRONMENTAL, HEALTH & SAFETY COMMITMENT

At Marathon Petroleum, we are committed to conducting business in a manner that promotes the safety, health and security of those working and living in communities near our facilities, while protecting the environment and sustaining the ecosystems in which we do business.

Environment

We operate in environmentally sensitive and diverse locations that have varying and complex regulations. We use and strengthen our procedures, programs, tools and systems to assist us in managing compliance with existing regulations and to establish processes that allow continuous improvement and go beyond regulatory compliance. To do this, we develop locally managed goals and performance targets. At a corporate level, we review our management of key material issues, including our environmental footprint.

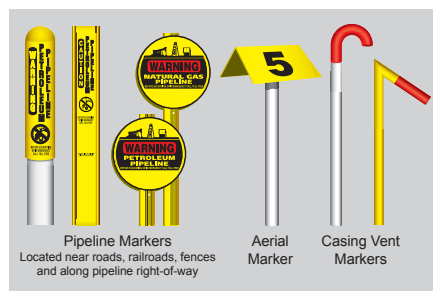
Health & Safety

Marathon Petroleum is committed to operating our refineries, pipelines, retail stations and other facilities in a manner that promotes the safety, health and security of our employees, our customers and the communities where we do business. Continuously improving personal and process safety is one of our core values. Our goal targets zero incidents that harm our employees, contractors or neighbors, or put our facilities at risk.

ANDEAVOR PIPELINE LOCATION AND MARKERS









Examples of pipeline markers that can be found along Marathon Petroleum pipeline systems are shown below. These are important indicators of where Marathon Petroleum pipeline systems are located, as most pipelines are underground. Marathon's

emergency response contact number is located on the marker for reporting any leaks, unauthorized excavation or suspicious activities near the pipeline system.



Excavators, developers, homeowners or anyone planning excavation activities are required to call 811 at least two days prior to starting any work. Qualified Marathon Petroleum pipeline operators will mark the location of the pipeline in accordance with APWA and state specific marking requirements.

You'll know what's below by the different flags, stakes and paint

-  **Red** - Electric
-  **Yellow** - Gas, oil or petroleum
-  **Orange** - Communications
-  **Blue** - Potable water
-  **Purple** - Reclaimed water, irrigation
-  **Green** - Sewer
-  **White** - Proposed excavation
-  **Pink** - Temporary survey



ADDITIONAL INFORMATION

Andeavor - www.marathonpetroleum.com
 Approximate location of pipelines in your area: www.npms.phmsa.dot.gov

EMERGENCY CONTACT:
1-915-775-3411

PRODUCTS/DOT GUIDEBOOK ID#/GUIDE#:		
Diesel	UN1202	128
Jet-A	UN1863	128

Andeavor MSDS Sheets: <https://www.marathonpetroleum.com/Operations/Retail/Safety-Data-Sheets/>

TEXAS
COUNTIES OF OPERATION:

El Paso

Changes may occur. Contact the operator to discuss their pipeline systems and areas of operation.

EMERGENCY RESPONSE

Marathon Petroleum's goal is to share information pertinent to emergency preparedness. Andeavor will provide information to local emergency responders upon request. However, it is critical to recognize the signs of a leak and prepare the appropriate response.

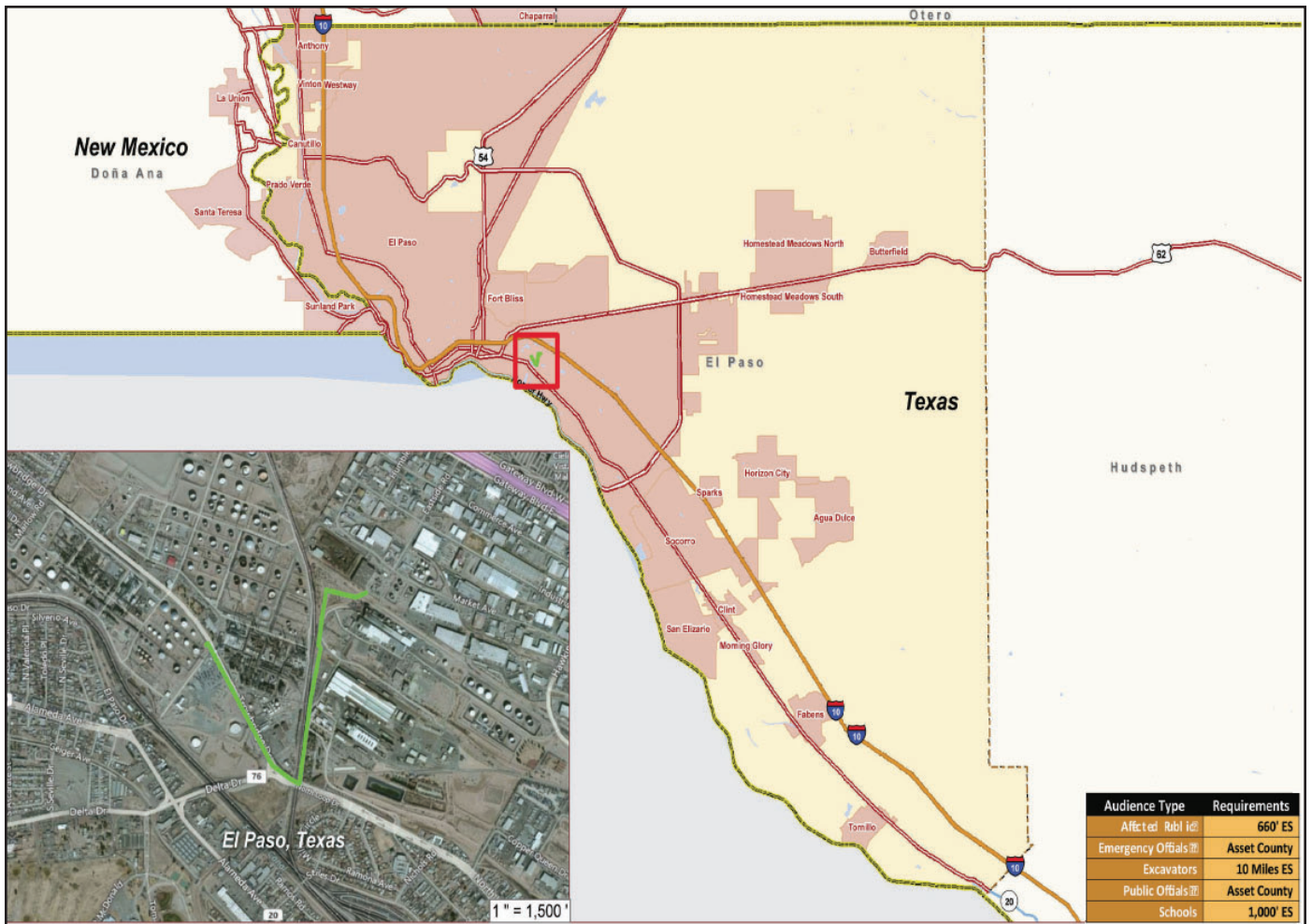
Warning Signs:

- A pool of liquid on the ground
- A rainbow sheen on the water
- Continuous bubbling in water
- Discolored or dead vegetation
- Dirt or water being blown into the air
- White vapor cloud
- Frozen areas or vegetation
- Unusual hissing or roaring sound
- Odors such as gasoline, oil, sulfur and rotten eggs

Emergency Response:

- DO Eliminate all ignition sources - all equipment used must be grounded
- DO NOT touch or walk through spilled material
- DO stand upwind
- DO Isolate spill or leak area for at least 100 meters (330 feet) in all directions
- DO Keep unauthorized personnel away
- DO call 911 and evacuate the area in case of emergency
- DO NOT attempt to turn valves
- DO NOT attempt to move vehicles or equipment from the area

Marathon Petroleum Corporation (El Paso)



Audience Type	Requirements
Affected Rbl id:	660' ES
Emergency Officials:	Asset County
Excavators:	10 Miles ES
Public Officials:	Asset County
Schools:	1,000' ES

1" = 4.86 mi

Some data provided by: US Census Bureau 2010 TIGER/Line® Shapefiles and CeleritasWorks, LLC™

**Western Refining (El Paso)
System Map**
2014 Right-of-Way System Illustration

© Copyright 2007 - 2011 CeleritasWorks, LLC. All Rights Reserved



Created: 7/26/12