



**ABOUT NRG TEXAS POWER LLC**

NRG Texas Power LLC (NRG), headquartered in Houston TX, is an electric power generation company with a 0.3 mile pipeline in Fort Bend County, TX. NRG Texas Power LLC employees and its pipeline are located near Richmond TX. The Petra Nova CCS Pipeline operated by NRG Texas Power LLC is comprised of one Liquid CO2 Pipeline used to collect CO2 recovered from the W A Parish Electric Generation Plant. The CO2 is delivered to Harvest Pipeline and used for enhanced oil recovery. NRG Texas Power LLC monitors its pipeline system with a SCADA system that notifies employees when the system operates outside normal parameters. Field personnel patrol the system daily and respond to alarms 24 hours a day.

**WHAT DOES NRG ENERGY DO IF A LEAK OCCURS?**

NRG safety policy calls for a generating unit to be shut down if it is running with a known gas leak. Double block and bleed procedures are used to isolate the leak before pipe purging and repair can begin.

**MAINTAINING SAFETY AND INTEGRITY OF PIPELINES**

Gas pipelines are monitored 24 hours a day via manned control centers. NRG Texas, LLC – on an annual basis Cedar Bayou Power Plant utilizes an on-ground observer to identify potential dangers.

**HOW TO GET ADDITIONAL INFORMATION**

For an overview of NRG Energy, go to [www.nrgenergy.com](http://www.nrgenergy.com) or contact us at 713-537-2544.

**EMERGENCY CONTACT:**

1-713-537-2544

**PRODUCTS/DOT GUIDEBOOK ID#/GUIDE#:**

Carbon Dioxide 1013 120

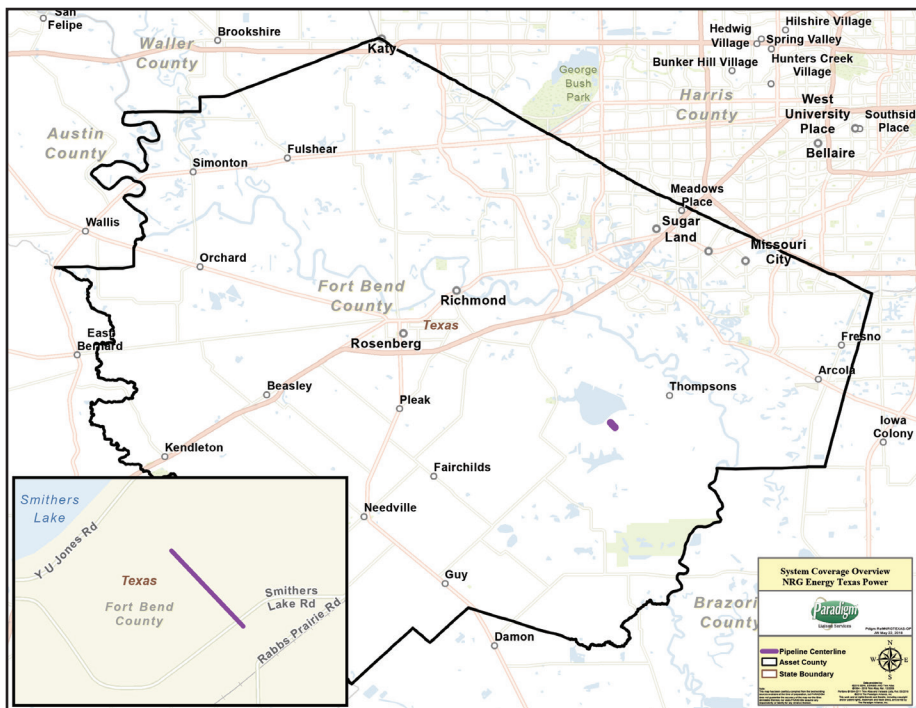
**TEXAS COUNTIES OF OPERATION:**

Fort Bend

*Changes may occur. Contact the operator to discuss their pipeline systems and areas of operation.*

**PRODUCTS TRANSPORTED**

PRODUCT	LEAK TYPE	VAPORS
PURITY LIQUID CO2	Vapor Cloud	High concentrations of this gas can also cause an oxygen-deficient environment. However, the asphyxiating properties of Carbon Dioxide will be reached before oxygen-deficiency is a factor.
<b>HEALTH HAZARDS</b>	Contact of the cold gas with the skin can lead to frostbite or dermatitis (red, cracked, irritated skin), depending upon concentration and duration of exposure. Contact of the cold gas, or solid dry ice with the eyes can cause pain, redness, burns, and severe exposure could cause blindness.	



NRG Plant Header: 24" [600 psi]