



**Greg Dotson**  
 27710 ST RT 7  
 Marietta, OH 45750  
 Phone: (740) 868-1325

**ABOUT EUREKA MIDSTREAM**

Eureka Midstream is presently active in the most prolific unconventional shale resource plays in North America, namely the Marcellus Shale and Utica Shale. Eureka Midstream System has approximately 200 miles of pipeline and existing rights-of-way.

**PIPELINE SAFETY**

System failures occur infrequently along the nation’s network of interstate natural gas pipeline facilities, and many of these are caused by damage from others digging near the pipeline. We watch for unauthorized digging, but we request your help too.

We strongly encourage those who are going to dig to call their state One-Call Center or the 811 “Call before you dig” hotline to allow operators a chance to mark the underground facilities in the area before digging begins.



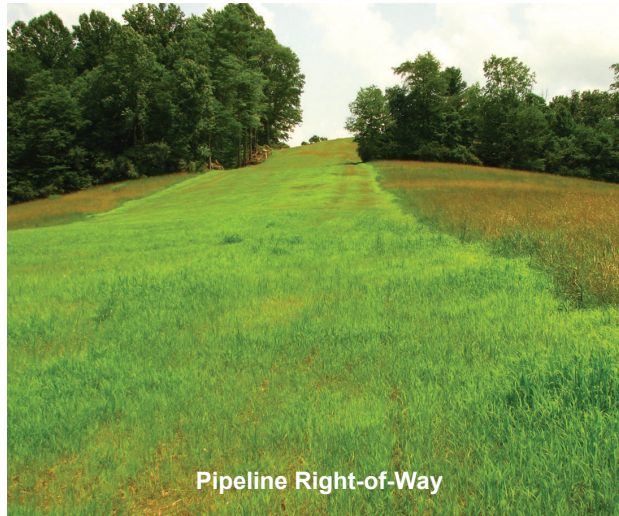
**WHAT SHOULD I DO IF I SUSPECT A PIPELINE LEAK?**

Your personal safety should be your first concern:

- Evacuate the area and prevent anyone from entering
- Abandon any equipment being used near the area
- Avoid any open flames
- Avoid introducing any sources of ignition to the area (such as cell phones, pagers, 2-way radios)
- Do not start/turn off motor vehicles/ electrical equipment
- Call 911 or contact local fire or law enforcement
- Notify the pipeline company
- Do not attempt to extinguish a natural gas fire
- Do not attempt to operate any pipeline valves

**WHAT ARE THE SIGNS OF A NATURAL GAS PIPELINE LEAK?**

- Blowing or hissing sound
- Dust blowing from a hole in the ground
- Continuous bubbling in wet or flooded areas
- Gaseous or hydrocarbon odor
- Dead or discolored vegetation in a green area
- Flames, if a leak has ignited



Pipeline Right-of-Way



Pipeline Marker

**EMERGENCY CONTACT:**  
 1-800-269-6673

**PRODUCTS/DOT GUIDEBOOK ID#/GUIDE#:**

Crude Oil	1267	128
Natural Gas	1971	115
Petro Distillates	1268	115

**WEST VIRGINIA COUNTIES OF OPERATION:**

Doddridge	Tyler
Pleasants	Wetzel
Ritchie	

*Changes may occur. Contact the operator to discuss their pipeline systems and areas of operation.*

**WHAT CONSTITUTES A GAS PIPELINE EMERGENCY?**

A gas pipeline emergency may be, but is not limited to one or more of the following situations:

- 1) Gas detected inside or near a building.
- 2) Fire located near or directly involving a pipeline facility.
- 3) Explosion occurring near or directly involving a pipeline facility.

- 4) Natural disaster such as flood, tornado, mine subsidence, etc.  
These are the type of emergencies of which police, fire, and emergency services may be notified.

## **PIPELINE LOCATION AND MARKERS**

Pipeline markers (see below) like these are used to indicate the approximate location of a natural gas pipeline and to provide contact information. Markers should never be removed or relocated by anyone other than a pipeline operator.

## **EMERGENCY RESPONSE PLANS**

Eureka Midstream has developed extensive response plans for its facilities based on the knowledge of its own personnel, available equipment, tools and materials. These plans are accessible at our facility. This document provides a general overview of Eureka Midstream's capabilities. For more detailed information or to review the Emergency Response Plan, please contact us directly. Eureka Midstream can provide assistance in planning your emergency procedures, recognizing that the primary authority lies with you, the local emergency response organization.

## **COMMUNICATING WITH EUREKA MIDSTREAM DURING AN EMERGENCY**

If a pipeline event occurs, emergency response officials will be notified and Eureka Midstream operations personnel will be dispatched to the site. Eureka Midstream personnel and/or contractors will be at the site as quickly as possible.

If you or another emergency response organization has set up an Incident Command Center prior to the arrival of Eureka Midstream personnel, the first Eureka Midstream employee to arrive at the site should be introduced to the incident commander as the Eureka Midstream representative

## **PUBLIC SAFETY AND EVACUATIONS**

Evacuation plans and procedures should reflect the available assets and capabilities of your own organization. Expert knowledge of your area is key to creating the best evacuation, traffic control and rerouting, and railroad stoppage plans in order to limit public exposure and minimize accidental ignition.

## **FIRE OR EXPLOSION**

Eureka Midstream does not have dedicated fire response personnel and must rely on the capabilities of local responders. Petroleum and natural gas emergencies present unique challenges for response personnel, so proper training is crucial. Contact your state fire marshal for pipeline emergency training. The U.S. Department of Transportation Emergency Response Guidebook provides information on potential hazards, public safety and emergency response.

## **RESCUE OR MEDICAL DUTIES**

Eureka Midstream employees are not trained to conduct rescue operations of any kind. Emergency response personnel will be contacted to assist with any needed rescue. Coordination will be made with emergency services or with a local hospital or medical provider in the event of a medical emergency.

## **PIPELINE EQUIPMENT AND FACILITIES**

Federal law requires specific training to operate pipeline equipment; therefore, Eureka Midstream employees will handle these duties. DO NOT attempt to operate any pipeline equipment, such as valves, in an emergency because doing so may worsen the situation.

## **BOMB OR SECURITY THREAT**

Eureka Midstream relies on the public to be its eyes and ears along the pipeline. If you witness any act of vandalism, loitering, receive a bomb threat involving a Eureka Midstream facility or other suspicious activities along the right of way or pipeline facility, please report it immediately to Eureka Midstream at 1-800-269-6673.

## **NATURAL DISASTERS**

When a natural disaster (hurricane, storm, flood, tornado, volcano or earthquake) strikes or is pending, the area will be monitored during the disaster. Pipeline facilities will be inspected after the disaster. Eureka Midstream station personnel may contact emergency officials to identify any road closures that may hamper access to the facility.

## **RIGHT OF WAY ACTIVITY**

One of the greatest threats to safe pipeline operation is the accidental damage caused by excavation, construction, farming activities, and homeowner construction and maintenance. Awareness is crucial in preventing these accidents. Call IMMEDIATELY if you see suspicious or questionable activity near the pipeline right of way. No one should conduct blasting, digging, ditching, drilling, leveling or plowing near the pipeline right of way without first contacting the state one call center.

## **CLOSURE**

The information above provides an outline of points to remember when dealing with a pipeline emergency. Remember, Eureka Midstream personnel are trained to deal with such emergencies. Without their input, the risk to those involved can be greatly increased. Therefore, contacting Eureka Midstream in the event of any pipeline emergency is critical.