



**ABOUT BLACK WARRIOR METHANE CORP.**

Black Warrior Methane Corp. (BWMC) is the producer and operator of over 400 active natural methane gas wells, and is affiliated with an underground coal mine. BWMC drills and operates wells located in Tuscaloosa and Jefferson Counties, then transports the produced gas through gathering and transmission pipelines to sales points connected with larger pipeline systems. BWMC operates over 200 miles of gathering lines and a transmission system with 33 miles of high-pressure pipeline. While not delivering gas directly to residential customers, BWMC facilities are located in or near the communities of Brookwood, Abernant, Yolande, Kellerman, Burchfield, Mud Creek, Ezra, and Oak Grove.

**WHAT DOES BWMC DO IF A LEAK OCCURS?**

To prepare for the event of a leak, pipeline companies regularly communicate, plan and train with local emergency responders. Upon the notification of an incident or leak the pipeline company will immediately dispatch trained personnel to assist emergency responders.

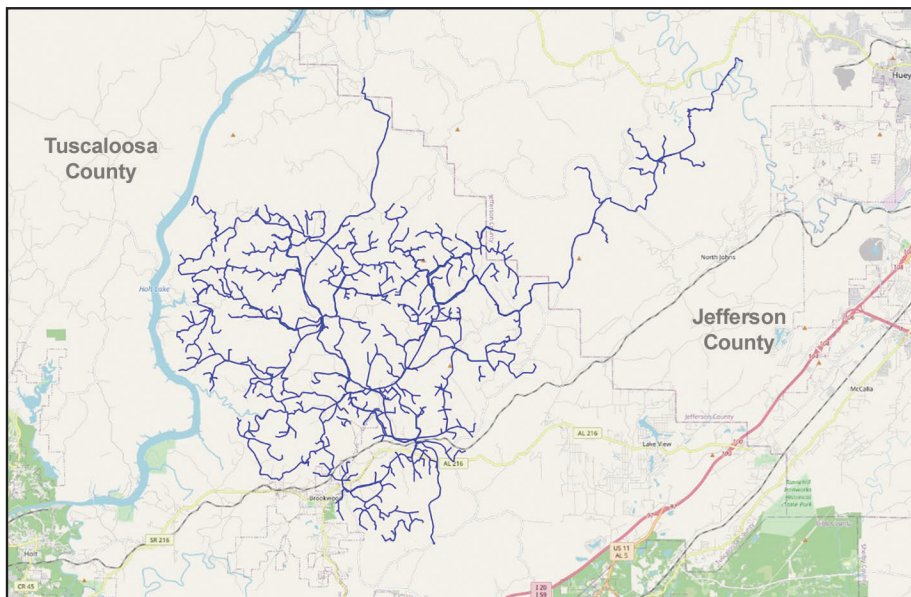
Pipeline operators and emergency responders are trained to protect life, property and facilities in the case of an emergency.

Pipeline operators will also take steps to minimize the amount of product that leaks out and to isolate the pipeline emergency.

**MAINTAINING SAFETY AND INTEGRITY OF PIPELINES**

BWMC invests significant time and capital maintaining the quality and integrity of their pipeline systems. BWMC also utilizes on-ground observers to identify potential dangers. Control center personnel continually monitor the pipeline system and assess changes in pressure and flow. They notify field personnel if there is a possibility of a leak. Automatic shut-off valves are sometimes utilized to isolate a leak.

Gas transmission and hazardous liquid pipeline operators have developed supplemental hazard and assessment programs known as Integrity Management Programs (IMPs). Specific information about BWMCs program may be provided by contacting us directly.



**EMERGENCY CONTACT:  
 1-205-554-6680**

<b>PRODUCTS/DOT GUIDEBOOK ID#/GUIDE#:</b>		
Methane Gas	1971	115

**ALABAMA  
 COUNTIES OF OPERATION:**

Jefferson                      Tuscaloosa

*Changes may occur. Contact the operator to discuss their pipeline systems and areas of operation.*

**PRODUCTS TRANSPORTED**

**Product:** Natural Methane Gas

**Leak Type:** Gas

**Vapors:** Initially heavier than air, spread along ground and may travel to source of ignition and flash back. Product is colorless, tasteless and odorless.

**Health Hazards:** Will be easily ignited by heat, sparks or flames and will form explosive mixtures with air. Vapors may cause dizziness or asphyxiation without warning and may be toxic if inhaled at high concentrations. Contact with gas or liquefied gas may cause burns, severe injury and/or frostbite. Fire may produce irritating and/or toxic gases.

**HOW TO GET ADDITIONAL INFORMATION**

For an overview of BWMC operations, go to [www.blackwarriormethane.com](http://www.blackwarriormethane.com) or contact us at 205-554-6680.

For additional information contact:

Joe Steele or  
 Jimmie Hyche  
 P. O. Box 140  
 17100 Methane Lane  
 Brookwood, Alabama 35444  
 Work Phone: 205-554-6270  
 Email: [jhyche@bwmcorp.com](mailto:jhyche@bwmcorp.com) or  
[jsteele@bwmcorp.com](mailto:jsteele@bwmcorp.com)

**ALABAMA ONE CALL: 811**