



West Escambia Utilities, Inc.
Atmore Alabama

107 E Ridgeley St.
Atmore, AL 36502
Phone: 251-368-2207
Website: www.weutilities.com

West Escambia Utilities, Inc. is a Natural Gas, Water and Sewer Distribution provider for Atmore, AL and surrounding areas. Our natural gas is supplied and odorized by Clarke-Mobile with a backup city-gate from Brewton. WEU supplies approximately 1700 gas customers and operates approximately 126 miles of distribution Natural Gas mains ranging from 3/4" to 6" of P/E and Coated & Wrapped Steel. Besides the Atmore area, we also serve the Poarch Creek Community, Wind Creek Casino and run north serving both Holman and Fountain Prisons. Our line to the north ends at Goodway Refinery.

If you observe any unusual or suspicious activity near our pipeline facilities or in the unlikely event an emergency occurs, please call us at any time using one of the numbers listed in this document.

WHAT ARE THE SIGNS OF A NATURAL GAS PIPELINE LEAK?

- Blowing or hissing sound
- Dust blowing from a hole in the ground
- Continuous bubbling in wet or flooded areas
- Gaseous or hydrocarbon odor
- Dead or discolored vegetation in a green area
- Flames, if a leak has ignited

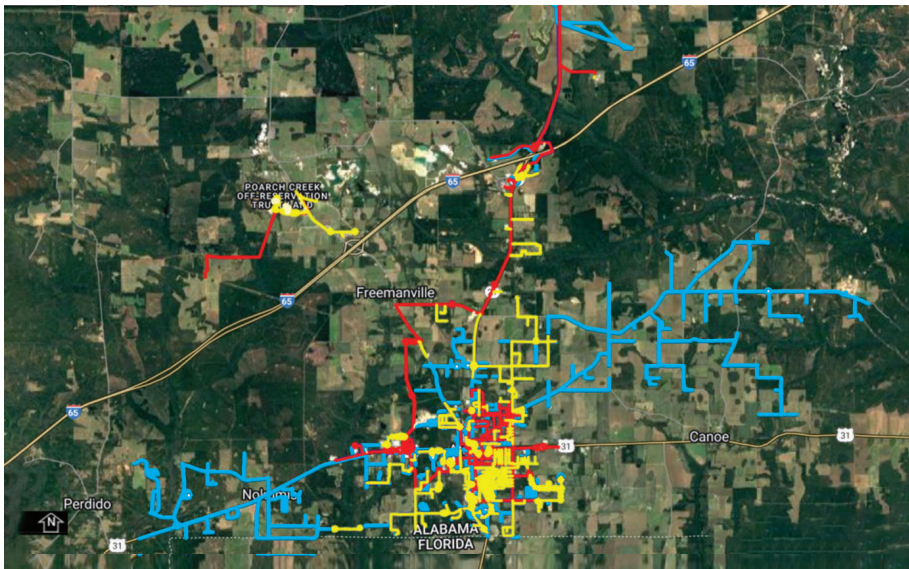
WHAT SHOULD I DO IF I SUSPECT A PIPELINE LEAK?

Your personal safety should be your first concern:

- Evacuate the area and prevent anyone from entering
- Abandon any equipment being used near the area
- Avoid any open flames
- Avoid introducing any sources of ignition to the area (such as cell phones, pagers, 2-way radios)
- Do not start/turn off motor vehicles/ electrical equipment
- Call 911 or contact local fire or law enforcement
- Notify the pipeline company
- Do not attempt to extinguish a natural gas fire
- Do not attempt to operate any pipeline valves

PIPELINE LOCATION AND MARKERS

Pipeline markers are used to indicate the approximate location of a natural gas pipeline and to provide contact information. Aerial patrol planes also use the markers to identify the pipeline route. Markers should never be removed or relocated by anyone other than a pipeline operator.



**EMERGENCY CONTACT:
251-368-9141**

PRODUCTS/DOT GUIDEBOOK ID#/GUIDE#:
Natural Gas 1971 115

**ALABAMA
COUNTIES OF OPERATION:**

Escambia

Changes may occur. Contact the operator to discuss their pipeline systems and areas of operation.

You can also find out where other companies' pipelines are in your area by going to the National Pipeline Mapping System website at www.npms.phmsa.dot.gov.



**I'm planning to dig.
How does 811 work?**



1. Call 811 or go online to submit your locate request at least two full working days prior to starting your project.
2. Wait two working days for all utilities to respond to your request.
3. Confirm that all utilities have responded.
4. Respect the utility marks or flags.
5. Dig carefully around buried utilities.



www.al811.com