



ABOUT CALIFORNIA RESOURCES CORPORATION

California Resources Corporation (NYSE: CRC) is a publicly traded oil and natural gas exploration and production company. CRC operates its world-class resource base exclusively within the State of California, applying integrated infrastructure to gather, process and market its production. The Company is the largest oil and natural gas producer in California on a gross-operating basis. Using advanced technology, CRC focuses on safely and responsibly supplying affordable energy for California by Californians.

ABOUT CALIFORNIA RESOURCES PRODUCTION CORPORATION

California Resources Production Corporation, a subsidiary of California Resources Corporation (CRC) and headquartered in Bakersfield, California, is an oil and natural gas producer that also operates oil and gas pipelines in order to bring these products to market. All CRC pipeline systems and facilities are located within the State of California.

WHAT DOES CALIFORNIA RESOURCES CORPORATION DO IF A LEAK OCCURS?

To prepare for the event of a leak, pipeline companies regularly communicate, plan and train with local emergency responders. Upon the notification of an incident or leak the pipeline company will immediately dispatch trained personnel to assist emergency responders. Pipeline operators and emergency responders are trained to protect life, property and the environment in the case of an emergency. Pipeline operators will also take steps to minimize the amount of product that leaks out and to isolate the pipeline emergency.

MAINTAINING SAFETY AND INTEGRITY OF PIPELINES

California Resources Corporation invests significant time and capital maintaining the quality and integrity of their pipeline systems. Hazard analysis and integrity tests are performed on a routine basis. Maintenance is performed on a routine basis to ensure the integrity of the line. Personnel and equipment monitor pipeline conditions 24 hours a day.

Both manual and automatic shut-off valves are utilized to isolate a leak. California Resources Corporation maintains an Integrity Management Program (IMP) that assesses pipelines and outlines the necessary maintenance and integrity preventative measures. Specific information about California Resources Corporation's program may be found by contacting us directly.

HOW TO GET ADDITIONAL INFORMATION

For more information about California Resources Corporation, contact us at 661-763-6363.

EMERGENCY CONTACT:
1-661-763-6363 or 1-661-763-6911

PRODUCTS/ DOT GUIDEBOOK ID#/ GUIDE#:
 Natural Gas 1971 115

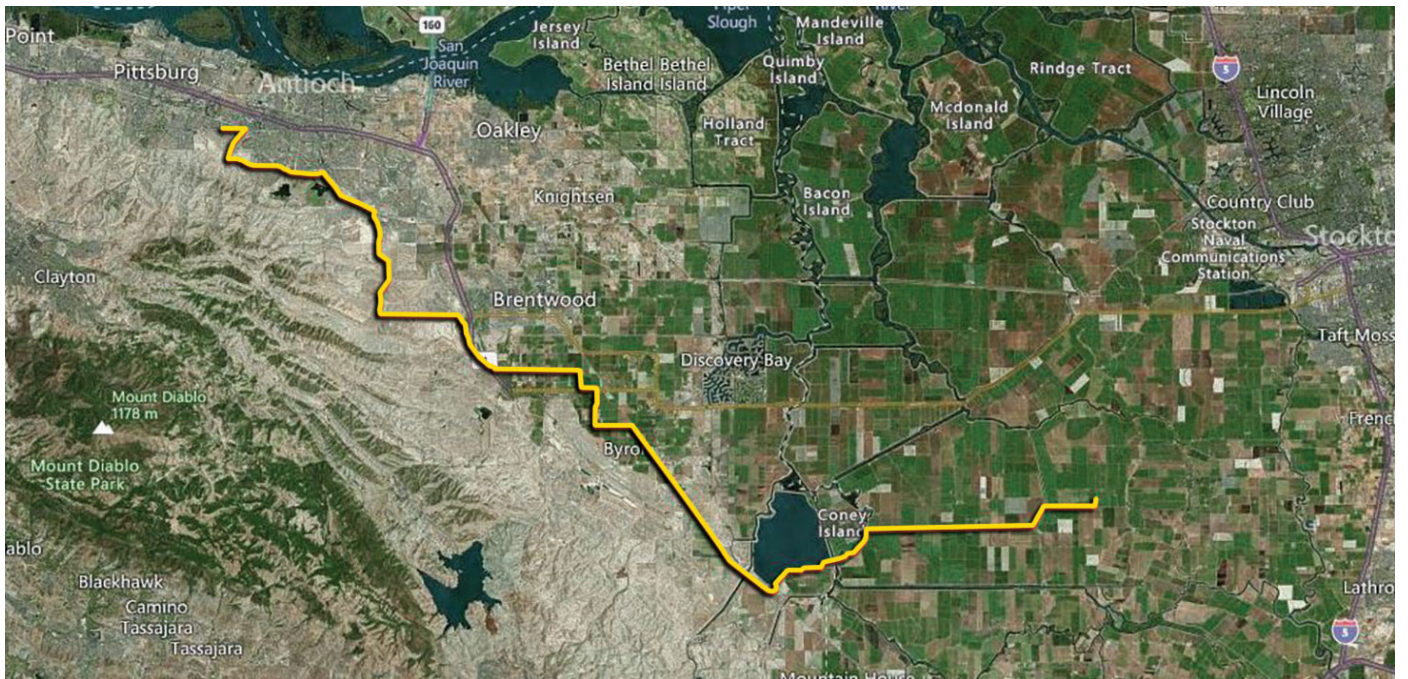
CALIFORNIA COUNTIES OF OPERATION:
 Contra Costa San Joaquin

Changes may occur. Contact the operator to discuss their pipeline systems and areas of operation.



PRODUCTS TRANSPORTED IN YOUR AREA

PRODUCT	LEAK TYPE	VAPORS
NATURAL GAS	Gas	Lighter than air and will generally rise and dissipate. May gather in a confined space and travel to a source of ignition.
HEALTH HAZARDS		Will be easily ignited by heat, sparks or flames and will form explosive mixtures with air. Vapors may cause dizziness or asphyxiation without warning and may be toxic if inhaled at high concentrations. Contact with gas or liquefied gas may cause burns, severe injury and/or frostbite.



Pipeline Diameter: 12"