

SoCal Holdings, LLC

ABOUT SOCIAL HOLDINGS, LLC

SoCal Holdings, LLC operates natural gas pipelines in the Huntington Beach area. All of these pipelines originate in gas production facilities owned and operated by SoCal Holdings, LLC (see map on following page).

WHAT DOES SOCIAL HOLDINGS, LLC DO IF A LEAK OCCURS?

To prepare for the event of a leak, pipeline companies regularly communicate, plan and train with local emergency responders. Upon the notification of an incident or leak the pipeline company will immediately dispatch trained personnel to assist emergency responders.

Pipeline operators and emergency responders are trained to protect life, property and the environment in the case of an emergency.

Pipeline operators will also take steps to minimize the amount of product that leaks out and to isolate the pipeline emergency.



MAINTAINING SAFETY AND INTEGRITY OF PIPELINES

SoCal Holdings, LLC invests significant time and capital maintaining the quality and integrity of their pipeline systems. Hazard analysis and integrity tests are performed on a routine basis. Maintenance is performed on a routine basis to ensure the integrity of the line. Personnel and equipment monitor pipeline conditions 24 hours a day.

Both manual and automatic shut-off valves are utilized to isolate a leak. SoCal Holdings, LLC maintains an Integrity Management Program (IMP) that assesses pipelines and outlines the necessary maintenance and integrity preventative measures. Specific information about SoCal Holdings, LLC's program may be found by contacting us directly.

EMERGENCY CONTACT: 1-562-624-3452

PRODUCTS/DOT GUIDEBOOK ID#/GUIDE#:		
Natural Gas	1971	115

CALIFORNIA COUNTIES OF OPERATION:

Orange

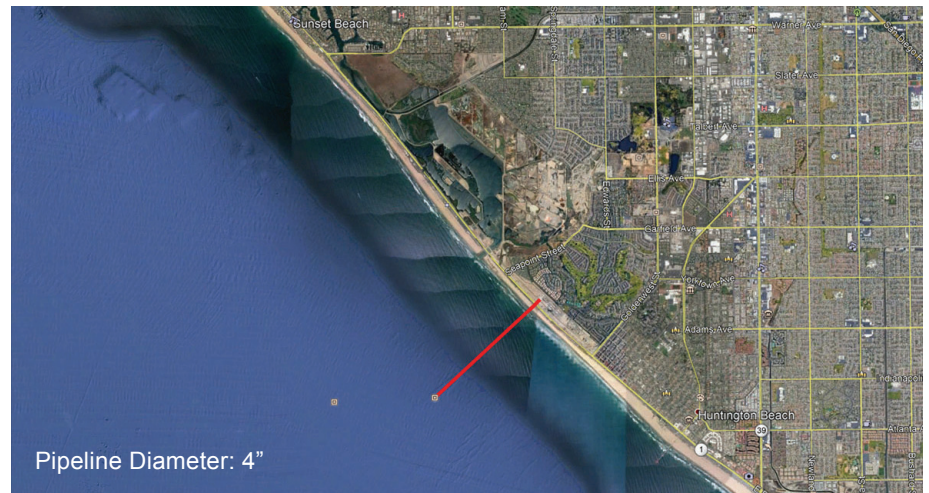
Changes may occur. Contact the operator to discuss their pipeline systems and areas of operation.

HOW TO GET ADDITIONAL INFORMATION

For more information about SoCal Holdings, LLC, contact us at 562-624-3452.

PRODUCTS TRANSPORTED IN YOUR AREA

PRODUCT	LEAK TYPE	VAPORS
NATURAL GAS	Gas	Lighter than air and will generally rise and dissipate. May gather in a confined space and travel to a source of ignition.
HEALTH HAZARDS	Will be easily ignited by heat, sparks or flames and will form explosive mixtures with air. Vapors may cause dizziness or asphyxiation without warning and may be toxic if inhaled at high concentrations. Contact with gas or liquefied gas may cause burns, severe injury and/or frostbite.	



Pipeline Diameter: 4"