



ABOUT THUMS

THUMS operations and pipelines are based in Long Beach. THUMS operates the Long Beach Unit of the Wilmington Field for the City of Long Beach and the State of California. The LBU is comprised of four man-made islands in Long Beach Harbor, as well as onshore facilities.

THUMS operates pipelines that transport natural gas and crude oil that is then sold to various utilities and refineries. These pipelines undergo routine maintenance and inspection to maintain the mechanical integrity of the pipeline systems.

THUMS' unique combination of production functionality, visual appeal and environmental and safety features has garnered the facility dozens of awards and recognition from local, state and national organizations.

WHAT DOES THUMS DO IF A LEAK OCCURS?

To prepare for the event of a leak, pipeline companies regularly communicate, plan and train with local emergency responders. Upon the notification of an incident or leak the pipeline company will immediately dispatch trained personnel to assist emergency responders.

Pipeline operators and emergency responders are trained to protect life, property and the environment in the case of an emergency.

Pipeline operators will also take steps to minimize the amount of product that leaks out and to isolate the pipeline emergency.

MAINTAINING SAFETY AND INTEGRITY OF PIPELINES

THUMS invests significant time and capital maintaining the quality and integrity of their pipeline systems. Hazard analysis and integrity tests are performed on a routine basis. Maintenance is performed on a routine basis to ensure the integrity of the line. Personnel and equipment monitor pipeline conditions 24 hours a day.

Both manual and automatic shut-off valves are utilized to isolate a leak. THUMS maintains an Integrity Management Program (IMP) that assesses pipelines and outlines the necessary maintenance and integrity preventative measures. Specific information about THUMS' program may be found by contacting us directly.

HOW TO GET ADDITIONAL INFORMATION

For information about the mechanical integrity program, please contact our dispatcher at 562-624-3452.

EMERGENCY CONTACT:
1-562-624-3452

PRODUCTS / DOT GUIDEBOOK ID# / GUIDE#:		
Crude Oil	1267	128
Natural Gas	1971	115

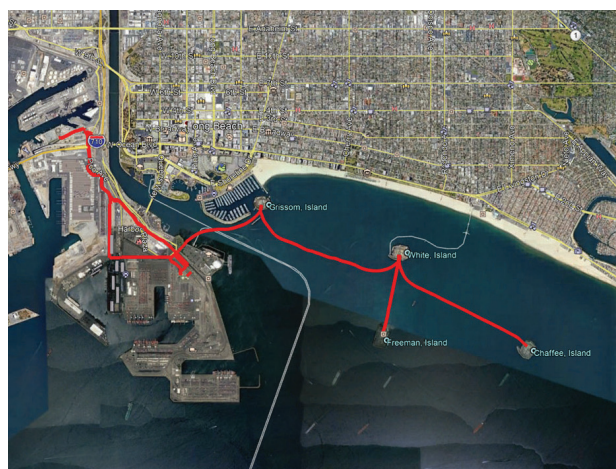
CALIFORNIA COUNTIES OF OPERATION:

Los Angeles

Changes may occur. Contact the operator to discuss their pipeline systems and areas of operation.

PRODUCTS TRANSPORTED IN YOUR AREA

PRODUCT	LEAK TYPE	VAPORS
HAZARDOUS LIQUIDS [SUCH AS: CRUDE OIL, DIESEL FUEL, JET FUEL, GASOLINE, AND OTHER REFINED PRODUCTS]	Liquid	Initially heavier than air and spread along ground and collect in low or confined areas. Vapors may travel to source of ignition and flash back. Explosion hazards indoors, outdoors or in sewers.
HEALTH HAZARDS	Inhalation or contact with material may irritate or burn skin and eyes. Fire may produce irritating, corrosive and/or toxic gases. Vapors may cause dizziness or suffocation. Runoff from fire control or dilution water may cause pollution.	
NATURAL GAS	Gas	Lighter than air and will generally rise and dissipate. May gather in a confined space and travel to a source of ignition.
HEALTH HAZARDS	Will be easily ignited by heat, sparks or flames and will form explosive mixtures with air. Vapors may cause dizziness or asphyxiation without warning and may be toxic if inhaled at high concentrations. Contact with gas or liquefied gas may cause burns, severe injury and/or frostbite.	



Pipeline Diameter: 2" - 24"