



ABOUT CURETON FRONT RANGE LLC

Cureton Front Range LLC (Cureton) is headquartered in Denver, CO, USA, is a natural gas gathering and transmission system spanning over a 120 miles in Weld County, CO.

Cureton Front Range LLC's 30 employees and its pipeline system and facilities are located throughout Weld County, CO, USA.

WHAT DOES CURETON FRONT RANGE LLC DO IF A LEAK OCCURS?

To prepare for the event of a leak, pipeline companies regularly communicate, plan and train with local emergency responders. Upon the notification of an incident or leak the pipeline company will immediately dispatch trained personnel to assist emergency responders.

Pipeline operators and emergency responders are trained to protect life, property and facilities in the case of an emergency.

Pipeline operators will also take steps to minimize the amount of product that leaks out and to isolate the pipeline emergency.

MAINTAINING SAFETY AND INTEGRITY OF PIPELINES

Cureton Front Range LLC invests significant time and capital maintaining the quality and integrity of their pipeline systems. Most active pipelines are monitored 24 hours a day via manned control centers. Cureton Front Range LLC also utilizes aerial surveillance and/or on-ground observers to identify

potential dangers. Control center personnel continually monitor the pipeline system and assess changes in pressure and flow. They notify field personnel if there is a possibility of a leak. Automatic shut-off valves are sometimes utilized to isolate a leak.

Gas transmission and hazardous liquid pipeline operators have developed supplemental hazard and assessment programs known as Integrity Management Programs (IMPs). Specific information about Cureton Front Range LLC's program may be found on our Web site, or by contacting us directly.

**EMERGENCY CONTACT:
888-879-8626**

PRODUCTS/DOT GUIDEBOOK ID#/GUIDE#:		
Natural Gas	1971	115
Natural Gas Liquids	1971	115

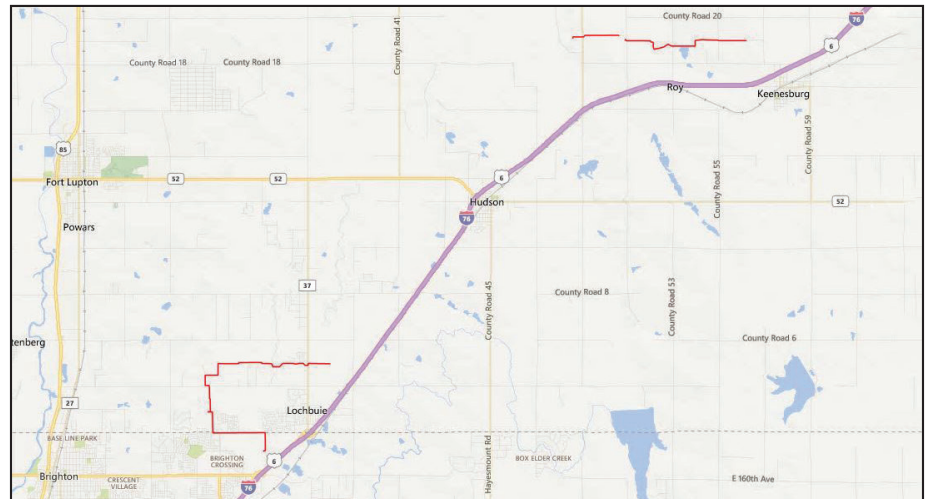
**COLORADO
COUNTIES OF OPERATION:**

Weld

Changes may occur. Contact the operator to discuss their pipeline systems and areas of operation.

HOW TO GET ADDITIONAL INFORMATION

For an overview of Cureton's operations and safety go to www.curetonmidstream.com or contact us at (833) 287-3866.



PRODUCTS TRANSPORTED IN YOUR AREA

PRODUCT	LEAK TYPE	VAPORS
Highly Volatile Liquids [such as: butane, propane, ethane, propylene, and natural gas liquids (NGL)]	Gas	Initially heavier than air, spread along ground and may travel to source of ignition and flash back. Product is colorless, tasteless and odorless.
HEALTH HAZARDS	Will be easily ignited by heat, sparks or flames and will form explosive mixtures with air. Vapors may cause dizziness or asphyxiation without warning and may be toxic if inhaled at high concentrations. Contact with gas or liquefied gas may cause burns, severe injury and/or frostbite. Fire may produce irritating and/or toxic gases.	
Natural Gas	Gas	Lighter than air and will generally rise and dissipate. May gather in a confined space and travel to a source of ignition.
HEALTH HAZARDS	Will be easily ignited by heat, sparks or flames and will form explosive mixtures with air. Vapors may cause dizziness or asphyxiation without warning and may be toxic if inhaled at high concentrations. Contact with gas or liquefied gas may cause burns, severe injury and/or frostbite.	

