



46355 CR 95
 Briggsdale, CO 80611
 Phone: (303) 907-1484
 Email: dbrazeal@taprootep.com
 Website: www.taprootep.com

WHO IS TAPROOT ROCKIES MIDSTREAM LLC?

We operate about 43 miles of crude oil gathering pipelines and 41 miles of produced water gathering pipelines in Weld County Colorado.

If you observe any unusual or suspicious activity near our pipeline facilities or in the unlikely event an emergency occurs, please call us at any time using one of the numbers listed in this document.

More information on Taproot Rockies Midstream LLC can be found at: www.taprootep.com.

WHAT ARE THE SIGNS OF A CRUDE OIL OR PRODUCED WATER PIPELINE LEAK?

- Pooling liquid on the ground near a pipeline
- Liquids bubbling up from the ground
- Petroleum odor
- Dead or discolored vegetation in an otherwise green area
- Oil slick or sheen on water
- Flames, if a leak has ignited

WHAT SHOULD I DO IF I SUSPECT A PIPELINE LEAK?

Your personal safety should be your first concern:

- Evacuate the area and prevent anyone from entering
- Abandon any equipment being used near the area
- Avoid any open flames
- Avoid introducing any sources of ignition to the area (such as cell phones, pagers, 2-way radios)
- Do not start/turn off motor vehicles/ electrical equipment
- Call 911 or contact local fire or law enforcement
- Notify the pipeline company
- Do not attempt to extinguish a natural gas fire
- Do not attempt to operate any pipeline valves

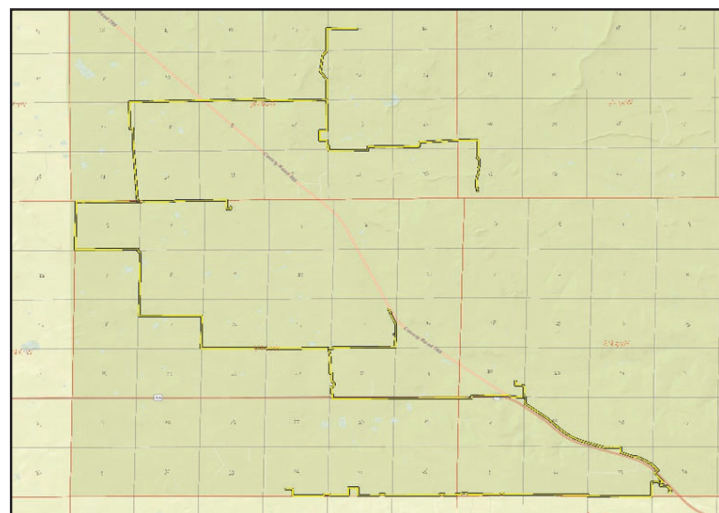
PIPELINE SAFETY

System failures occur infrequently along the nation's network of liquid pipeline facilities, and many of these are caused by damage from others digging near the pipeline. We watch for unauthorized digging, but we request your help to notify us.

ALWAYS CALL 811 BEFORE YOU DIG!

PIPELINE LOCATION AND MARKERS

Pipeline markers are used to indicate the approximate location of a natural gas pipeline and to provide contact



Pipeline Diameter: 4"-10"

EMERGENCY CONTACT:

1-800-919-9477

PRODUCTS/DOT GUIDEBOOK ID#/GUIDE#:

Crude Oil	1267	128
Produced Water	N/A	N/A

COLORADO COUNTIES OF OPERATION:

Weld

Changes may occur. Contact the operator to discuss their pipeline systems and areas of operation.

information. Aerial patrol planes also use the markers to identify the pipeline route. Markers should never be removed or relocated by anyone other than a pipeline operator.

You can also find out where other companies' pipelines are in your area by going to the National Pipeline Mapping System website at www.npms.phmsa.dot.gov.



EMERGENCY RESPONSE PLANS

An Emergency Response Plan is developed for each pipeline facility to contain, control, and mitigate the various types of emergency conditions/ situations that could occur at one of our facilities. For more information regarding Taproot emergency response plans and procedures, contact us at dbrazeal@taprootep.com.