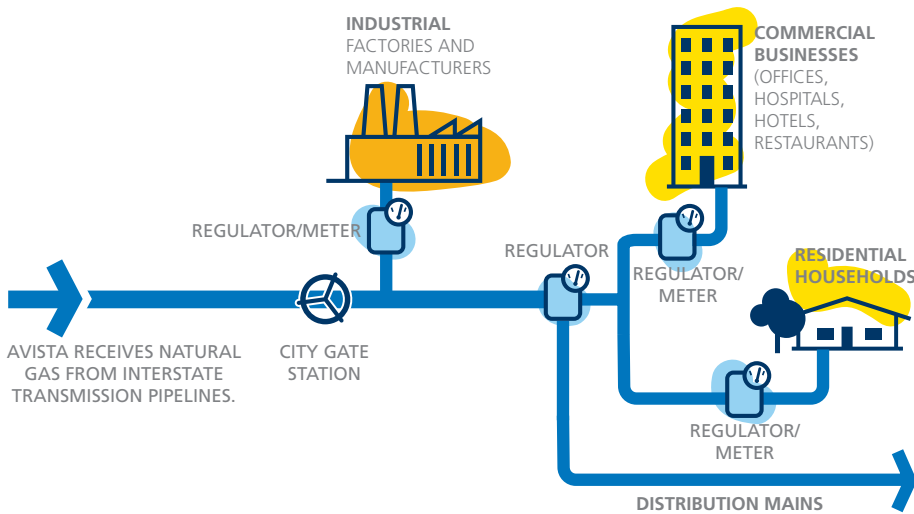




Salina Simpson
 PO Box 3727
 Spokane, WA 99220
 Phone: (509) 495-7851
 Website: www.myavista.com

IMPORTANT INFORMATION ABOUT NATURAL GAS PIPELINES IN YOUR COMMUNITY

Avista works closely with fire, police and public officials to ensure public safety around our natural gas pipelines. You are receiving this information because either you have Avista facilities in your area, your employees traverse our service area, or you provide mutual aid in natural gas emergencies.



AVISTA'S NATURAL GAS PIPELINE SYSTEM

Natural gas pipelines play a vital role in our daily lives. The heating of homes and businesses, cooking and cleaning, and hot water heating are all made possible by safe and reliable natural gas delivered through pipelines.

Avista transports natural gas through pipelines in your community. For areas along our pipelines where the consequences of an accident would be greatest, we have developed Integrity Management Plans to assess potential hazards and to manage the safety of our pipelines.

For more information on Avista's Natural Gas Integrity Management Plans, call (800) 227-9187.

IDENTIFYING PIPELINE MARKERS

Avista posts brightly colored markers along our right-of-way to identify the presence of—but not necessarily the exact location of—our buried natural gas pipelines. A 24-hour emergency phone number is posted on each marker.

Not all of Avista's underground pipelines have markers, however. These include the main lines and service lines of our distribution system.



EMERGENCY CONTACT:
1-800-227-9187

PRODUCTS/DOT GUIDEBOOK ID#/GUIDE#:		
Natural Gas	1971	115
Mercaptan	3336	130

IDAHO
COUNTIES OF OPERATION:

Bonner	Latah
Boundary	Nez Perce
Kootenai	Shoshone

OREGON
COUNTIES OF OPERATION:

Douglas	Klamath
Jackson	Union
Josephine	

WASHINGTON
COUNTIES OF OPERATION:

Adams	Lincoln
Asotin	Skamania
Franklin	Spokane
Grant	Stevens
Klickitat	Whitman

Changes may occur. Contact the operator to discuss their pipeline systems and areas of operation.

Main lines are generally installed in utility easements alongside streets and highways. Service lines run from the distribution main line into homes and businesses.

LOCATION OF PIPELINES IN YOUR RESPONSE AREA

Your department can access critical pipeline maps by registering with the National Pipeline Mapping System (NPMS) at www.npms.phmsa.dot.gov. NPMS will provide a list of transmission pipelines by county or zip code, including the contact information of pipeline operators.

WHAT TO DO IN A NATURAL GAS EMERGENCY

- If necessary, turn off the gas valve at the meter or appliance. Once it is off, leave it off.
- Do not turn off a valve at the main or regulator station, even in an emergency. Doing so could cause public safety issues elsewhere.
- Coordinate with gas crews and other fire/police at the scene.

WHAT TO DO IN A STRUCTURE FIRE

- If you think the structure has natural gas service, contact Avista immediately at (800) 227-9187. We need to be alerted to the possibility of unseen damage to our facilities that could pose a danger to you.
- Never remove the natural gas meter, regulator or other facilities.

IMPORTANT TO KNOW ABOUT CARBON MONOXIDE

Carbon monoxide (CO) is a colorless, odorless gas that is toxic to human. Early signs of CO poisoning include pink skin, cherry red mucous membranes, dizziness, fatigue, nausea, mental confusion and heart palpitations.

If a CO detector has sounded an alarm, or you suspect a natural gas appliance is functioning improperly and producing CO, immediately get everyone outside to fresh air and call 911 and then Avista at (800) 227-9187. Give us your location and explain the situation so we can help.

DISASTER PREPAREDNESS

In the event of a major emergency, Avista will implement its Emergency Operations Plan to deal with the emergency in an efficient manner. It is possible to review the plan at Avista's local offices.

CALL 811 BEFORE YOU DIG

If a public works project includes any type of excavating (such as installing water lines with a backhoe or planting trees with a hand shovel), your department or agency is required by law to call 811 or visit call811.com at least two business days before you dig. Calling lets someone locate and mark potentially hazardous underground utility lines ahead of time so that your crews stay safe and do not damage or accidentally build overtop of Avista's utility infrastructure.



Salina Simpson
 PO Box 3727
 Spokane, WA 99220
 (509) 495-7851
PublicSafety@avistacorp.com
myavista.com

For additional information

800-227-9187
avistautilities.com/safety
publicsafety@avistacorp.com

Если Вы хотели бы получить информацию о правилах безопасности на русском языке, пожалуйста звоните по телефону 800-227-9187.

Si desea recibir información en Español acerca de la seguridad, por favor llamar a: 800-227-9187

For assistance with alternative languages please call 800-227-9187.

SIGNS OF A NATURAL GAS LEAK

- Smell** We add a sulfur-like rotten egg stench so you'll know right away if there is a problem.
- Hear** Gas can hiss or even roar as it escapes pipes.
- See** Gas may make bubbles, blow dirt and kill plants when leaking from underground pipes.

STEPS TO FOLLOW IF YOU NOTICE A NATURAL GAS LEAK

- Do NOT smoke, light flares, turn electrical switches on or off, use a telephone or cell phone, or take any other action that might create a spark.
- Evacuate everyone from the building or area.
- Call 911 and Avista at 800-227-9187 from a safe, neighboring place.
- Do not go back until Avista says it is safe.

**EMERGENCY CONTACT
(800) 227-9187**

Avista Utilities
 1411 East Mission MSC 20
 Spokane, WA 99220-3727