



ABOUT BRADKEN ATCHISON

Bradken Engineered Products owns a 2 mile transmission pipeline that supplies the steel plant with natural gas. It starts on Sheldon Ln., passes through Jackson Park, and enters the South side of the plant.

WHAT DOES BRADKEN ATCHISON DO IF A LEAK OCCURS?

To prepare for the event of a leak, pipeline companies regularly communicate, plan and train with local emergency responders. Upon the notification of an incident or leak the pipeline company will immediately dispatch trained personnel to assist emergency responders.

Pipeline operators and emergency responders are trained to protect life, property and facilities in the case of an emergency.

Pipeline operators will also take steps to minimize the amount of product that leaks out and to isolate the pipeline emergency.

MAINTAINING SAFETY AND INTEGRITY OF PIPELINES

Bradken Atchison invests significant time and capital maintaining the quality and integrity of their pipeline systems.

Most active pipelines are monitored 24 hours a day via manned control centers. Bradken Atchison also utilizes aerial surveillance and/or on-ground observers to identify potential dangers. Control center personnel continually monitor the pipeline system and assess changes in pressure and flow. They notify field personnel if there is a possibility of a leak. Automatic shut-off valves are sometimes utilized to isolate a leak.

Gas transmission and hazardous liquid pipeline operators have developed supplemental hazard and assessment programs known as Integrity Management Programs (IMPs). Specific information about Bradken Atchison’s program may be found on our Web site, or by contacting us directly.

PRODUCTS TRANSPORTED IN YOUR AREA

Product: Natural Gas

Leak Type: Gas

Vapors: Lighter than air and will generally rise and dissipate. May gather in a confined space and travel to a source of ignition.

Health Hazards: Will be easily ignited by heat, sparks or flames and will form explosive mixtures with air. Vapors may cause dizziness or asphyxiation without warning and may be toxic if inhaled at high concentrations. Contact with gas or liquefied gas may cause burns, severe injury and/or frostbite.

24-Hour Emergency Contact:
911

PRODUCTS/ DOT GUIDEBOOK ID#/ GUIDE#:		
Natural Gas	1971	115

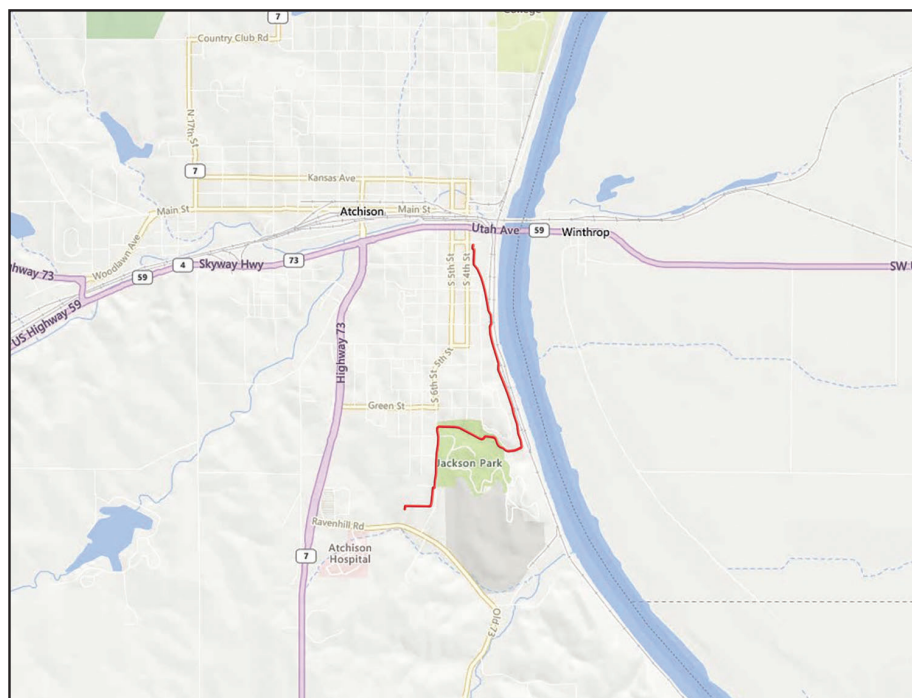
KANSAS
COUNTIES OF OPERATION:

Atchison

Changes may occur. Contact the operator to discuss their pipeline systems and areas of operation.

HOW TO GET ADDITIONAL INFORMATION

For an overview of Bradken Atchison’s 913-367-2121, Ext. 543.



Base map courtesy of openstreetmap.org