



**ABOUT CARDINAL GLASS INDUSTRIES**

Cardinal Glass Industries owns a natural gas transmission pipeline that supplies the Cardinal Glass plant with natural gas.

**WHAT DOES CARDINAL GLASS INDUSTRIES DO IF A LEAK OCCURS?**

To prepare for the event of a leak, pipeline companies regularly communicate, plan and train with local emergency responders. Upon the notification of an incident or leak the pipeline company will immediately dispatch trained personnel to assist emergency responders.

Pipeline operators and emergency responders are trained to protect life, property and facilities in the case of an emergency.

Pipeline operators will also take steps to minimize the amount of product that leaks out and to isolate the pipeline emergency.

**MAINTAINING SAFETY AND INTEGRITY OF PIPELINES**

Cardinal Glass Industries invests significant time and capital maintaining the quality and integrity of their pipeline systems.

Most active pipelines are monitored 24 hours a day via manned control centers. Cardinal Glass Industries also utilizes aerial surveillance and/or on-ground observers to identify potential dangers. Control center personnel continually monitor the pipeline system and assess changes in pressure and flow. They notify field personnel if there is a possibility of a leak. Automatic shut-off valves are sometimes utilized to isolate a leak.

Gas transmission and hazardous liquid pipeline operators have developed supplemental hazard and assessment programs known as Integrity Management Programs (IMPs). Specific information about Cardinal Glass Industries' program may be found on our Web site, or by contacting us directly.

**PRODUCTS TRANSPORTED IN YOUR AREA**

**Product:** Natural Gas

**Leak Type:** Gas

**Vapors:** Lighter than air and will generally rise and dissipate. May gather in a confined space and travel to a source of ignition.

**Health Hazards:** Will be easily ignited by heat, sparks or flames and will form explosive mixtures with air. Vapors may cause dizziness or asphyxiation without warning and may be toxic if inhaled at high concentrations. Contact with gas or liquefied gas may cause burns, severe injury and/or frostbite.

**24-Hour Emergency Contact:**  
**1-913-592-6100**

<b>PRODUCTS/ DOT GUIDEBOOK ID#/ GUIDE#:</b>		
Natural Gas	1971	115

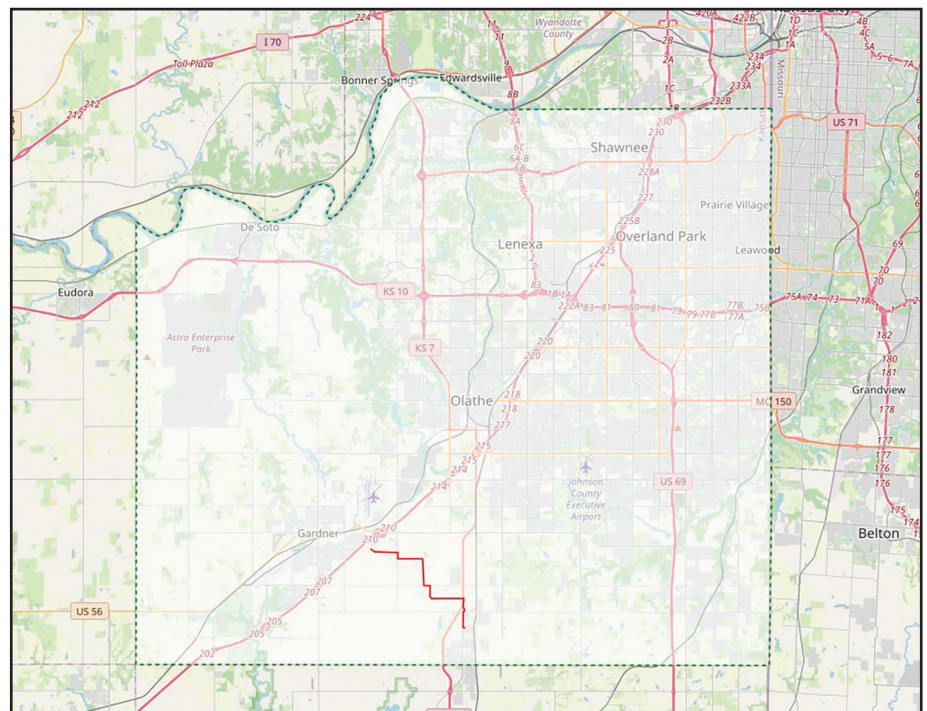
**KANSAS**  
**COUNTIES OF OPERATION:**

Johnson

*Changes may occur. Contact the operator to discuss their pipeline systems and areas of operation.*

**HOW TO GET ADDITIONAL INFORMATION**

For an overview of Cardinal Glass Industries IMP, call us at 913-592-6100.



Base map courtesy of [openstreetmap.org](http://openstreetmap.org)