

GLE

MANAGEMENT SERVICES

A NOTE FROM GLE MANAGEMENT SERVICES

GLE Management Services owns and operates regulated natural gas transmission pipelines in Kentucky. You are receiving this message because we have identified you as a resident or business, excavator, public official, or emergency official in the vicinity or jurisdiction of the pipeline system. While it is unlikely a gas leak will occur, you should always be prepared. This communication was designed to provide you with safety information about natural gas pipelines. Please take time to review it.

ABOUT OUR PRODUCT

Natural Gas is lighter than air and will generally rise and dissipate. It may gather in a confined space and travel to a source of ignition. Natural gas will be easily ignited by heat, sparks or flames and will form explosive mixtures with air. Vapors may cause dizziness or asphyxiation without warning and may be toxic if inhaled at high concentrations. Contact with gas or liquefied gas may cause burns, severe injury and/or frostbite.

DAMAGE PREVENTION

Most pipeline accidents occur when individuals are not aware of a pipeline's location before they begin excavation. You can help prevent pipeline incidents by calling 811 or visiting <https://kentucky811.org/> at least 3 working days before digging to submit a free locate request. A simple online submission or one easy phone call to 811 gets the approximate location of underground utility lines marked at no cost to you. For more information please visit: <https://kentucky811.org/>.



PIPELINE LOCATION INFORMATION

Pipeline markers are located in pipeline rights-of-way (a corridor wide enough to allow for maintenance and repair). These markers indicate the approximate location of the pipeline but not the depth of the pipeline. On pipeline markers you will find the operators name, emergency phone number and the product being transported in the pipeline. It is a federal crime to deface, damage, remove, or destroy a pipeline marker.

If you encounter a line while digging which may be ours, or see anything unusual or suspicious on our right-of-way, please contact us immediately at **1-888-853-4799**. Even if there is no apparent damage to the line, we need to inspect it for public safety purposes.



LEAK RECOGNITION AND RESPONSE

Possible signs of a leak

- Smell of gas
- Bubbling, hissing, or roaring sound
- Blowing dust
- Visible fire/explosion
- Ground frost during warm weather
- Discolored soil
- Dead vegetation

EMERGENCY CONTACT:

1-888-853-4799

PRODUCTS/DOT GUIDEBOOK ID#/GUIDE#:

| | | |
|-------------|------|-----|
| Natural Gas | 1971 | 115 |
|-------------|------|-----|

KENTUCKY COUNTIES OF OPERATION:

Meade

Changes may occur. Contact the operator to discuss their pipeline systems and areas of operation.

Response to a leak

- Leave the leak area immediately.
- Do not touch, breathe, or come in contact with the product.
- Do not light a match, start an engine, use a telephone, switch on/off light switches or do anything that may cause a spark in the area or vicinity of the leak.
- From a safe location immediately call 911 and GLE Management Services at **1-888-853-4799** and report exactly what you have seen, heard, or smelled and where this incident or event took place.
- Warn others but do so without entering or re-entering the area where a pipeline leak is suspected.
- Do not drive any vehicle into a leak or vapor cloud area.

PREVENTION MEASURES UNDERTAKEN

Pipelines and facilities provide support for two-thirds of the energy we use each year. The U.S. Department of Transportation states that pipelines are the safest mode of transportation for natural gas and petroleum products. Although it is unlikely an incident will occur, GLE Management Services maintains ongoing public awareness and damage prevention programs to promote awareness of pipeline safety and damage prevention.

In addition, all active pipelines are monitored 24 hours a day via staffed control centers. GLE Management Services also utilizes aerial surveillance and/or on-ground observers to identify potential dangers. Control center personnel continually monitor the pipeline system and assess changes in pressure and flow. They notify field personnel if there is a possibility of a leak. Automatic shut-off valves are sometimes utilized to isolate a leak.

EMERGENCY PREPAREDNESS

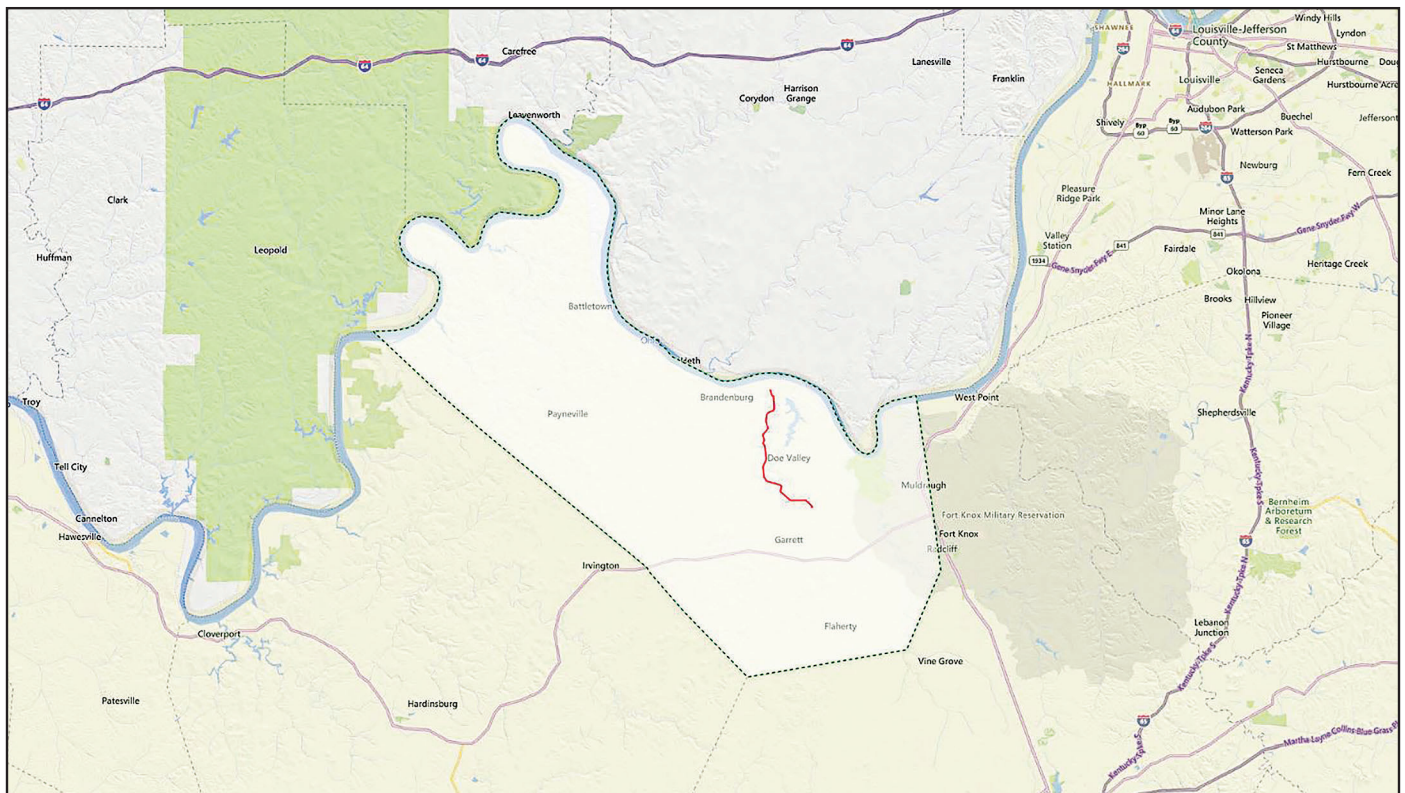
To prepare for the event of a leak, GLE Management Services regularly communicates, plans, and trains with

local emergency responders. Upon the notification of an incident or leak the company will immediately dispatch trained personnel to assist emergency responders. GLE Management Services personnel and emergency responders are trained to protect life, property, and facilities in the case of an emergency. The company will also take steps to minimize the amount of product that leaks out and to isolate the pipeline emergency. If you are an agency that would like more information or to get a copy of the company's Emergency Response Plan, please call **304-941-9006**.

CONTACT INFORMATION

If you have additional questions or comments on public safety or GLE Management Services please contact us at **304-925-6100** or visit our website at <https://www.greylockmidstream.com/>. Thank you for reading and keeping this information for future reference.

Sincerely,
Kyle Flanagan



Base map courtesy of openstreetmap.org