



ABOUT EMPIRE MIDSTREAM LLC

Empire Midstream LLC (Empire), headquartered in New Orleans, LA, USA, is a crude oil pipeline and bulk terminal operator with gathering systems spanning over 107 miles in southeast Louisiana and the Gulf of Mexico OCS federal waters.

WHAT DOES EMPIRE MIDSTREAM LLC DO IF A RELEASE OCCURS?

To prepare for the event of a release, Empire regularly communicates, plans and trains with federal, state and local emergency responders. Upon notification of an incident, Empire will immediately shut down the pipeline or facility to minimize the amount of product released. Empire will also initiate its Spill Management Team/Facility Response Plan/Oil Spill Response Plan, notify governmental authorities, and dispatch trained personnel and equipment to assist emergency responders.

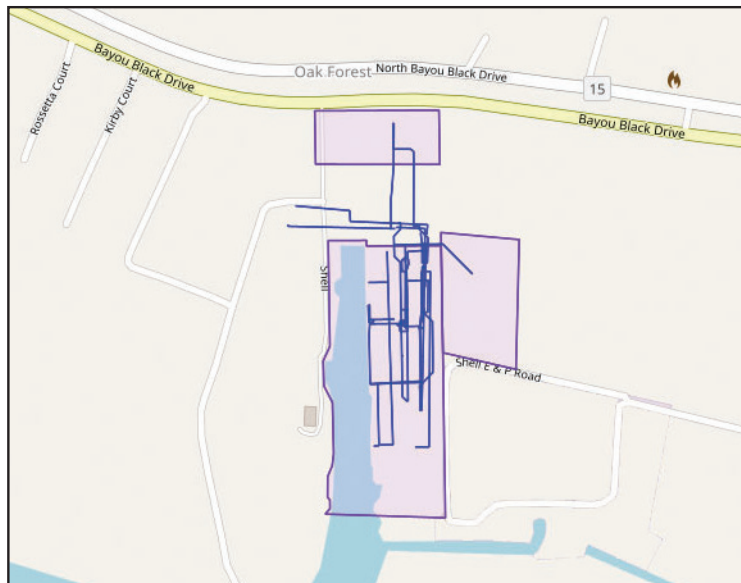
Pipeline and terminal operators such as Empire and emergency responders are trained to protect life, property and facilities in the case of an emergency. The safety of the public, company personnel, the environment, and property are their highest priority.

MAINTAINING SAFETY AND INTEGRITY OF PIPELINES

Empire invests significant time maintaining the quality and integrity of their pipeline systems and facilities. Most active pipelines are monitored via SCADA remote monitoring. Empire also utilizes aerial surveillance and/or on-ground observers to identify potential dangers. Pipeline technicians monitor the pipeline system and facilities and assess changes in pressure and flow. They notify field personnel if there is a possibility of a leak. Automatic shut-off valves are sometimes utilized to isolate a leak.

DAMAGE PREVENTION EQUALS CALL "BEFORE YOU DIG"

*At least two full working days prior to starting projects involving any type of ground disturbance, The Louisiana Underground Utilities and Facilities Damage Prevention Law requires **the public** to contact our regional notification center, **LA One Call by dialing 811 or 1-800-272-3020**. LA One Call will notify nearby pipeline and utility companies of the location of your project free of charge. Pipeline and utility companies with underground utilities near your project will locate and*



EMERGENCY CONTACT: 1-844-252-9894

PRODUCTS/DOT GUIDEBOOK ID#/GUIDE#:
Crude Oil 1267 128

LOUISIANA PARISHES OF OPERATION:

Terrebonne

Changes may occur. Contact the operator to discuss their pipeline systems and areas of operation.

mark the area to prevent accidents and damage to you and your property during your project.



PRODUCTS TRANSPORTED

Product: Crude Oil

Leak Type: Liquid

Vapors: Initially heavier than air and spread along ground and collect in low or confined areas. Vapors may travel to source of ignition and flash back. Explosion hazards indoors, outdoors or in sewers.

Health Hazards: Inhalation or contact with material may irritate or burn skin and eyes. Fire may produce irritating, corrosive and/or toxic gases. Vapors may cause dizziness or suffocation. Runoff from fire control or dilution water may cause pollution.

HOW TO GET ADDITIONAL INFORMATION

For an overview of Empire's safety practices, go to www.empiremidstream.com.