



1300 Main St.  
Houston, TX 77002  
Phone: (713) 989-7000  
Website: www.energytransfer.com

Energy Transfer, a Texas-based energy company founded in 1996 as a small intrastate natural gas pipeline company, is now one of the largest and most diversified master limited partnerships in the United States.

Strategically positioned in all of the major U.S. production basins, the company owns and operates a geographically diverse portfolio of energy assets, including midstream, intrastate and interstate transportation and storage assets. Energy Transfer, or one of its affiliates, operates more than 130,000 miles of natural gas, crude oil, natural gas liquids and refined products pipelines and related facilities, including terminalling, storage, fractionation, blending and various acquisition and marketing assets in 44 states.

For more information about local operations of **Energy Transfer**, please contact us:

**Sabine parish:**

Bob Middleton  
Operations Manager  
318-656-6145 (w), 318-560-7428 (m)  
bob.middleton@energytransfer.com

**Iberville, Pointe Coupee and St. Martin parishes:**

Randy Zeringue  
Operations Manager  
225-906-9286 (w), 225-978-5882 (m)  
randy.zeringue@energytransfer.com

**Claiborne, Lincoln, Morehouse, Ouachita and Union parishes:**

Bruce Kelpé  
Operations Manager  
318-245-2376 (m)  
bruce.kelpe@energytransfer.com

**Bienville, Bossier, Caddo, De Soto, Red River and Webster parishes:**

Billy Duggan  
Operations Manager  
318-656-6139 (w), 318-422-9821 (m)  
billy.duggan@energytransfer.com

**Calcasieu and Cameron parishes:**

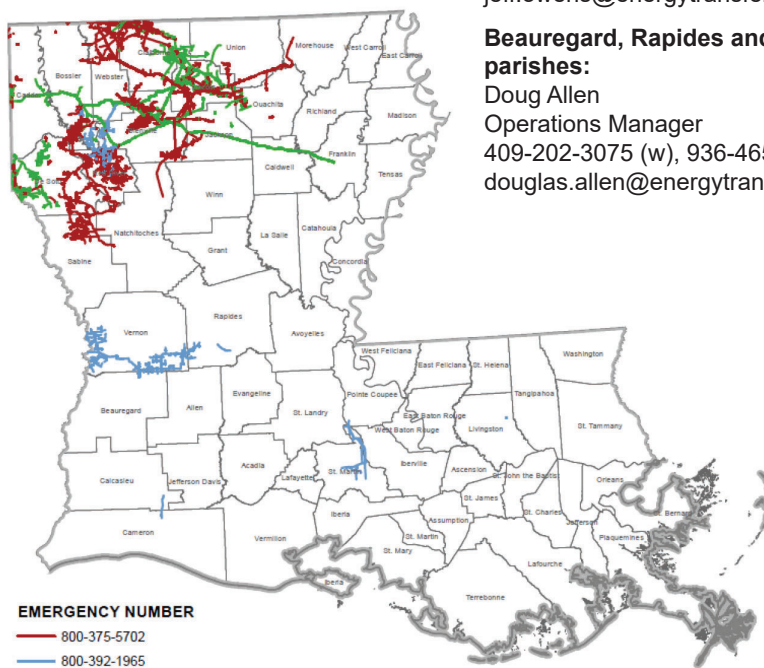
Jewel Ellison  
Operations Manager  
409-827-2105 (w), 713-591-8318 (m)  
clarence.ellison@energytransfer.com

**Caldwell, Franklin, Jackson, Natchitoches and Richland parishes:**

Jeff Owens  
Operations Manager  
318-562-2034 (w), 318-382-3100  
jeff.owens@energytransfer.com

**Beauregard, Rapides and Vernon parishes:**

Doug Allen  
Operations Manager  
409-202-3075 (w), 936-465-8061 (m)  
douglas.allen@energytransfer.com



**EMERGENCY NUMBER**

800-375-5702  
800-392-1965  
877-404-2730

**EMERGENCY CONTACT:**

1-877-404-2730, 1-800-392-1965  
or 1-800-375-5702

**PRODUCTS/DOT GUIDEBOOK ID#/GUIDE#:**

Natural Gas 1971 115

**LOUISIANA  
PARISHES OF OPERATION:**

Beauregard	Morehouse
Bienville	Natchitoches
Bossier	Ouachita
Caddo	Pointe Coupee
Calcasieu	Rapides
Caldwell	Red River
Cameron	Richland
Claiborne	Sabine
De Soto	St. Martin
Franklin	Union
Iberville	Vernon
Jackson	Webster
Lincoln	

*Changes may occur. Contact the operator to discuss their pipeline systems and areas of operation.*

