

Mardi Gras Pipeline



WHO IS MARDI GRAS MIDSTREAM LLC

The purpose of the Mardi Gras gathering pipeline is to transport natural gas from Mississippi and Northeast Washington Parish Louisiana to sales points in Bogalusa, Louisiana. The Mardi Gras pipeline system is comprised of numerous gathering pipelines used to collect natural gas from production operations and transport to central points for delivery to associated markets. Compressor stations and pumping stations are located along gathering pipeline routes and to help push energy products through the line. Chisos Pipeline company operates the MardiGras Pipeline.

Mardi Gras Midstream LLC works hard to maintain the integrity of our pipeline systems and keep them safe from security threats. We stay in contact with industry and government to monitor potential threats and study new technologies that will help keep our facilities as safe and secure as possible. Though we electronically monitor our assets around the clock, regularly patrol (by air and ground) our pipeline system and have field personnel working and living in close proximity to our facilities, we also request your help to maintain a safe, secure, and reliable pipeline system.

If you observe any unusual or suspicious activity near our pipeline facilities or in the unlikely event an emergency occurs, please call us at any time using one of the numbers listed in this document.

WHAT ARE THE SIGNS OF A NATURAL GAS PIPELINE LEAK?

- Blowing or hissing sound
- Dust blowing from a hole in the ground
- Continuous bubbling in wet or flooded areas
- Gaseous or hydrocarbon odor
- Dead or discolored vegetation in a green area
- Flames, if a leak has ignited

WHAT SHOULD I DO IF I SUSPECT A PIPELINE LEAK?

Your personal safety should be your first concern:

- Evacuate the area and prevent anyone from entering
- Abandon any equipment being used near the area
- Avoid any open flames
- Avoid introducing any sources of ignition to the area (such as cell phones, pagers, 2-way radios)
- Do not start/turn off motor vehicles/ electrical equipment
- Call 911 or contact local fire or law enforcement
- Notify the pipeline company
- Do not attempt to extinguish a natural gas fire
- Do not attempt to operate any pipeline valves

PIPELINE SAFETY

System failures occur infrequently along the nation's network of interstate natural gas pipeline facilities, and many of these are caused by damage from others digging near the pipeline. We watch for unauthorized digging, but we request your help too.

We participate in One-Call Centers and strongly encourage those who are going to dig to call their state One-Call Center or the 811 "Call before you dig" hotline (see below) to allow pipeline companies and owners of other buried utilities a chance to mark the underground facilities in the area before digging begins.



Know what's below.
Call before you dig.

EMERGENCY CONTACT:

1-601-549-3484 or
1-866-240-4431

PRODUCTS/ DOT GUIDEBOOK ID#/ GUIDE#:		
Natural Gas	1971	115

LOUISIANA PARISHES OF OPERATION:

Washington

Changes may occur. Contact the operator to discuss their pipeline systems and areas of operation.

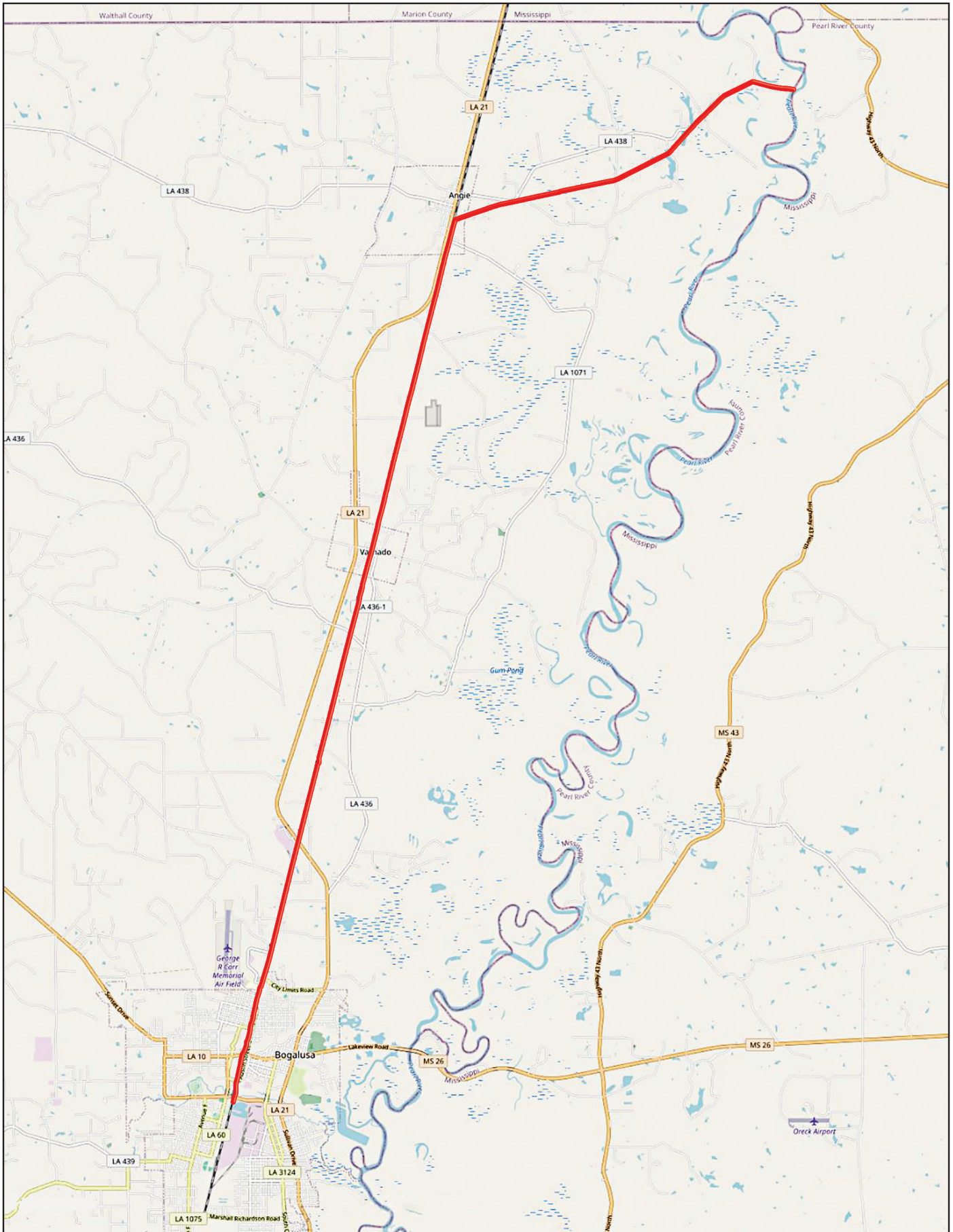


PIPELINE LOCATION AND MARKERS

Pipeline markers are used to indicate the approximate location of a natural gas pipeline and to provide contact information. Aerial patrol planes also use the markers to identify the pipeline route. Markers should never be removed or relocated by anyone other than a pipeline operator.

To find out where Mardi Gras Midstream LLC pipelines are located in your area, contact a Mardi Gras Midstream representative at the number listed above.

You can also find out where other companies' pipelines are in your area by going to the National Pipeline Mapping System website at www.npms.phmsa.dot.gov.



2.4 miles of 12" transmission and 16.5 miles of 8" gathering "