



2950 N. Harwood St. Ste 1550

Dallas, TX 75201

Main Phone: 214-613-3493

Website: www.sentinelmidstream.com

## ABOUT SENTINEL MIDSTREAM OPERATING LLC

Sentinel Midstream Operating LLC offering first-class midstream solutions for crude oil transportation and natural gas gathering. We operate pipelines in West Baton Rouge, Iberville, Ascension, St. James, Assumption, Lafourche Parish, LA. and Harris County, TX.

## SIGNS OF A PIPELINE LEAK COULD INCLUDE

- Blowing or hissing sound
- Dust blowing from a hole in the ground
- Continuous bubbling in wet or flooded areas
- Gaseous or hydrocarbon odor
- Dead or discolored vegetation in a green area
- Flames, if a leak has ignited

## WHAT DOES SENTINEL MIDSTREAM OPERATING LLC DO IF A LEAK OCCURS?

### PROTECT LIFE

- Follow Emergency Response Plans, if applicable
- Evacuate personnel and public to a safe point and isolate area
- Provide safe rescue of personnel
- Provide first aid: Call 911 and EMS
- Transport

### MITIGATE SITUATION

- Shut off hazardous energy sources
- Find closest valve to limit fuel to site
- Call appropriate agencies

### COMMUNICATE UP

- Employees - inform supervisors of emergency
- Supervisors - assess the situation and keep lines of communication open to both on-site employees and operations management
- Provide input regarding the need for additional personnel, technical services, contract specialists, etc.
- Notify corporate management as appropriate as well as the Safety/Environmental Specialist

## SECURE SITE

- Control traffic
- Set up safe perimeter/evaluate wind (use gas detection meter)
- Cooperate with law enforcement and appropriate agencies
- Refer media to spokesperson



## PIPELINE LOCATION AND MARKERS

Pipeline markers are used to indicate the approximate location of a natural gas pipeline and to provide contact information. Aerial patrol planes also use the markers to identify the pipeline route. Markers should never be removed or relocated by anyone other than a pipeline operator.

## MAINTAINING SAFETY AND INTEGRITY OF PIPELINES

Sentinel Midstream Operating LLC invests significant time and capital maintaining the quality and integrity of their pipeline system. Sentinel Midstream Operating LLC actively participates in Louisiana 811 & Texas 811, qualified one-call centers. For more information on affected HCA segments or Sentinel's

## PRODUCTS TRANSPORTED IN YOUR AREA

PRODUCT	LEAK TYPE	VAPORS
CRUDE OIL	Liquid	Can be flammable. Dark brown spots on the ground, dead vegetation or an oily sheen on top of the ground or floating on the surface of a body of water may indicate the presence of a leak in a crude oil pipeline system.
HEALTH HAZARDS		Will be easily ignited by heat, sparks or flames and will form explosive mixtures with air. Vapors may cause dizziness or asphyxiation without warning and may be toxic if inhaled at high concentrations. Contact with gas or liquefied gas may cause burns, severe injury and/or frostbite. Fire may produce irritating and/or toxic gases.
NITROGEN	Liquid	Initially heavier than air and spread along ground. Vapors may travel to source of ignition and flash back.
HEALTH HAZARDS		Product is a simple asphyxiant and non-flammable. Vapors may cause dizziness or asphyxiation without warning and may be toxic if inhaled. Contact with gas or liquefied gas may cause burns, severe injury and/or frostbite.

## EMERGENCY CONTACT: 1-888-303-3460

### PRODUCTS/DOT GUIDEBOOK ID#/GUIDE#:

Crude Oil	1267	128
Nitrogen	1066	121

## LOUISIANA PARISHES OF OPERATION:

Ascension	Lafourche
Assumption	St. James
Iberville	West Baton Rouge

## TEXAS COUNTIES OF OPERATION:

Harris

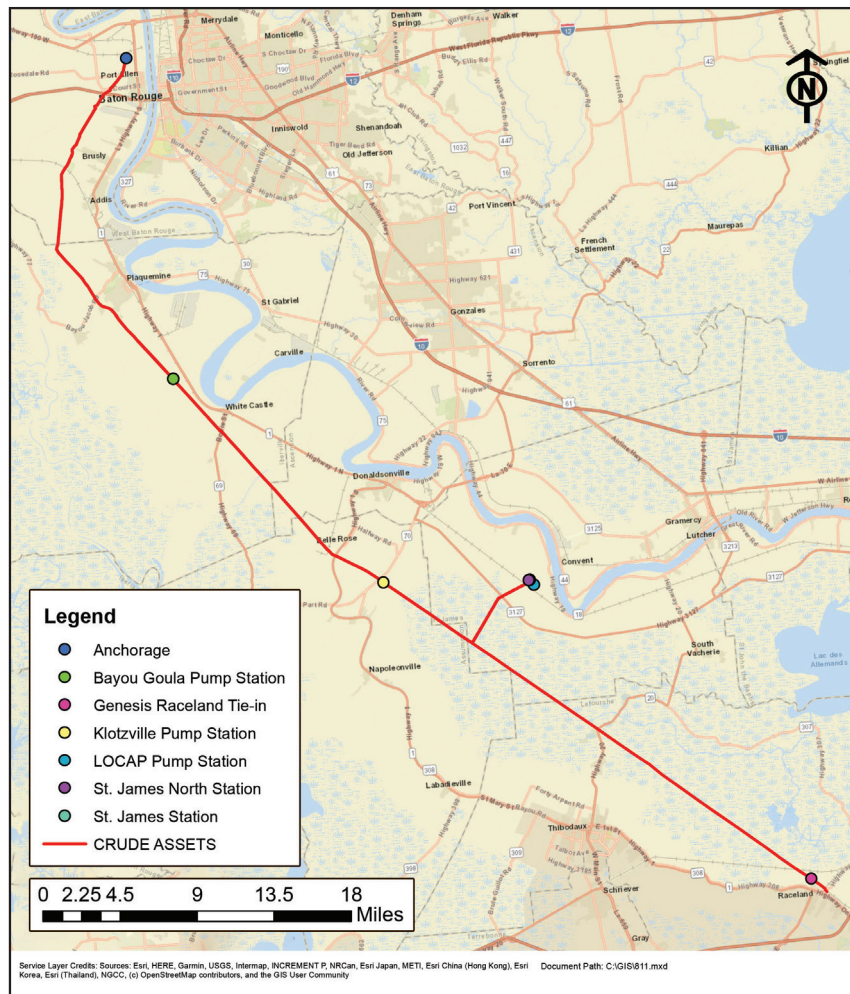
*Changes may occur. Contact the operator to discuss their pipeline systems and areas of operation.*

Integrity Management Plan please contact Jared Ledet (LA assets) at 225-725-2050 or Even Wehking (TX assets) at 281-767-2511.

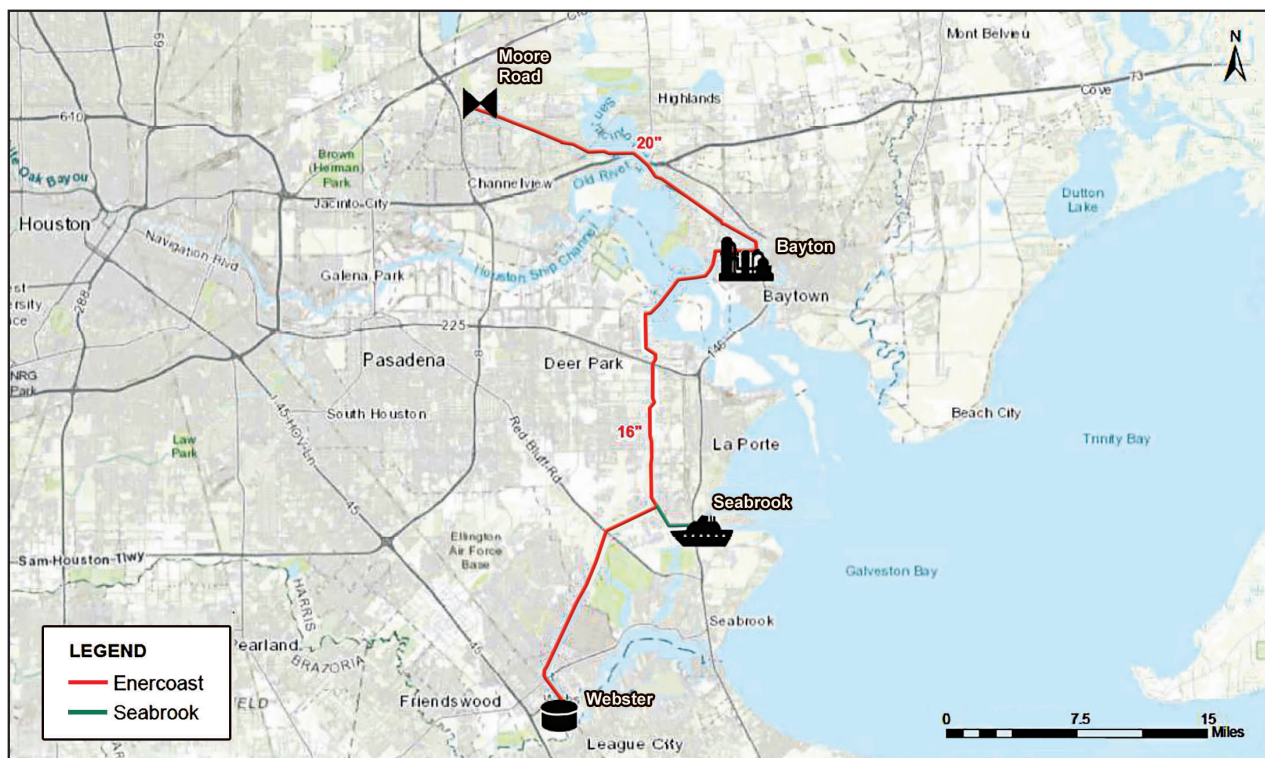
## HOW TO GET ADDITIONAL INFORMATION

For additional information about Sentinel Midstream Operating LLC visit [www.sentinelmidstream.com](http://www.sentinelmidstream.com) or contact us directly.





Louisiana System Map



Texas System Map