



**Corporate Headquarters:**  
 Phillips 66 Pipeline LLC  
 2331 Citywest Blvd  
 Houston, TX 77042  
[www.phillips66pipeline.com](http://www.phillips66pipeline.com)

**PHILLIPS 66 PIPELINE LLC OWNS OR OPERATES APPROXIMATELY 2.1 MILES OF PIPELINE AND 2 STORAGE TERMINALS IN NEW JERSEY.**

**EMERGENCY CONTACT:**  
1-877-267-2290

<b>PRODUCTS/ DOT GUIDEBOOK ID#/ GUIDE#:</b>		
Bio-Diesel Fuel	1202	128
Butane	1011	115
Diesel Fuel	1202	128
Ethanol	1170	127
Gasoline	1203	128
Jet Fuel	1223	128
Naphtha	1334	133
Natural Gas	1971	115

**NEW JERSEY**  
**COUNTIES OF OPERATION:**

Union

---

*Changes may occur. Contact the operator to discuss their pipeline systems and areas of operation.*

**Operating with Integrity**

Pipelines are one of the most reliable methods to move energy products, helping to meet our nation’s growing economic and energy needs. They operate under many government regulations and industry standards. These measures address all aspects of pipeline operation, such as where and how they are built, operated and maintained -- and Phillips 66 Pipeline LLC applies best practices that often exceed requirements.

**Committed to Safety and Reliability**

Our commitment to safety goes further, with the goal that everyone who lives or works near our assets is aware of our lines and facilities, adopts safe digging practices, learns the signs of a potential pipeline leak and knows how to quickly respond if he or she suspects a problem. As part of our on-going damage prevention program, we employ many tactics to ensure the safety of our communities.

**Emergency Response Capabilities**

Phillips 66 Pipeline LLC has committed resources to prepare and implement its emergency response plans and has obtained, through contract, the necessary private personnel and equipment to respond to a worst case discharge, to the maximum extent practical.

**Communications**

Phillips 66 Pipeline LLC employs a 24-hour Control Center as a hub of communication in emergency response situations. On-site communications are conducted using cellular phones; and portable radios and/or land-line telephone systems from facilities and offices.

**Incident Command System**

Phillips 66 Pipeline LLC utilizes an expandable Incident Command System. Personnel and federal, state and local agencies may be integrated into the Unified Command Structure, scalable to the size and complexity of an incident.

**Spill Response Equipment**

Phillips 66 Pipeline LLC maintains emergency response trailers and equipment at strategically-located facilities. Response equipment may include spill boom (as needed and of various types, sizes and lengths), absorbent materials, boats, motors, hand and power tools, pumps, hoses, personal protective equipment (PPE), first aid and miscellaneous supplies. Each trailer is inspected; equipment is deployed during drills on a regular basis.

**Oil Spill Contractors**

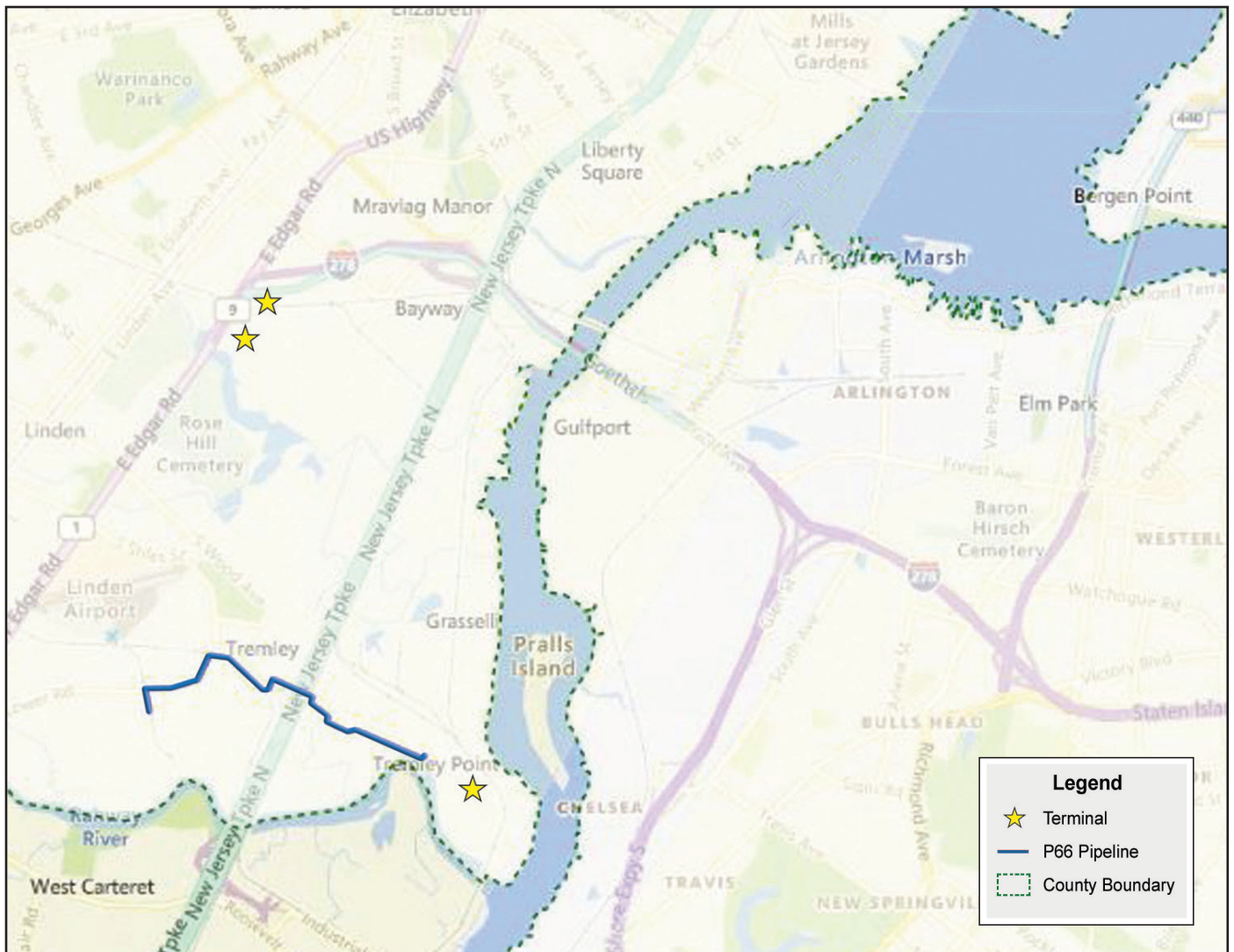
Certified Oil Spill Response Organizations (OSROs) are under contract by Phillips 66 Pipeline LLC for use in this area. Oil Spill Response Limited (OSRL) and associated STAR Contractors are used globally.

The Phillips 66 Pipeline LLC Emergency Response Action Plan (ERAP) contains specific contact and resource information for these companies. In addition, these OSROs are invited to participate in training and pre-planning exercises with Phillips 66 Pipeline LLC local and regional response teams. OSROs and Co-Ops can be relied upon for an appropriate level of response, with spill response equipment and trained personnel.

**Response Plans and Maps**

To view and download emergency response plans and procedures, visit <https://my.spatialobjects.com/erpp/home>.

To view and obtain GIS map files of our locations, visit <https://www.phillips66pipeline.com/maps/>



**ADDITIONAL INFORMATION AND RESOURCES**

Visit the following industry and government sites for important safety references and educational materials.

**National Association of State Fire Marshal’s “Pipeline Emergencies”**

[www.pipelineemergencies.com](http://www.pipelineemergencies.com)

**PHMSA Emergency Response Guidebook**

[www.phmsa.dot.gov/hazmat/erg/emergency-response-guidebook-erg](http://www.phmsa.dot.gov/hazmat/erg/emergency-response-guidebook-erg)

**National Pipeline Mapping System**

[www.npms.phmsa.dot.gov](http://www.npms.phmsa.dot.gov)

**Phillips 66 Pipeline LLC ERAP Portal**

<https://my.spatialobjects.com/erpp/home>

**Pipelines and Informed Planning Alliance**

<http://primis.phmsa.dot.gov/comm/pipa/landuseplanning.htm>

*This document is for informational purposes only and does not replace, substitute or preempt any interaction or agreements with Phillips 66 Pipeline LLC or its representatives. For specific information, including state-specific questions, contact 800-231-2566.*

**CONTACT**

**PHILLIPS 66 PIPELINE LLC**

**Phillips 66 Pipeline LLC Headquarters**

2331 Citywest Blvd

Houston, TX 77042

[www.phillips66pipeline.com](http://www.phillips66pipeline.com)

**Non-Emergency Phone Number**

800-231-2566

**Emergency Phone Number**

877-267-2290