



# SALT CREEK MIDSTREAM

## ABOUT SCM OPERATIONS, LLC

SCM Operations, LLC is the operator of Gas and Crude Pipelines and associated facilities in Texas and New Mexico owned by Salt Creek Midstream, LLC and SCM Crude, LLC.

SCM Operations, LLC is also the operator of NGL Pipelines and associated facilities in Texas owned by SCM Alpine, LLC. Pipelines range from 4" to 30" in diameter.

## WHAT DOES SCM OPERATIONS, LLC DO IF A LEAK OCCURS?

To prepare for the event of a leak, SCM Operations, LLC regularly communicates, plans and trains with local emergency responders. Upon the notification of an incident or leak, SCM Operations, LLC will immediately dispatch trained personnel to assist emergency responders. SCM

Operations, LLC and emergency responders are trained to protect life, property and facilities in the case of an emergency. SCM Operations, LLC will also take steps to minimize the amount of product that leaks out and to isolate the pipeline emergency.

## MAINTAINING SAFETY AND INTEGRITY OF PIPELINES

SCM Operations, LLC invests significant time and capital maintaining the quality and integrity of their pipeline systems. SCM Operations, LLC also utilizes leak surveys and on-ground observers to identify potential dangers. Pipeline personnel continually monitor the pipeline system and assess changes in pressure and flow. They notify field personnel if there is a possibility of a leak. SCM Operations, LLC actively participates in Texas 811 and NM811 qualified one-call centers.

## EMERGENCY RESPONDERS

Contact us directly to attain more information on our emergency response plan at 281-949-8794.

## HOW TO GET ADDITIONAL INFORMATION

For more information about our operations please contact us at 281-949-8794.

## EMERGENCY CONTACT: 1-800-807-3628

### PRODUCTS/DOT GUIDEBOOK ID#/ GUIDE#:

Crude	1267	128
Natural Gas	1971	115
NGL	1972	115

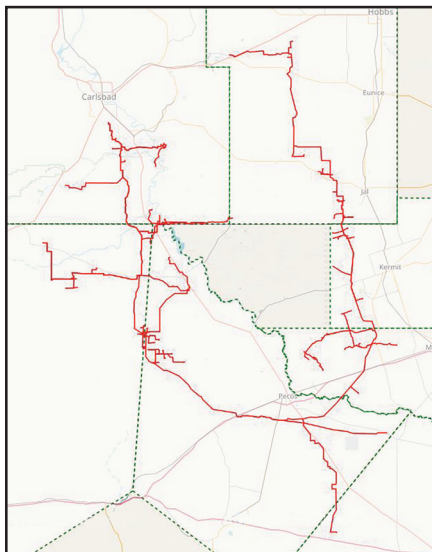
### NEW MEXICO COUNTIES OF OPERATION:

Eddy                      Lea

### TEXAS COUNTIES OF OPERATION:

Culberson              Ward  
Pecos                      Winkler  
Reeves

*Changes may occur. Contact the operator to discuss their pipeline systems and areas of operation.*



## PRODUCTS TRANSPORTED

PRODUCT	LEAK TYPE	VAPORS
<b>HIGHLY VOLATILE LIQUIDS [SUCH AS: BUTANE, PROPANE, AND NATURAL GAS LIQUIDS (NGL)]</b>	Gas	Initially heavier than air, spread along ground and may travel to source of ignition and flash back. Product is colorless, tasteless and odorless.
<b>HEALTH HAZARDS</b>	Will be easily ignited by heat, sparks or flames and will form explosive mixtures with air. Vapors may cause dizziness or asphyxiation without warning and may be toxic if inhaled at high concentrations. Contact with gas or liquefied gas may cause burns, severe injury and/or frostbite. Fire may produce irritating and/or toxic gases.	
<b>NATURAL GAS</b>	Gas	Lighter than air and will generally rise and dissipate. May gather in a confined space and travel to a source of ignition.
<b>HEALTH HAZARDS</b>	Will be easily ignited by heat, sparks or flames and will form explosive mixtures with air. Vapors may cause dizziness or asphyxiation without warning and may be toxic if inhaled at high concentrations. Contact with gas or liquefied gas may cause burns, severe injury and/or frostbite.	
<b>HAZARDOUS LIQUIDS [SUCH AS: CRUDE OIL, DIESEL AND OTHER REFINED PRODUCTS]</b>	Liquid	Initially heavier than air and spread along ground and collect in low or confined areas. Vapors may travel to source of ignition and flash back. Explosion hazards indoors, outdoors or in sewers.
<b>HEALTH HAZARDS</b>	Inhalation or contact with material may irritate or burn skin and eyes. Fire may produce irritating, corrosive and/or toxic gases. Vapors may cause dizziness or suffocation. Runoff from fire control or dilution water may cause pollution.	