

# SPC RESOURCES, LLC

## ABOUT SPC RESOURCES, LLC

SPC Resources, LLC (“SPC”), headquartered in Artesia, NM, owns and operates a natural gas gathering system spanning over 10 miles in the Southeast New Mexico, a portion of which is a DOT PHMSA regulated line. SPC Resources LLC operates gathering lines for the purpose of transporting natural gas to third party purchaser.

SPC pipeline system and facilities are located near the city of Carlsbad in Eddy County, NM.

## WHAT DOES SPC RESOURCES DO IF A LEAK OCCURS?

To prepare for the event of a leak, pipeline companies regularly communicate, plan and train with local emergency responders. Upon the notification of an incident or leak the pipeline company will immediately dispatch trained personnel to assist emergency responders.

Pipeline operators and emergency responders are trained to protect life, property and facilities in the case of an emergency.

Pipeline operators will also take steps to minimize the amount of product that leaks out and to isolate the pipeline emergency.

## MAINTAINING SAFETY AND INTEGRITY OF PIPELINES

SPC invests significant time and capital maintaining the quality and integrity of their pipeline systems. Its active

pipelines are consistently monitored by field personnel. SPC also utilizes aerial surveillance and/or on-ground observers to identify potential dangers. Field personnel monitor the pipeline system and assess changes in pressure and flow and identify and address any possibility of a leak. Automatic shut-off valves are sometimes utilized to isolate a leak.

Gas gathering pipeline operators have developed supplemental hazard and assessment programs known as Safety Management Programs. Specific information about SPC’s program may be found on by contacting us directly.

## PRODUCTS TRANSPORTED

**Product:** Natural Gas

**Leak Type:** Gas

**Vapors:** Lighter than air and will generally rise and dissipate. May gather in a confined space and travel to a source of ignition.

**Health Hazards:** Will be easily ignited by heat, sparks or flames and will form explosive mixtures with air. Vapors may

## EMERGENCY CONTACT: 1-800-994-1834

**PRODUCTS/DOT GUIDEBOOK ID#/GUIDE#:**  
 Natural Gas 1971 115

## NEW MEXICO COUNTIES OF OPERATION:

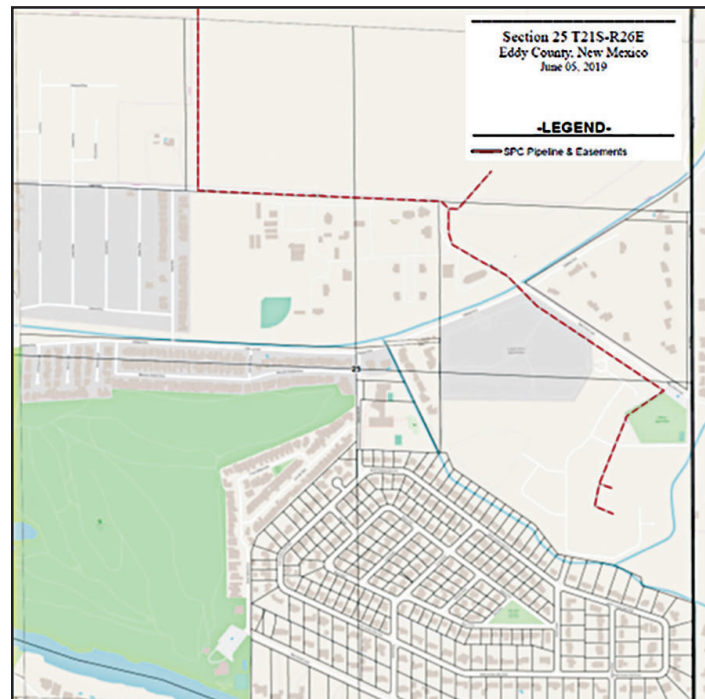
Eddy

*Changes may occur. Contact the operator to discuss their pipeline systems and areas of operation.*

cause dizziness or asphyxiation without warning and may be toxic if inhaled at high concentrations. Contact with gas or liquefied gas may cause burns, severe injury and/or frostbite.

## HOW TO GET ADDITIONAL INFORMATION

For additional information, go to [www.santos.com](http://www.santos.com) or contact us at 575-736-3250.



The gathering line is a 4” welded steel pipeline. The name of the gathering system is the Tracy-Louise Gathering System