

KEYERA

ABOUT THE KEYERA PIPELINE

Keyera operates the Wildhorse Terminal that includes three 24-inch in diameter crude oil pipelines. The terminal and pipelines are located in the Cushing, Oklahoma area and primarily in Lincoln County and two pipelines cross into Payne County. Keyera's crude oil terminal is safe, well-maintained that has been designed, built and located to minimize public impact. The terminal includes breakout tanks for temporary storage of crude oil and liquids.

WHAT DOES KEYERA DO IF A LEAK OCCURS?

Upon notification of an incident or leak the pipeline company will immediately dispatch trained personnel to assist emergency responders.

Pipeline operators and emergency responders are trained to protect life, Property and facilities in the case of an emergency.

Pipeline operators will also take steps to minimize the amount of product that leaks out and isolate the pipeline emergency.

MAINTAINING SAFETY AND INTEGRITY OF PIPELINES

Keyera invests time and capital maintaining the quality and integrity for their pipeline systems. Keyera also utilizes aerial surveillance and/or on-ground observers to identify potential dangers. Control center personnel continually monitor the pipeline system and assess changes in pressure and flow. They notify field personnel if there is a possibility of a leak. Automatic shut-off valves are sometimes utilized to isolate a leak.

The terminal tanks are routinely monitored, inspected and maintained by trained terminal personnel. This includes extensive in-service inspections, full cleanings involving internal inspections and regular visual inspections.

HOW TO GET ADDITIONAL INFORMATION

For additional information, go to www.keyera.com or contact 1-713-391-9642.

CALL BEFORE YOU DIG (811)

We need your help in preventing pipeline emergencies. If your company does excavation work, or if you are a homeowner or farmer and dig on your property, the law requires you to call your local One-Call Center, OKIE (811) prior to beginning your excavation. Notification is at no cost to you. Statistics show that damage from excavation-related activities, particularly from equipment digging into pipelines, is a leading cause of pipeline accidents. Never guess where a pipeline is located. Always follow these important steps:

1. Call before you dig. A free call to the One-Call Center, OKIE (811) at least 72 hours before starting any work is all it takes. The One-Call Center, OKIE (811) will notify all underground utilities in the area of the planned work.
2. Wait the required amount of time. One of our trained technicians will mark the location of our pipeline at no cost to you.
3. Respect the marks.
4. Dig with care. If you accidentally damage or hit the pipeline, no matter how minor the contact may seem, call Keyera immediately so we can assess the damage.



EMERGENCY CONTACT: 1-800-661-5642

PRODUCTS/ DOT GUIDEBOOK ID#/ GUIDE#:		
Crude Oil	1267	128

OKLAHOMA COUNTIES OF OPERATION:

Lincoln Payne

Changes may occur. Contact the operator to discuss their pipeline systems and areas of operation.

PRODUCTS TRANSPORTED IN YOUR AREA

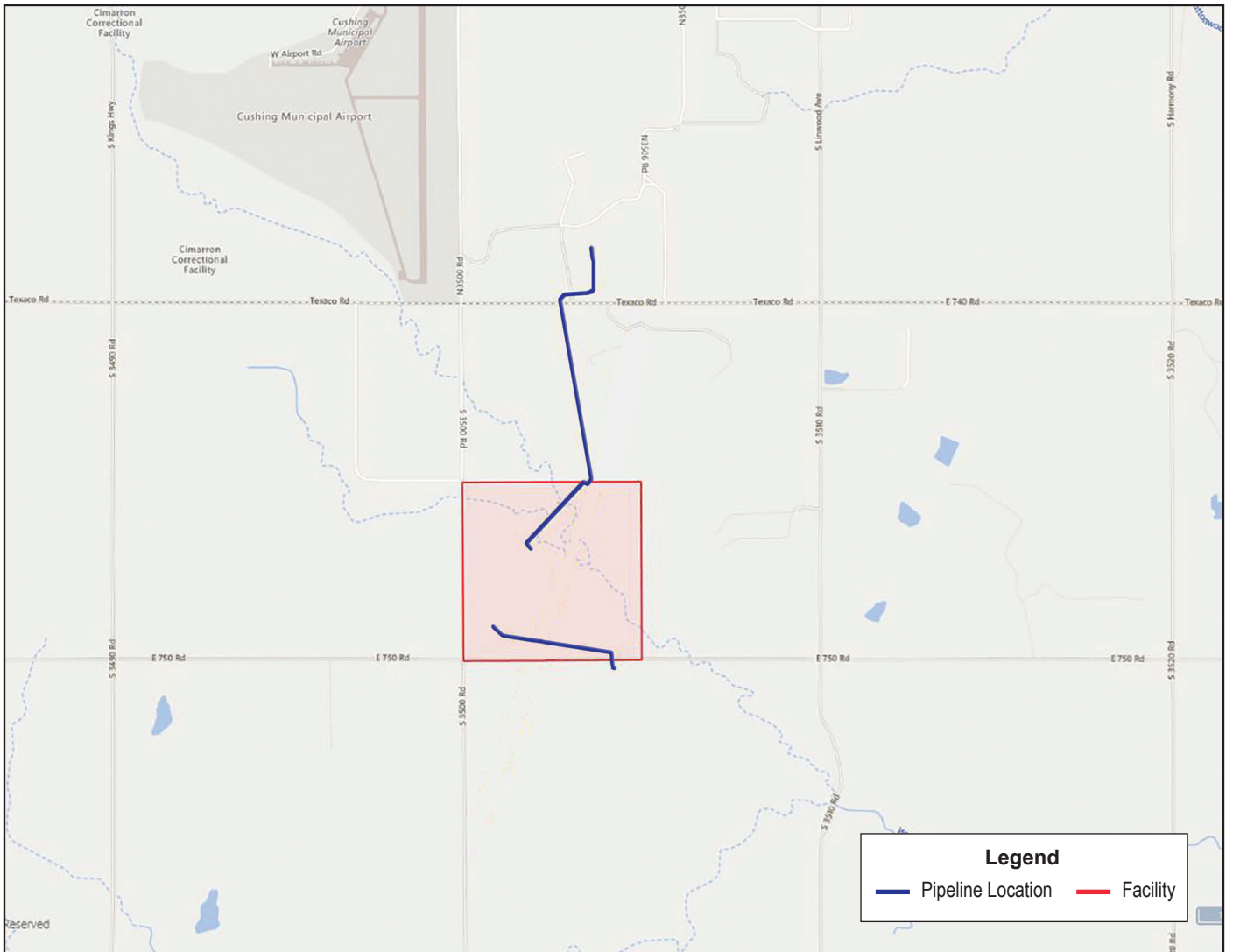
Product: Crude Oil

Leak Type: Liquid or Vapor

Vapors: Avoid breathing gas/vapors. The highly flammable vapors are heavier than air and may accumulate in low areas and or spread along ground to distant ignition sources and flash back. Ventilate closed spaces before entering.

Health Hazards: Both in a liquid and vapor state it is highly flammable. Harmful if inhaled. Causes damage to central nervous systems, respiratory tract, heart. Causes skin irritation. Causes serious eye irritation. May be fatal if swallowed and enters airways. May cause cancer. May damage fertility or the unborn child.





Base map courtesy of openstreetmap.org