

# WM Renewable Energy, LLC

**Brian Rammel**  
1021 Main St.  
Houston, TX 77002  
E-Mail: brammel@wm.com

## WM RENEWABLE ENERGY, LLC PIPELINE

WM Renewable Energy, LLC (WMRE) owns and operates a 1-mile underground pipeline and associated landfill gas fuel processing plant, located in Oklahoma County, Oklahoma. The Landfill gas fuel is produced at the Waste Management - East Oak Security Landfill (3201 Moseley Rd, Oklahoma City, OK 73141). This pipeline is currently inactive, but may be activate at any point in the future. WMRE operates this pipeline under the regulatory oversight of Oklahoma Corporation Commission Public Utility Division and the US Department of Transportation, Pipeline and Hazardous Material Safety Administration. WMRE's pipeline system complies with other, applicable federal, state and local permitting agency regulations.

Keep this information handy as a reference. If you have questions, contact WMRE's security operations center toll free at 877-587-8519. The one call operator will direct your request to the appropriate individual. This pipeline is currently inactive, but may be activate at any point in the future.

## SAFETY STANDARDS

WMRE operates this pipeline utilizing the highest level of safety standards. Our commitment to safety helps protect the public, our employees and the pipeline. Being prepared to recognize a potential pipeline problem—and react appropriately is also part of staying safe.

## WHAT IS LANDFILL GAS?

Landfill gas fuel is:

- A natural decomposition by-product of organic waste disposed in landfills
- Composed of approximately 50-60% methane, 40-50% carbon dioxide, and other trace compounds
- Flammable and has fuel value
- Recognized as a renewable energy source with environmental and economic benefits

## LANDFILL GAS FUEL - DISTINCT ODOR

Landfill gas fuel can easily be detected by its natural odor. In contrast to the odor of natural gas delivered by a utility to your home or business, landfill gas has a distinct, rotten egg, sulfur-like odor. This odor, produced by sulfur compounds present in the gas, is part of the natural waste decomposition process. WMRE regularly monitors the intensity of the landfill gas "natural odor" to assure it can be detected in case of a leak.

If you detect a distinct sulfur or rotten egg odor near the WMRE pipeline, proceed to a safe location and call our emergency number 24 hours a day at (877) 587-8519. Be certain to state your specific location and the reason for your call.

## WHAT IS A RIGHT-OF-WAY?

A pipeline right-of-way is a corridor or strip of land that surrounds a pipeline. A right-of-way agreement enables us to construct, operate, test, inspect, maintain and protect our pipelines. A typical right-of-way extends about 10 feet from each side of the pipeline.

## CAN I USE LAND ON OR NEAR A RIGHT-OF-WAY?

Generally, under our right-of-way agreement, landowners may use their land as they see fit provided the activity does not interfere with rights granted to us to access, maintain, operate, replace and protect WMRE's pipeline. Do not excavate, build, demolish, store or place anything on or near the right-of-way without first notifying the Okie811 and WMRE. If needed, WMRE personnel will stake the pipeline location. The Okie811 number to call before beginning excavation or demolition work near the pipeline is 8-1-1 or 1-800-522-6543..

WMRE personnel regularly inspect the pipeline right-of-way for signs of gas leaks or other abnormal operating conditions, such as construction activity near the pipeline.

## EMERGENCY CONTACT:

1-877-587-8519

### PRODUCTS/DOT GUIDEBOOK ID#/GUIDE#:

Landfill Gas Fuel	1971	115
-------------------	------	-----

### OKLAHOMA COUNTIES OF OPERATION:

Oklahoma

*Changes may occur. Contact the operator to discuss their pipeline systems and areas of operation.*



## HOW IS THE PIPELINE MARKED?

WMRE uses pipeline markers to indicate the approximate location of the underground pipeline. Pipeline markers are spaced along the right-of-way. Markers identify WMRE as being the operator of the gas pipeline facility and state the 24-hour emergency telephone number 877-587-8519.

It is illegal to remove pipeline markers from the pipeline right-of-way. Markers are placed as a reminder that a buried pipeline is present and helps protect the pipeline and public safety.

## KNOW THE SIGNS OF A LANDFILL GAS FUEL LEAK

The leading cause of pipeline accidents is damage from someone other than the owner or operator of the pipeline. In most cases, this damage occurs when someone unknowingly digs, levels land, blasts or drills in the area of a pipeline.

Warning Signs of a Gas Pipeline Leak Include:

- Damage to pipeline facilities and markers

- Exposed pipe in wet areas, ditches, streams
- A blowing or hissing sound or dust blowing from a hole in the ground
- Continuous bubbling from one spot in wet or flooded areas
- A sulfur-like, or rotten egg odor
- A spot of dead or discolored vegetation in an otherwise green location
- Abnormally dry or hardened soil
- Flames

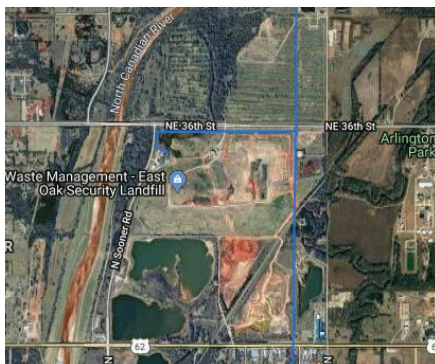
## STEPS TO TAKE IF YOU SUSPECT A LEAK

1. If you suspect a Landfill Gas Pipeline Leak:
2. Immediately shut down and abandon motorized equipment being used in or near the area.
3. Leave the immediate area quickly, proceeding upwind and warn others to stay away.
4. Keep all sources of ignition away from the leak.
5. From a safe distance, call local 911 emergency response, and WMRE at (877) 587-8519.

DO NOT use open flames or bring telephones, flashlights or motor vehicles into the area that may create a spark and potentially ignite the gas leak. DO NOT try to extinguish a gas fire or operate any pipeline valves.

## EXCAVATION WORK – FREQUENT CAUSE OF DAMAGE

Excavation work is the most frequent cause of damage to pipelines and associated facilities. Whenever planning excavation or demolition work, protect yourself and your property by first notifying Okie811. Dial 8-1-1 or 1-800-522-6543.



State laws require any person making or beginning ANY excavation to notify all underground facility owners/operators, which may be affected by the excavation at least 48 hours but no more than 10 working days in advance (excluding weekends and legal holidays).

Never guess about the location of an underground pipeline or facility, or if an activity is appropriate in the vicinity. Giving advance notice by contacting Okie811 and following construction guidelines allows you to plan projects with the assurance that your safety, and the safety of others, is not compromised. It also gives WMRE assurance that our facilities will not be damaged by these activities. Calling Okie811 not only protects you, your employees, and WM's pipeline, it is also the law.

## WHAT IF I UNEXPECTEDLY ENCOUNTER A PIPELINE

If you dig and hit or touch a pipeline, contact us immediately at (877) 587-8519. Even a small gouge, scrape, scratch, dent or crease to the pipe may cause leaks, thereby compromising the safety of the pipeline. To assure safety of the pipeline, WMRE must inspect and repair any damage, no matter how minor it appears.

## TRANSMISSION PIPELINE MAPPING

The U.S. Department of Transportation's Office of Pipeline Safety has developed the National Pipeline Mapping System (NPMS) to provide information about gas transmission and liquid transmission operators and their pipelines. The NPMS Web site is searchable by zip code or by county and state, and can display a county map that is printable. For a list of pipeline operators with pipelines in your area and their contact information, go to [www.npms.phmsa.dot.gov](http://www.npms.phmsa.dot.gov). Operators of production facilities, gas/liquid gathering piping and distribution piping, are not represented by NPMS nor are they required to be.

## DAMAGE PREVENTION

Waste Management maintains a Damage Prevention Program in accordance with state and federal guidelines.

The purpose of this program is to prevent damage to our pipelines and facilities from excavation activities, such as digging, trenching, blasting, boring, tunneling, backfilling, or by any other digging activity.

## SUGGESTED EMERGENCY PROCEDURES (FOR EMERGENCY RESPONDERS)

In the event of a pipeline emergency, steps must be taken to ensure public safety. WMRE offers the following suggestions:

- Call WMRE immediately at 877-587-8519. Report the type (leak, fire, other) and location of the emergency.
- Establish a safety area and control access into this area; this may include evacuation of the area. Be sure to allow WMRE employees access and work with them to control the situation.
- Avoid doing anything that may ignite escaped gas.
- Monitor wind direction and be aware of potential ignition sources.
- Control secondary fires but do not try to extinguish a pipeline fire unless asked to do so by WMRE personnel.
- Do not attempt to operate pipeline valves.
- Preserve the area for investigators.

## WMRE'S EMERGENCY PROCEDURES

In a pipeline emergency, WMRE personnel will immediately attempt to control the situation. WMRE personnel will:

- Pinpoint the location of the emergency and stop or reduce gas flow to the affected area.
- Notify appropriate public officials and work with them during the emergency.
- Repair the facility and restore service to customers as soon as possible.
- Investigate the cause of the emergency.

## CONTACT US

If you have any questions or would like additional information on pipeline safety, please call us at (877) 587-8519. The on call operator will direct your request to the appropriate individual.

## ALWAYS CALL 8-1-1 BEFORE YOU DIG IN OKLAHOMA.

