



**WHO IS JKLM ENERGY LLC**

JKLM Energy LLC operates about 26 miles of natural gas pipelines in Potter county Pennsylvania.

If you observe any unusual or suspicious activity near our pipeline facilities or in the unlikely event an emergency occurs, please call us at any time using one of the numbers listed in this document.

More information on JKLM Energy LLC can be found at: [www.jklmenergy.com](http://www.jklmenergy.com)

**WHAT ARE THE SIGNS OF A NATURAL GAS PIPELINE LEAK?**

- Blowing or hissing sound
- Dust blowing from a hole in the ground
- Continuous bubbling in wet or flooded areas
- Gaseous or hydrocarbon odor
- Dead or discolored vegetation in a green area
- Flames, if a leak has ignited

**WHAT SHOULD I DO IF I SUSPECT A PIPELINE LEAK?**

Your personal safety should be your first concern:

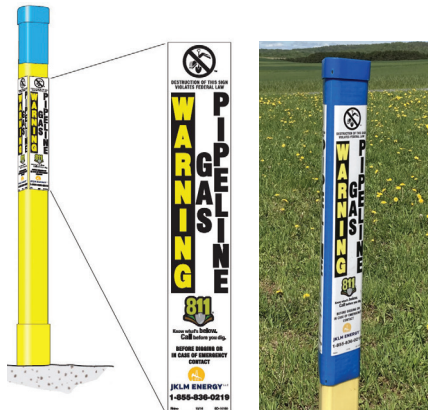
- Evacuate the area and prevent anyone from entering
- Abandon any equipment being used near the area
- Avoid any open flames
- Avoid introducing any sources of ignition to the area (such as cell phones, pagers, 2-way radios)
- Do not start/turn off motor vehicles/ electrical equipment
- Call 911 or contact local fire or law enforcement
- Notify the pipeline company
- Do not attempt to extinguish a natural gas fire
- Do not attempt to operate any pipeline valves

**PIPELINE SAFETY**

System failures occur infrequently along the nation’s network of interstate natural gas pipeline facilities, and many of these are caused by damage from others digging near the pipeline. We watch for unauthorized digging, but we request your help to notify us.



**ALWAYS CALL 811 3 BUSINESS DAYS BEFORE YOU DIG! IT’S THE LAW!**



**EMERGENCY CONTACT:  
 1-855-836-0219**

**PRODUCTS/DOT GUIDEBOOK ID#/GUIDE#:**  
 Natural Gas 1971 115

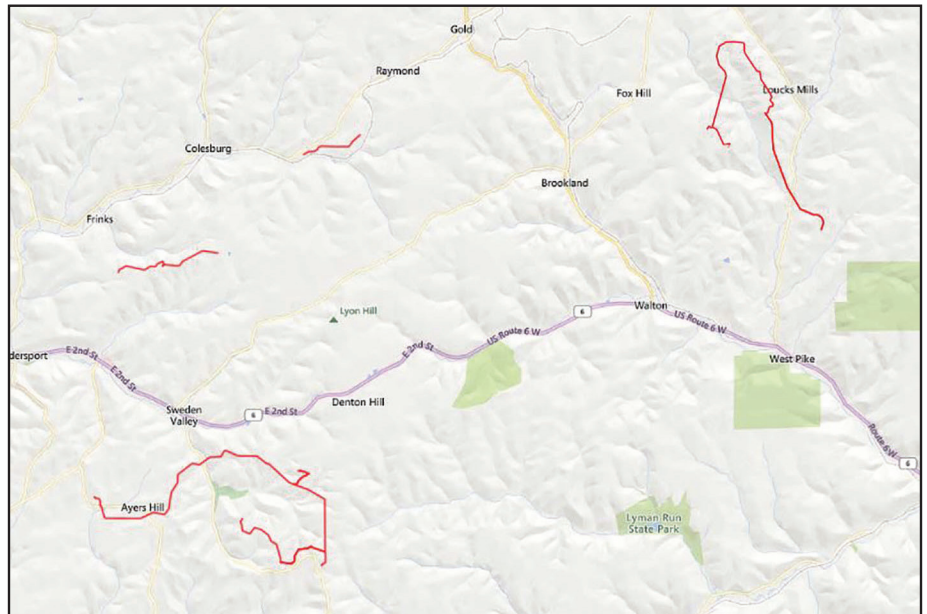
**PENNSYLVANIA  
 COUNTIES OF OPERATION:**

Potter

*Changes may occur. Contact the operator to discuss their pipeline systems and areas of operation.*

**PIPELINE LOCATION AND MARKERS**

Pipeline markers are used to indicate the approximate location of a natural gas pipeline and to provide contact information.



Pipeline Diameter: 4”-16”