



ABOUT PINE RUN MIDSTREAM

Pine Run Midstream is a Pittsburgh based midstream company focused on dry gas gathering, compression and transmission of unconventional shale resources in the Appalachian Basin. Pine Run Midstream is currently focused in Southwest Pennsylvania in the counties of Armstrong and Butler.

WHAT DOES PINE RUN MIDSTREAM DO IF A LEAK OCCURS?

To prepare for the event of a leak, pipeline companies regularly communicate, plan and train with local emergency responders. Upon the notification of an incident or leak, the pipeline company will immediately dispatch trained personnel to assist emergency responders.

Pipeline operators and emergency responders are trained to protect life, property and facilities in the case of an emergency.

Pipeline operators will also take steps to minimize the amount of product that leaks out and to isolate the pipeline emergency.

We ask for your help in identifying possible gas leaks and reporting any activity on or near our rights-of-way which might cause damage to our pipeline.

Additionally, we will:

1. Shut down the pipeline and isolate the problem
2. Identify hazards
3. Excavate and repair the damaged pipeline

MAINTAINING SAFETY AND INTEGRITY OF PIPELINES

Pine Run Midstream invests significant time and capital maintaining the quality and integrity of their gas gathering and transmission system. Pine Run Midstream utilizes on-ground observers to identify potential dangers,

**EMERGENCY CONTACT:
1-877-625-9554**

PRODUCTS/ DOT GUIDEBOOK ID#/ GUIDE#:		
Natural Gas	1971	115

**PENNSYLVANIA
COUNTIES OF OPERATION:**

Armstrong Butler

Changes may occur. Contact the operator to discuss their pipeline systems and areas of operation.

responds to locate requests received through its membership in the PA 1-Call System.

Pine Run also conducts periodic patrolling of its pipeline system, performs annual instrumented leakage and corrosion surveys, performs regular maintenance on all system valves and regularly runs internal cleaning tools as well as intermittent in-line inspection tools to ensure the internal and external integrity of its pipelines is maintained.

PRODUCTS TRANSPORTED

Product: Natural Gas

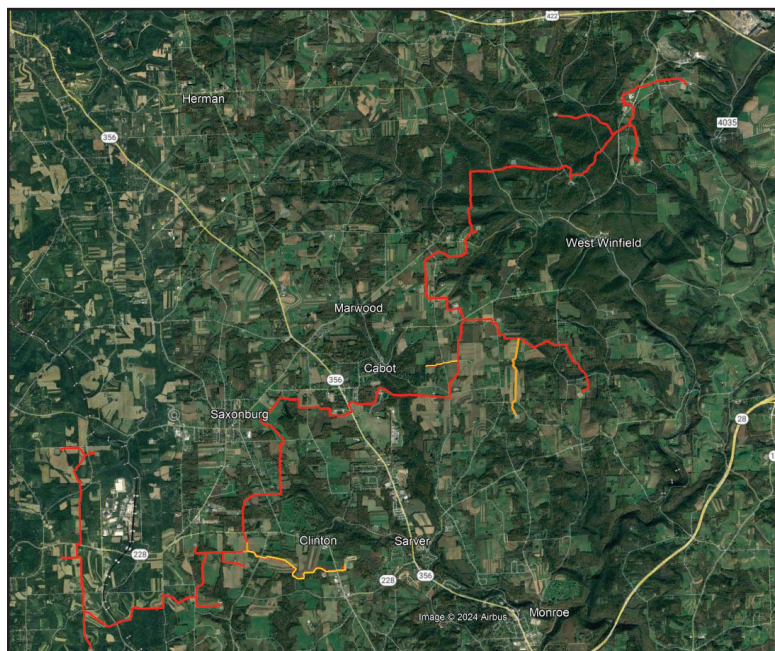
Leak Type: Gas

Vapors: Lighter than air and will generally rise and dissipate. May gather in a confined space and travel to a source of ignition.

Health Hazards: Will be easily ignited by heat, sparks or flames and will form explosive mixtures with air. Vapors may cause dizziness or asphyxiation without warning and may be toxic if inhaled at high concentrations. Contact with gas or liquefied gas may cause burns, severe injury and/or frostbite.

HOW TO GET ADDITIONAL INFORMATION

For an overview of Pine Run Midstream IMP, contact Pine Run Midstream at 877-625-9554.



Pipe sizes range from 6" to 16"

