



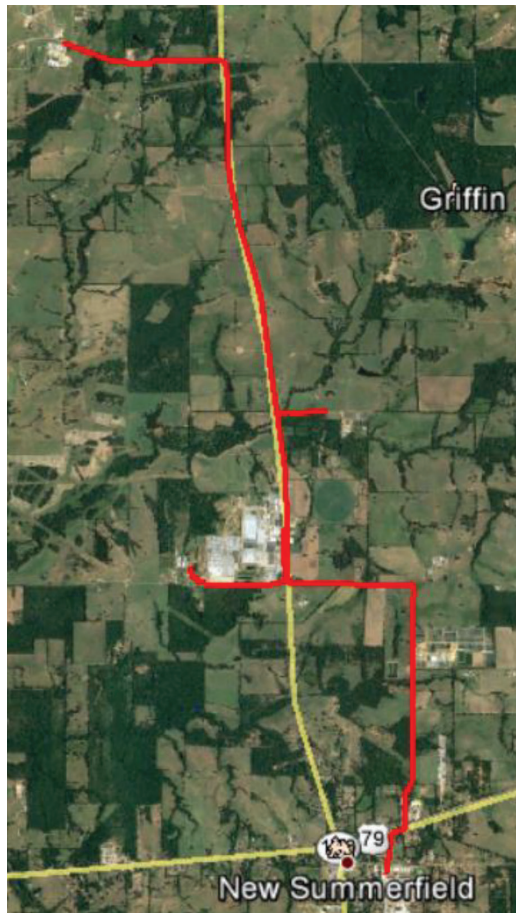
ABOUT 5P PIPELINE

5P Pipeline, headquartered at 110 South Ragsdale, Jacksonville TX, is a natural gas distribution system covering 8 miles in Cherokee County TX. 5P Pipeline employees and its pipeline system and facilities are located Cherokee County TX.

WHAT DOES 5P PIPELINE DO IF A LEAK OCCURS?

To prepare for the event of a leak, pipeline companies regularly communicate, plan and train with local emergency responders. Upon the notification of an incident or leak the pipeline company will immediately dispatch trained personnel to assist emergency responders.

SYSTEM MAP



Pipeline operators and emergency responders are trained to protect life, property and facilities in the case of an emergency.

Pipeline operators will also take steps to minimize the amount of product that leaks out and to isolate the pipeline emergency.

MAINTAINING SAFETY AND INTEGRITY OF PIPELINES

5P Pipeline invests significant time and capital maintaining the quality and integrity of their pipeline systems. 5P Pipeline also utilizes on-ground observers to identify potential dangers.

The 5P Pipeline system is comprised of a pipeline delivering Natural Gas from transmission pipelines and delivers to commercial greenhouses.

EMERGENCY CONTACT:

1-877-802-4470

PRODUCTS/ DOT GUIDEBOOK ID#/ GUIDE#:

Natural Gas 1971 115

TEXAS

COUNTIES OF OPERATION:

Cherokee

Changes may occur. Contact the operator to discuss their pipeline systems and areas of operation.

PRODUCT TRANSPORTED

Product: Natural Gas

Leak Type: Gas

Vapors: Lighter than air and will generally rise and dissipate. May gather in a confined space and travel to a source of ignition.

Health Hazards: Will be easily ignited by heat, sparks or flames and will form explosive mixtures with air. Vapors may cause dizziness or asphyxiation without warning and may be toxic if inhaled at high concentrations. Contact with gas or liquefied gas may cause burns, severe injury and/or frostbite.

HOW TO GET ADDITIONAL INFORMATION

5P Pipeline does have an Integrity Management Plan. The Emergency number is the main office number.



PIPELINE SIGN