



Canes Midstream G&P LLC
 Canes Midstream Products LLC
 Canes Midstream Logistics LLC
 Canes Intrastate Pipeline LLC

ABOUT CANES MIDSTREAM

Canes Midstream is a midstream natural gas pipeline operator based in Dallas Texas. Our operations in the Texas Permian Basin consists of Canes Midstream Products, LLC, Canes Midstream Logistics, LLC, Canes Midstream G&P LLC and Canes Intrastate Pipeline, LLC. Our main areas of operation are Crockett, Glasscock, Irion, Mitchell, Reagan, Sterling and Upton Counties. The majority of these pipelines are operated for natural gas & crude oil gathering purposes. In addition, our companies operate several intrastate natural gas and natural gas liquid pipelines.

WHAT DOES CANES MIDSTREAM DO IF A LEAK OCCURS?

Canes Midstream is dedicated to operating safe pipelines and employ several measures to help ensure pipeline integrity. Pipeline pressures are continually monitored. Abnormally high or low pressures are alarmed through our Supervisory Control And Data Acquisition (SCADA) system. In addition, trained operations and maintenance personnel regularly inspect the right-of-way for leaks and encroachment activities which may negatively affect our pipelines. External and internal corrosion is monitored to help ensure the integrity of our pipelines. For increased public safety, we have installed pipeline markers which show the approximate location of our buried pipelines. These markers are installed at public road and rail crossings, and along the entire length of our pipelines.



MAINTAINING SAFETY AND INTEGRITY OF PIPELINES

Canes Midstream is dedicated to operating safe pipelines and employ several measures to help ensure pipeline integrity. Pipeline pressures are continually monitored. Abnormally high or low pressures are alarmed through our Supervisory Control And Data Acquisition (SCADA) system. In addition, trained operations and maintenance personnel regularly inspect the right-of-way for leaks and encroachment activities which may negatively affect our pipelines. External and internal corrosion is monitored to help ensure the integrity of our pipelines. For increased public safety, we have installed pipeline markers which show the approximate location of our buried pipelines. These markers are installed at public road and rail crossings, and along the entire length of our pipelines.

EMERGENCY CONTACT:

1-866-688-9685

PRODUCTS/DOT GUIDEBOOK ID#/GUIDE#:

Crude Oil	1267	128
Natural Gas	1971	115
Natural Gas Liquids	1972	115

TEXAS

COUNTIES OF OPERATION:

Coke	Nolan
Crockett	Reagan
Glasscock	Sterling
Irion	Tom Green
Mitchell	Upton

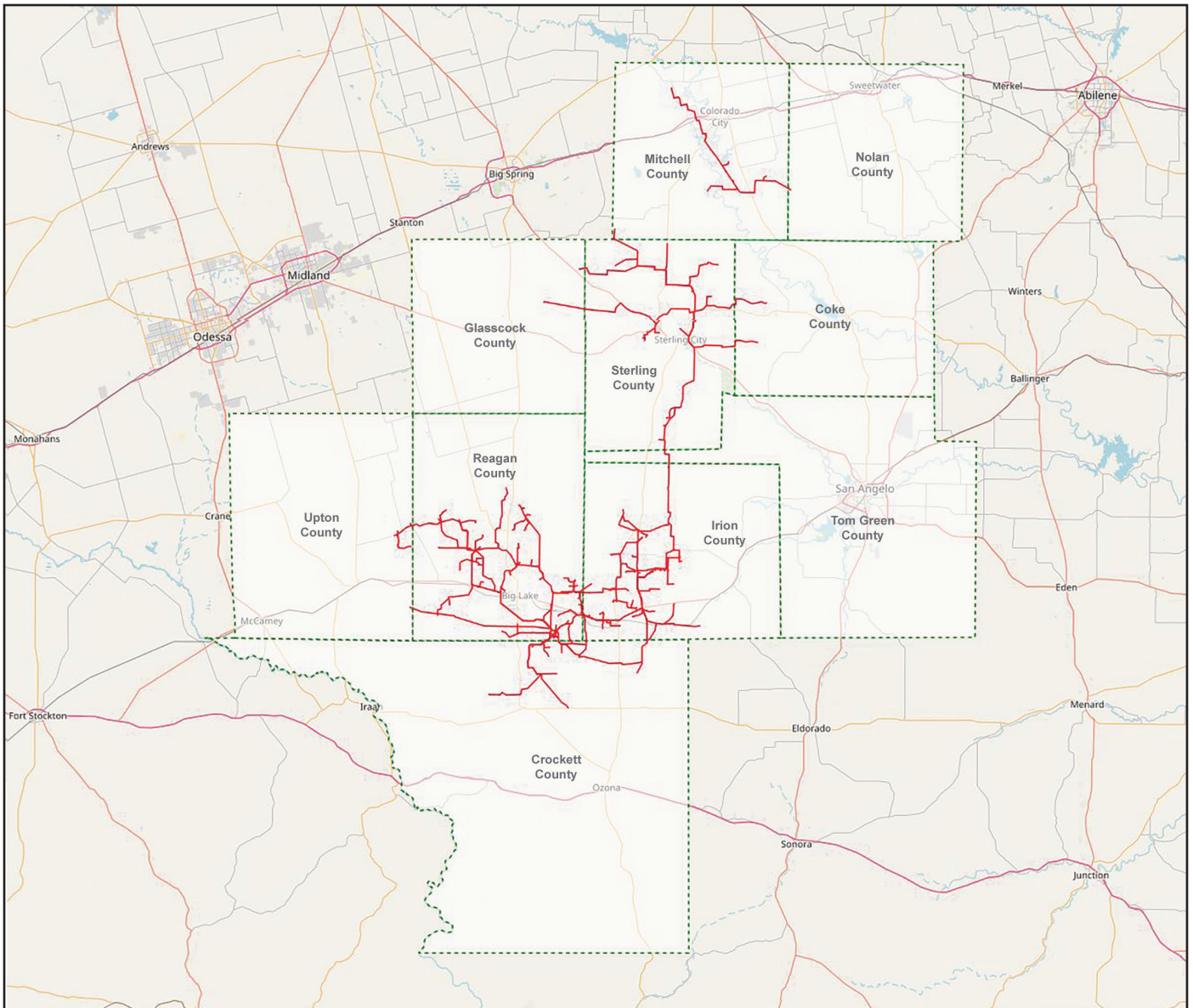
Changes may occur. Contact the operator to discuss their pipeline systems and areas of operation.

HOW TO GET ADDITIONAL INFORMATION

For additional information or an overview of Canes Midstream's IMP contact contact Jason Bohn at 1-325-899-4512 or email at jbohn@Canesmidstream.com.

PRODUCT	LEAK TYPE	VAPORS
HIGHLY VOLATILE LIQUIDS [SUCH AS: BUTANE, PROPANE, ETHANE, PROPYLENE, AND NATURAL GAS LIQUIDS (NGL)]	Gas	Initially heavier than air, spread along ground and may travel to source of ignition and flash back. Product is colorless, tasteless and odorless.
HEALTH HAZARDS		Will be easily ignited by heat, sparks or flames and will form explosive mixtures with air. Vapors may cause dizziness or asphyxiation without warning and may be toxic if inhaled at high concentrations. Contact with gas or liquefied gas may cause burns, severe injury and/or frostbite. Fire may produce irritating and/or toxic gases.
HAZARDOUS LIQUIDS [SUCH AS: CRUDE OIL, DIESEL FUEL, JET FUEL, GASOLINE, AND OTHER REFINED PRODUCTS]	Liquid	Initially heavier than air and spread along ground and collect in low or confined areas. Vapors may travel to source of ignition and flash back. Explosion hazards indoors, outdoors or in sewers.
HEALTH HAZARDS		Inhalation or contact with material may irritate or burn skin and eyes. Fire may produce irritating, corrosive and/or toxic gases. Vapors may cause dizziness or suffocation. Runoff from fire control or dilution water may cause pollution.
NATURAL GAS	Gas	Lighter than air and will generally rise and dissipate. May gather in a confined space and travel to a source of ignition.
HEALTH HAZARDS		Will be easily ignited by heat, sparks or flames and will form explosive mixtures with air. Vapors may cause dizziness or asphyxiation without warning and may be toxic if inhaled at high concentrations. Contact with gas or liquefied gas may cause burns, severe injury and/or frostbite.

Canes Midstream



Canes Midstream LLC - Regulated Pipeline Assets

Base map courtesy of openstreetmap.org