



930 W. 1st Street, Suite 400
 Fort Worth, TX 76102
 Phone: (682) 348-7500
 info@clearforkmidstream.com
 Website: www.clearforkmidstream.com

WHO IS CLEARFORK MIDSTREAM

Clearfork Midstream is a Fort Worth, Texas-based midstream company primarily focused on the development of natural gas gathering, treating, and transportation assets in the Haynesville/Bossier shale. Clearfork manages more than 400 miles of pipelines and 1.2 billion cubic feet per day of treating capacity across two systems in North Louisiana and East Texas. TGG Shelby Assets, LLC operates assets in Texas and TGG Pipeline Ltd operates assets in Louisiana.

WHAT ARE THE SIGNS OF A NATURAL GAS PIPELINE LEAK?

- Blowing or hissing sound
- Dust blowing from a hole in the ground
- Continuous bubbling in wet or flooded areas
- Gaseous or hydrocarbon odor
- Dead or discolored vegetation in a green area
- Flames, if a leak has ignited

WHAT SHOULD I DO IF I SUSPECT A PIPELINE LEAK?

Your personal safety should be your first concern:

- Evacuate the area and prevent anyone from entering
- Abandon any equipment being used near the area
- Avoid any open flames
- Avoid introducing any sources of ignition to the area (such as cell phones, pagers, 2-way radios)
- Do not start/turn off motor vehicles/electrical equipment
- Call 911 or contact local fire or law enforcement
- Notify the pipeline company
- Do not attempt to extinguish a natural gas fire
- Do not attempt to operate any pipeline valves

PIPELINE SAFETY

System failures occur infrequently along the nation’s network of interstate natural gas pipeline facilities, and many of these are caused by damage from others digging near the pipeline. We watch for unauthorized digging, but we request your help to notify us.

We participate in One-Call Centers and strongly encourage those who are going to dig to call their state One-Call Center or the 811 “Call before you dig” hotline (see below) to allow pipeline companies and owners of other buried utilities a chance to mark the underground facilities in the area before digging begins.

You can also find out where other companies’ pipelines are in your area by going to the National Pipeline Mapping System website at www.npms.phmsa.dot.gov.

PIPELINE LOCATION AND MARKERS

Pipeline markers are used to indicate the approximate location of a natural gas pipeline and to provide contact information. Aerial patrol planes also use the markers to identify the pipeline route. Markers should never be removed or relocated by anyone other than a pipeline operator.



EMERGENCY CONTACT:

1-903-935-2333

PRODUCTS/ DOT GUIDEBOOK ID#/ GUIDE#:

Natural Gas 1971 115

TEXAS COUNTIES OF OPERATION:

Nacogdoches Panola
 San Augustine Shelby

LOUISIANA PARISHES OF OPERATION:

Caddo Red River
 De Soto

Changes may occur. Contact the operator to discuss their pipeline systems and areas of operation.

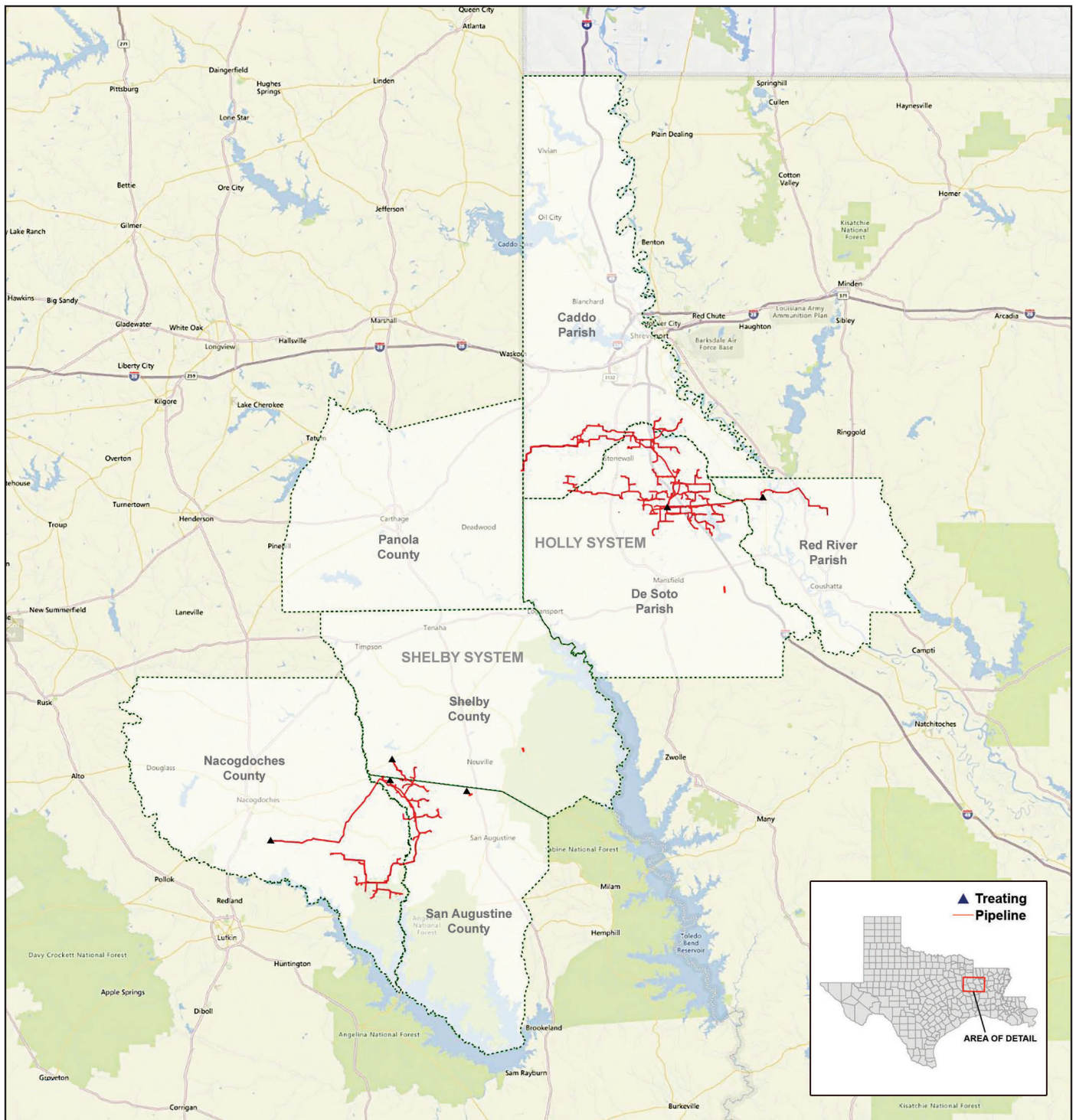
EMERGENCY RESPONSE PLANS

An Emergency Response Plan is developed for each pipeline facility to contain, control and mitigate the various types of emergency conditions/ situations that could occur at one of our facilities. For more information regarding Clearfork Midstream’s emergency response plans and procedures, contact us directly.



**Know what's below.
 Call before you dig.**

Clearfork Midstream



Base map courtesy of openstreetmap.org