



Eagle Oil and Gas Co.
 2525 Kell Blvd Ste 510
 Wichita Falls, TX 76308
 Dallas Office: 214-369-1545
 Wichita Falls Office: 940-723-7322
 Website: www.eagleog.com

ABOUT EAGLE OIL AND GAS CO.

Eagle Oil and Gas Co. (Eagle) is a private independent oil and gas company based in Dallas, TX.

WHAT ARE THE SIGNS OF A NATURAL GAS PIPELINE LEAK?

- Blowing or hissing sound
- Dust blowing from a hole in the ground
- Continuous bubbling in wet or flooded areas
- Gaseous or hydrocarbon odor
- Dead or discolored vegetation in a green area
- Flames, if a leak has ignited

WHAT SHOULD I DO IF I SUSPECT A PIPELINE LEAK?

Your personal safety should be your first concern:

- Evacuate the area and prevent anyone from entering
- Abandon any equipment being used near the area
- Avoid any open flames
- Avoid introducing any sources of ignition to the area (such as cell phones, pagers, 2-way radios)
- Do not start/turn off motor vehicles/ electrical equipment
- Call 911 or contact local fire or law enforcement
- Notify the pipeline company
- Do not attempt to extinguish a natural gas fire
- Do not attempt to operate any pipeline valves

WHAT DOES EAGLE OIL AND GAS CO. DO IF A LEAK OCCURS?

To prepare for the event of a leak, Eagle regularly communicates, plans and trains with local emergency responders. Upon the notification of an incident or leak, Eagle will immediately dispatch trained personnel to assist emergency responders. Eagle and emergency responders are trained to protect life, property and facilities in the case of an emergency. Eagle will also take steps to minimize the amount of product that leaks out and to isolate the pipeline emergency.

MAINTAINING SAFETY AND INTEGRITY OF PIPELINES

Eagle invests significant time and capital maintaining the quality and integrity of their pipeline systems. Eagle also utilizes leak surveys and on-ground observers to identify potential dangers. Pipeline personnel continually monitor the pipeline system and assess changes in pressure and flow. They notify field personnel if there is a possibility of a leak. Automatic shut-off valves are sometimes utilized to isolate a leak.



**EMERGENCY CONTACT:
 1-800-753-7322**

PRODUCTS/ DOT GUIDEBOOK ID#/ GUIDE#:		
Natural Gas	1971	115

**TEXAS
 COUNTIES OF OPERATION:**

Cherokee	Smith
Robertson	

Changes may occur. Contact the operator to discuss their pipeline systems and areas of operation.

PIPELINE LOCATION AND MARKERS

Pipeline markers are used to indicate the approximate location of a natural gas pipeline and to provide contact information. Aerial patrol planes also use the markers to identify the pipeline route. Markers should never be removed or relocated by anyone other than a pipeline operator.

ALWAYS CALL 811

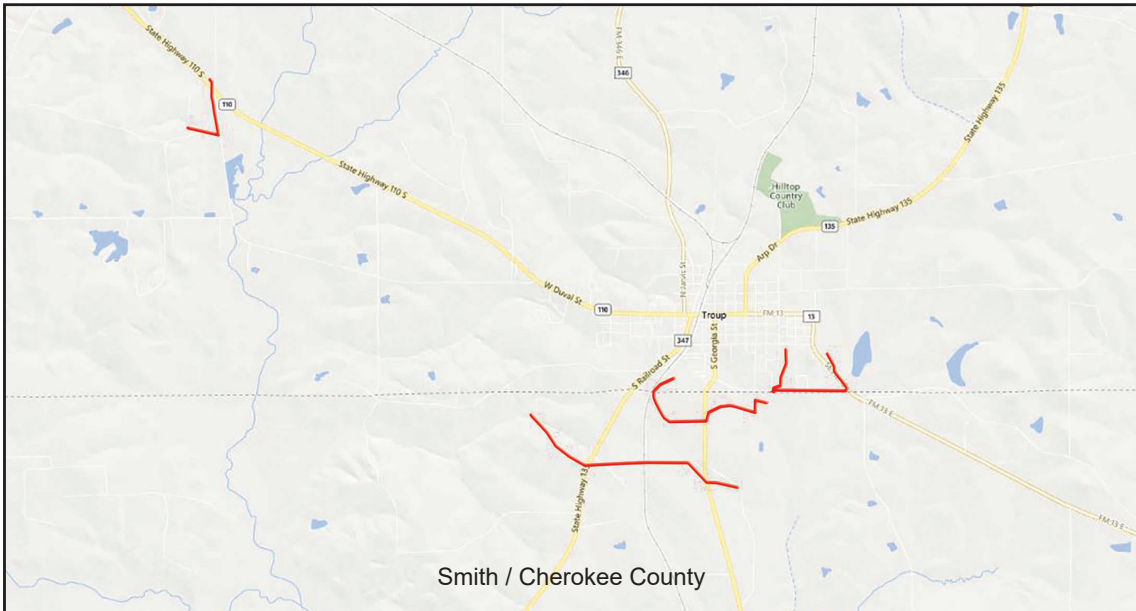
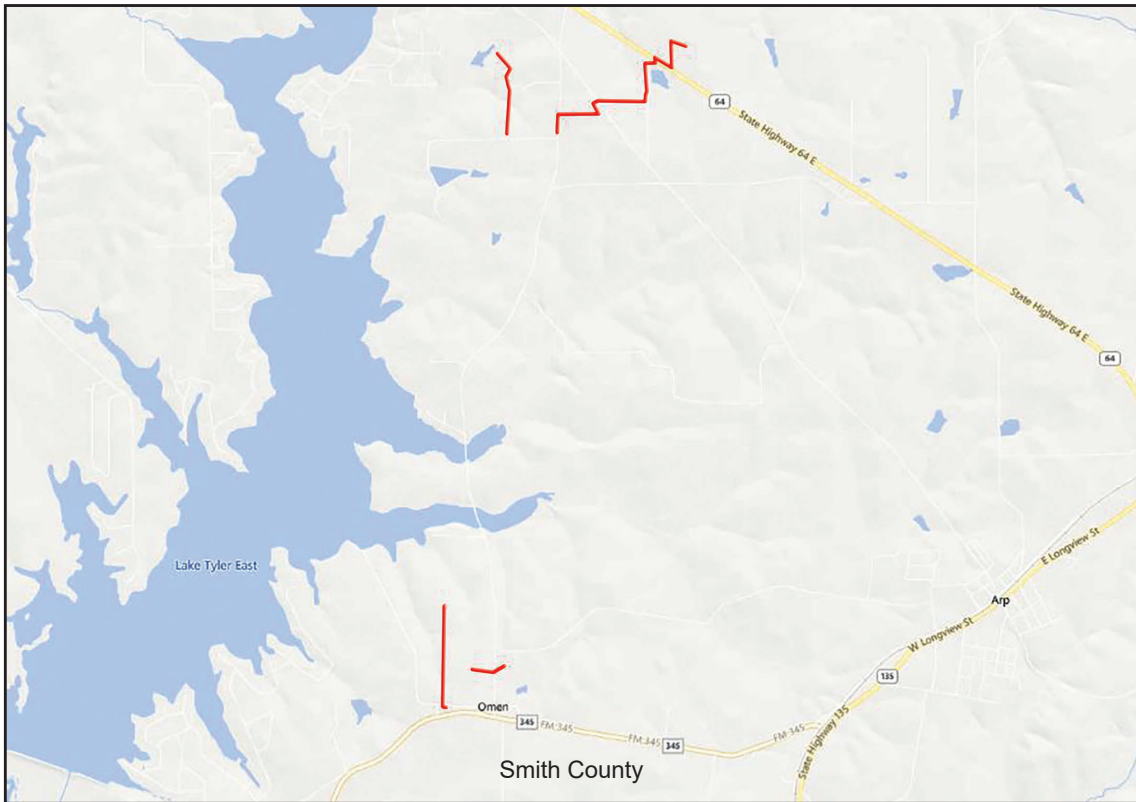
Always remember to call 811 Before You Dig! You can contact Texas811 by simply dialing 811 or 1-800-344-8377. You can also submit locate requests on-line and for additional information please visit <https://www.texas811.org/> In the event of an emergency, please call 1-800-753-7322.

HOW TO GET ADDITIONAL INFORMATION

For more information regarding Eagle's emergency response plans and procedures, contact us at marvin@eagleog.com.
 Dallas Office: 214-369-1545
 Wichita Falls Office: 940-723-7322.

PRODUCTS TRANSPORTED AND COUNTIES INVOLVED

Product	Description	Health and Fire Hazards	Counties Involved
Natural Gas	Leak Type: Gas Vapor: Lighter than Air Very flammable and a white vapor cloud may be visible near the site of a leak.	Health: Extremely high concentrations may cause irritation or asphyxiation. Possible presence of H2S, a toxic gas. Fire Hazards: Extremely flammable and easily ignited by heat, sparks or flames.	Cherokee Robertson Smith



Base maps courtesy of openstreetmap.org