



Main Phone: (210) 920-2255  
 Emergency Phone: (888) 762-3811  
 Website: www.epicpipelinehelp.com

**ABOUT EPIC CONSOLIDATED OPERATIONS, LLC**

EPIC Consolidated Operations, LLC (EPIC) operates crude oil and NGL pipeline that extends from West Texas to South Texas. In addition, EPIC operates pipeline in the South Texas Gulf Coast area that carry ethane, ethylene, propane, isobutane, butane, C5+ and natural gasoline.

**WHAT DOES EPIC CONSOLIDATED OPERATIONS, LLC DO IF A LEAK OCCURS?**

**PROTECT LIFE**

- Follow Emergency Response Plan(s), as applicable
- Evacuate personnel and public to a safe point and isolate area
- Provide safe rescue of personnel
- Provide first aid: Call EMS
- Transport

**MITIGATE SITUATION**

- Shut off hazardous energy sources
- Find closest valve to limit fuel to site
- Call appropriate agencies

**COMMUNICATE UP**

- Employees - inform supervisors of emergency
- Supervisors - assess the situation and keep lines of communication open to both on-site employees and operations management
- Provide input regarding the need for additional personnel, technical services, contract specialists, etc.
- Notify corporate management as appropriate as well as the Safety/ Environmental Specialist

**SECURE SITE**

- Control traffic
- Set up safe perimeter/evaluate wind (use gas detection meter)
- Cooperate with law enforcement and appropriate agencies
- Refer media to spokesperson

**MAINTAINING SAFETY AND INTEGRITY OF PIPELINES**

EPIC Consolidated Operations, LLC invests significant time and capital maintaining the quality and integrity of their pipeline system. Active pipelines are monitored 24 hours a day via manned control centers. EPIC Consolidated Operations, LLC actively participates in Texas811, a qualified one-call center. EPIC Consolidated Operations, LLC also utilizes aerial surveillance and/or on- ground observers to identify potential dangers. Control center personnel continually monitor the pipeline system and assess changes in pressure and flow. They notify field personnel if there is a possibility of a leak. Automatic shut-off valves are sometimes utilized to isolate a leak.

For information on affected HCA segments or EPIC's Integrity Management Plan please contact Matt Warren at matt.warren@epicmid.com or Norm Racicot at normand.racicot@epicmid.com.



**HIGHLY VOLATILE LIQUIDS [SUCH AS NATURAL GAS LIQUIDS (NGL)]**

including Natural Gasoline, Ethane, Ethylene, Propane, Isobutane, Butane and C5+: Products leak as liquid or gas. Initially heavier than air, spread along ground and may travel to source of ignition and flash back. Product is colorless, tasteless and odorless. Will be easily ignited by heat, sparks

**EMERGENCY CONTACT:**

1-888-762-3811

**PRODUCTS/DOT GUIDEBOOK ID#/GUIDE#:**

Crude Oil	1267	128
Natural Gas Liquids	1971	115
Propane	1971	115
Ethane	1170	127
Ethylene	1962	116P
Isobutane	1969/1075	115
Butane	1011/1075	115
C5+	1265	128

**TEXAS**

**COUNTIES OF OPERATION:**

Bee	Matagorda
Bexar	Maverick
Brazoria	McMullen
Calhoun	Nueces
Chambers	Pecos
Crane	Reagan
Crockett	Reeves
Culberson	Refugio
Dimmit	San Patricio
Duval	Schleicher
Edwards	Sutton
Harris	Upton
Jackson	Victoria
Jim Wells	Ward
Karnes	Wilson
Kinney	Winkler
La Salle	Zavala

**NEW MEXICO**

**COUNTIES OF OPERATION:**

Eddy

*Changes may occur. Contact the operator to discuss their pipeline systems and areas of operation.*

or flames and will form explosive mixtures with air. Vapors may cause dizziness or asphyxiation without warning and may be toxic if inhaled at high concentrations. Contact with gas or liquefied gas may cause burns, severe injury and/or frostbite. Fire may produce irritating and/or toxic gases. Natural gasoline is a natural gas liquid with a vapor pressure intermediate between natural gas condensate (drip

# EPIC Consolidated Operations, LLC

gas) and liquefied petroleum gas and has a boiling point within the range of gasoline. The typical gravity of natural gasoline is around 80 API.

## HAZARDOUS LIQUIDS [SUCH AS CRUDE OIL]:

Product leaks as liquid. Initially heavier than air and spread along ground and collect in low or confined areas. Vapors may travel to source of ignition and flash back. Explosion hazards indoors,

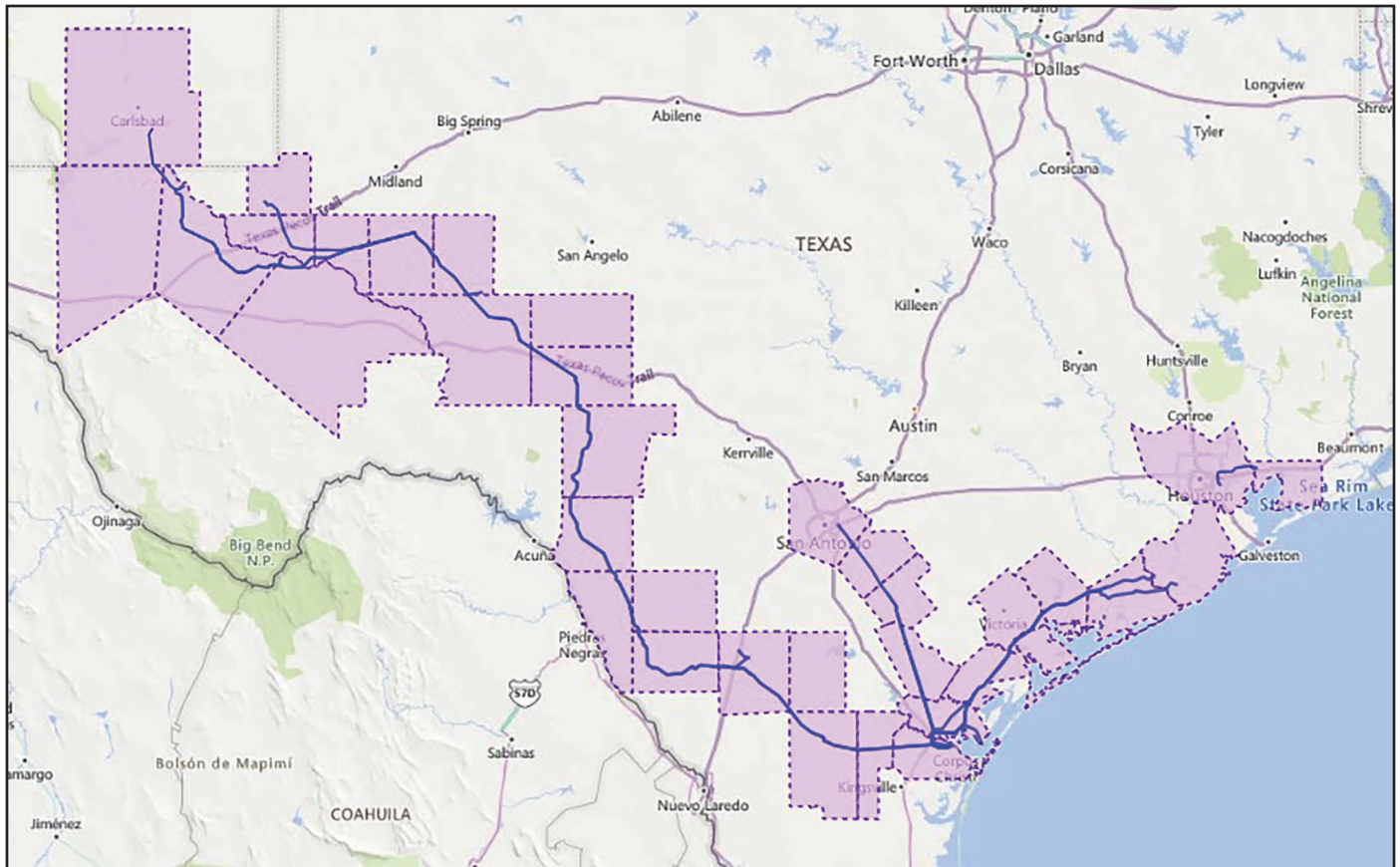
outdoors or in sewers. Inhalation or contact with material may irritate or burn skin and eyes. Fire may produce irritating, corrosive and/or toxic gases. Vapors may cause dizziness or suffocation. Runoff from fire control or dilution water may cause pollution.

## HOW TO GET ADDITIONAL INFORMATION

For additional information about EPIC Consolidated Operations, LLC, or our

operations, go to [www.epicpipeline.com](http://www.epicpipeline.com) or contact David McArthur at 210-446-1059.

For information on affected HCA segments or EPIC's Integrity Management Plan please contact Matt Warren at [matt.warren@epicmid.com](mailto:matt.warren@epicmid.com) or Norm Racicot at [normand.racicot@epicmid.com](mailto:normand.racicot@epicmid.com).



Pipelines are between 4" - 30" in diameter