



ABOUT IRONWOOD MIDSTREAM ENERGY PARTNERS LLC

Crude Oil Gathering System located in Karnes, La Salle and Midland Counties.

WHAT DOES IRONWOOD MIDSTREAM ENERGY PARTNERS LLC DO IF A LEAK OCCURS?

PROTECT LIFE

- Follow Emergency Response Plans, if applicable
- Evacuate personnel and public to a safe point and isolate area
- Provide safe rescue of personnel
- Provide first aid: Call EMS
- Transport

MITIGATE SITUATION

- Shut off hazardous energy sources
- Find closest valve to limit fuel to site
- Call appropriate agencies

COMMUNICATE UP

- Employees - inform supervisors of emergency
- Supervisors - assess the situation and keep lines of communication open to both on-site employees and operations management
- Provide input regarding the need for additional personnel, technical services, contract specialists, etc.
- Notify corporate management as appropriate as well as the Safety/ Environmental Specialist

SECURE SITE

- Control traffic
- Set up safe perimeter/evaluate wind (use gas detection meter)
- Cooperate with law enforcement and appropriate agencies
- Refer media to spokesperson

MAINTAINING SAFETY AND INTEGRITY OF PIPELINES

Ironwood Midstream Energy Partners LLC invests significant time and capital maintaining the quality and integrity of their pipeline system. Active pipelines are monitored 24 hours a day via manned control centers.

Ironwood Midstream Energy Partners LLC actively participates in Texas811, a qualified one-call center. Ironwood Midstream Energy Partners LLC also utilizes aerial surveillance and/or on-ground observers to identify potential dangers. Control center personnel continually monitor the pipeline system and assess changes in pressure and flow. They notify field personnel if there is a possibility of a leak. Automatic shutoff valves are sometimes utilized to isolate a leak.

HOW TO GET ADDITIONAL INFORMATION

For additional information about Ironwood Midstream Energy Partners LLC, visit www.ironwoodmidstream.com or contact us directly.

For information on affected HCA segments or Ironwood's Integrity Management Plan contact Geron Hendrickson at geron.hendrickson@ironwoodmidstream.com.

PRODUCTS TRANSPORTED IN YOUR AREA

PRODUCT:	CRUDE OIL [HAZARDOUS LIQUID]
LEAK TYPE:	Liquid
VAPORS:	Initially heavier than air and spread along ground and collect in low or confined areas. Vapors may travel to source of ignition and flash back. Explosion hazards indoors, outdoors or in sewers.
HEALTH HAZARDS:	Inhalation or contact with material may irritate or burn skin and eyes. Fire may produce irritating, corrosive and/or toxic gases. Vapors may cause dizziness or suffocation. Runoff from fire control or dilution water may cause pollution.

EMERGENCY CONTACT:
1-877-344-1339

PRODUCTS/DOT GUIDEBOOK ID#/GUIDE#:

Crude Oil	1267	128
-----------	------	-----

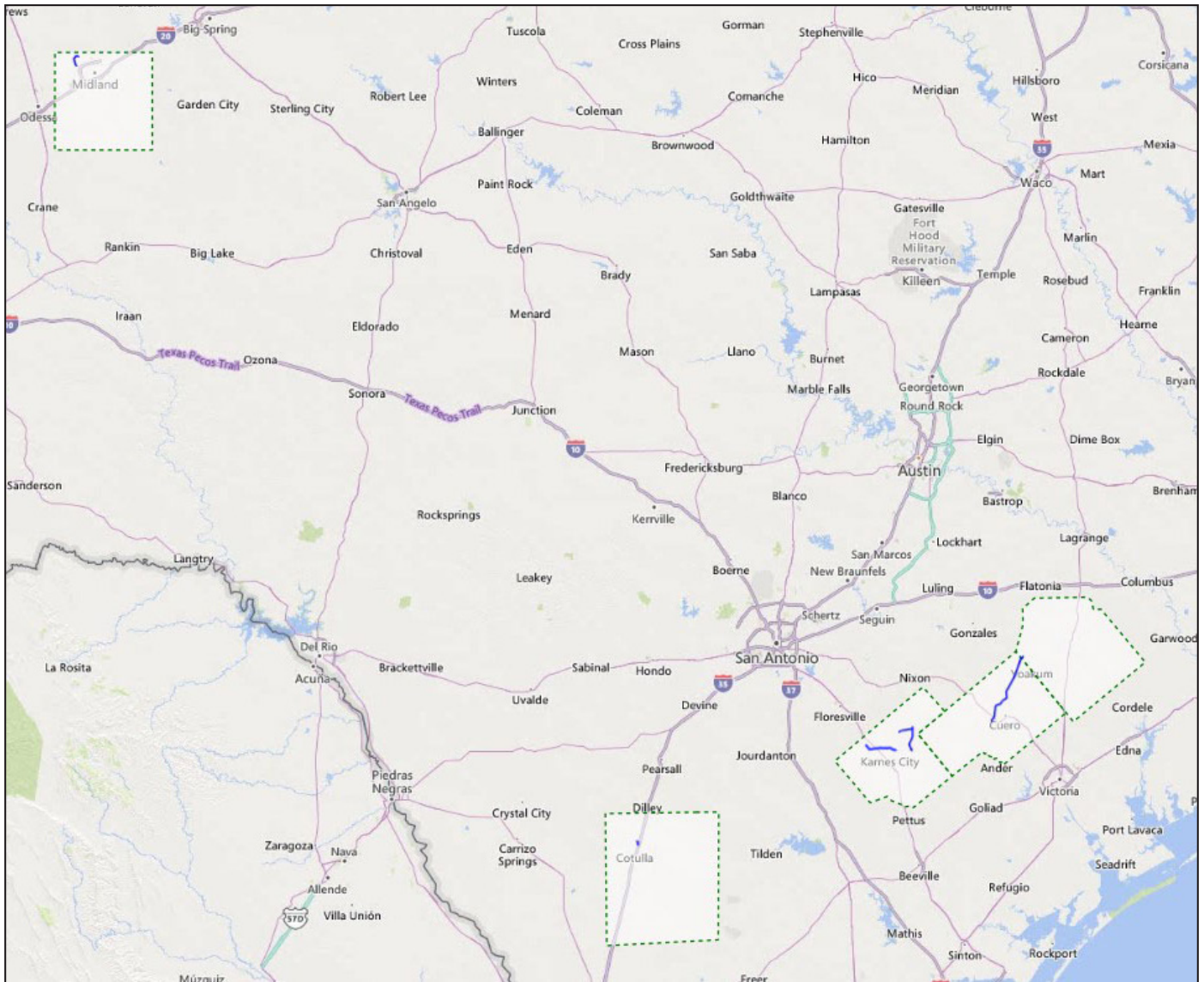
TEXAS COUNTIES OF OPERATION:

DeWitt	La Salle
Karnes	Midland
Lavaca	

Changes may occur. Contact the operator to discuss their pipeline systems and areas of operation.



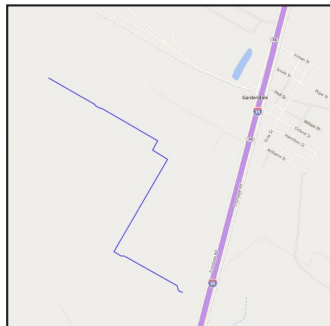
Ironwood Midstream Energy Partners LLC



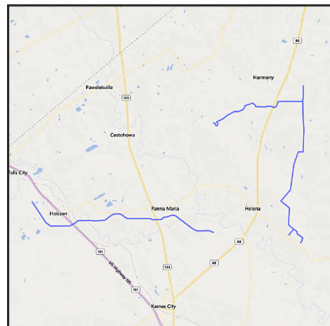
Pipelines are between 4" - 12" in diameter



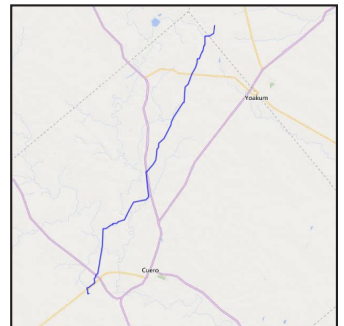
Midland County



La Salle County



Karnes County



Lavaca & DeWitt Counties