



ABOUT KETJEN

Pipeline product:
 Anhydrous Hydrogen Chloride (HCL)
 Pipeline information: 2.6 mile pipeline
 running between Oxy VCM and the
 Ketjen facility.

WHAT DOES KETJEN DO IF A LEAK OCCURS?

In the event of a pipeline leak or other incident, we have a well-trained operating group and emergency response team that respond to pipeline emergencies.

MAINTAINING SAFETY AND INTEGRITY OF PIPELINES

Ketjen is a member of CIMA (Channel Industries Mutual Aid Association), which allows us to call on extraordinary emergency response resources from our industrial neighbors where necessary. Our personnel electronically monitor the pipeline pressures continuously. In the event of an emergency, our operators can close pipeline isolation valves remotely to minimize releases or other emergencies. Ketjen uses CAER Alerts for Integrity Management Communication, these alerts will be recorded on the CAER hotline. The East Harris County Manufacturers Association (EHCMA) established the CAER (Community Awareness Emergency Response) Line in 1986 as a public service to provide information about industrial events. Callers may dial 281-476-2237 (CAER) or 281-476-2273 (CARE) to hear recorded emergency event information.

PRODUCTS TRANSPORTED IN YOUR AREA

Product: Anhydrous Hydrogen Chloride

Leak Type: Gas

Vapors: Vapors from liquefied gas are initially heavier than air and spread along ground. Some materials may react violently with water.

Health Hazards: Vapors are extremely irritating and corrosive. Vapors may be fatal if inhaled, ingested or absorbed through skin. Contact with gas or liquefied gas may cause burns, severe injury and/or frostbite. Fire may produce irritating, corrosive and/or toxic gases.

HOW TO GET ADDITIONAL INFORMATION

For additional information about Ketjen go to www.ketjen.com or contact us at 713-740-1000.

**EMERGENCY CONTACT:
 1-713-740-1155**

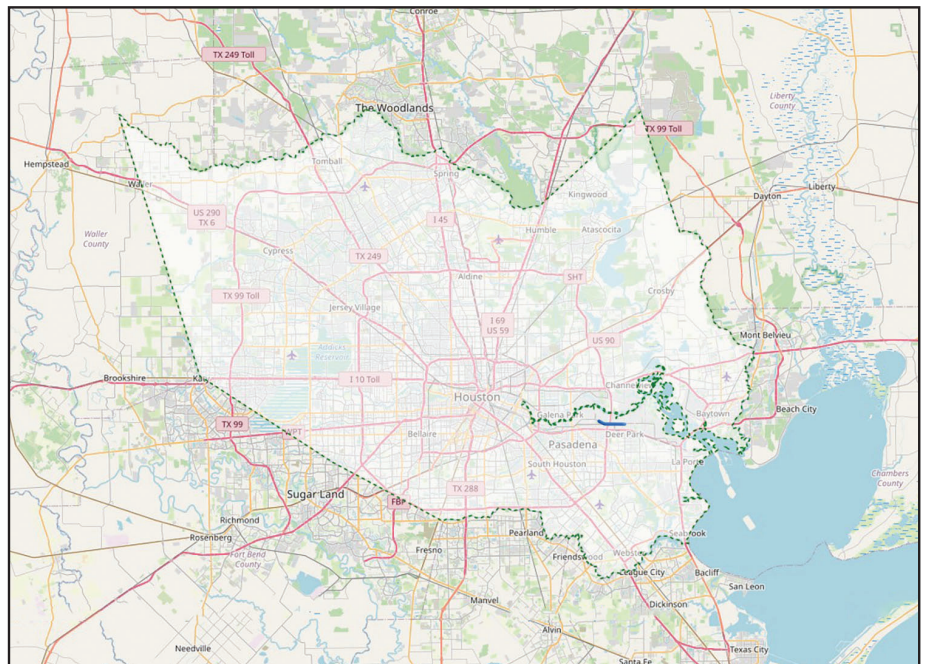
PRODUCTS / DOT GUIDEBOOK ID# / GUIDE#:

Anhydrous		
Hydrogen Chloride	1050	125

**TEXAS
 COUNTIES OF OPERATION:**

Harris

Changes may occur. Contact the operator to discuss their pipeline systems and areas of operation.



Base map courtesy of openstreetmap.org