



**ABOUT NRG MAINTENANCE SERVICES LLC**

NRG Maintenance Services LLC (NRG), headquartered in Houston TX, is an electric power generation company that operates a 0.3 mile pipeline in Fort Bend County, TX. NRG Maintenance Services LLC employees operate the pipeline that is located near Richmond TX. The Petra Nova CCS Pipeline operated by NRG Maintenance Services LLC is comprised of one Liquid CO2 Pipeline used to transport CO2 recovered from the W A Parish Electric Generation Plant. The CO2 is delivered to the TCV Pipeline, LLC (Owned by Texas Coastal Ventures, LLC) and managed by Hilcorp Energy. NRG Maintenance Services LLC monitors its pipeline system with a SCADA system that notifies employees when the system operates outside normal parameters. Field personnel patrol the system daily and respond to alarms 24 hours a day.

**EMERGENCY CONTACT:  
1-713-537-2544**

**PRODUCTS / DOT GUIDEBOOK ID# / GUIDE#:**  
Carbon Dioxide 1013 120

**TEXAS  
COUNTIES OF OPERATION:**

Fort Bend

*Changes may occur. Contact the operator to discuss their pipeline systems and areas of operation.*

**WHAT DOES NRG DO IF A LEAK OCCURS?**

NRG safety policy calls for the pipeline to be shut down if it is running with a known leak. Double block and bleed procedures are used to isolate the leak before pipe purging and repair can begin.

**HOW TO GET ADDITIONAL INFORMATION**

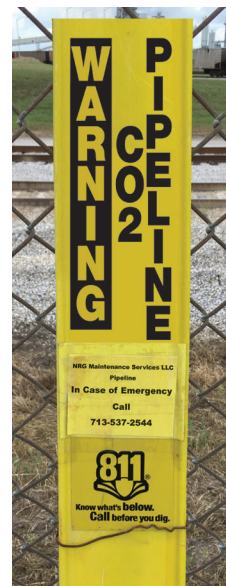
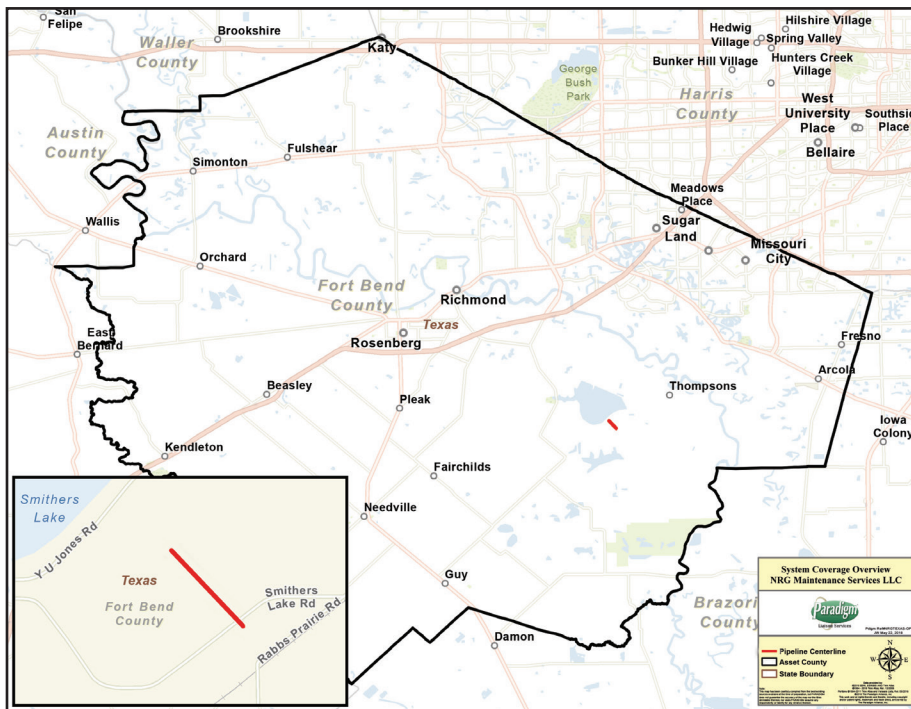
For an overview of NRG, go to [www.nrgenergy.com](http://www.nrgenergy.com) or contact us at 713-537-2544.

**PRODUCTS TRANSPORTED**

PRODUCT	LEAK TYPE	VAPORS
PURITY LIQUID CO2	Vapor Cloud	High concentrations of this gas can also cause an oxygen-deficient environment. However, the asphyxiating properties of Carbon Dioxide will be reached before oxygen-deficiency is a factor.
<b>HEALTH HAZARDS</b>	Contact of the cold gas with the skin can lead to frostbite or dermatitis (red, cracked, irritated skin), depending upon concentration and duration of exposure. Contact of the cold gas, or solid dry ice with the eyes can cause pain, redness, burns, and severe exposure could cause blindness.	

**MAINTAINING SAFETY AND INTEGRITY OF PIPELINES**

Liquid pipelines are monitored 24 hours a day via manned control centers.



CCS Pipeline Header: 16" [1,950 psi]