



**WHO IS NOBLE MIDSTREAM PARTNERS**

Noble Midstream Partners is a growth-oriented master limited partnership formed by Noble Energy to own, operate, develop and acquire midstream infrastructure assets. Our assets reside in two of the most resilient oil basins in the United States: the DJ Basin in Colorado and the Delaware Basin in Texas. In these areas, we provide crude oil, natural gas and water-related midstream services for Noble Energy and third parties.

If you observe any unusual or suspicious activity near our pipeline facilities or in the unlikely event an emergency occurs, please call us at any time using one of the numbers listed in this document.

For more information, contact Noble Midstream Partners at 970-304-5363.

**WHAT SHOULD I DO IF I SUSPECT A PIPELINE LEAK?**

Your personal safety should be your first concern:

- Evacuate the area and prevent anyone from entering
- Abandon any equipment being used near the area
- Avoid any open flames
- Avoid introducing any sources of ignition to the area (such as cell phones, pagers, 2-way radios)
- Do not start/turn off motor vehicles/ electrical equipment
- Call 911 or contact local fire or law enforcement
- Notify the pipeline company
- Do not attempt to extinguish a fire
- Do not attempt to operate any pipeline valves

**PIPELINE SAFETY**

System failures occur infrequently along the nation’s network of interstate natural gas pipeline facilities, and many of these are caused by damage from others digging near the pipeline. We watch for unauthorized digging, but we request your help to notify us.

**ALWAYS CALL 811 BEFORE YOU DIG!**

**PIPELINE LOCATION AND MARKERS**

Pipeline markers are used to indicate the approximate location of pipelines and to provide contact information. Aerial patrol also use the markers to identify the pipeline route. Markers should never be removed or relocated by anyone other than a pipeline operator.

You can also find out where other companies’ pipelines are in your area by going to the National Pipeline Mapping System website at <https://www.npms.phmsa.dot.gov/>.



**EMERGENCY CONTACT:  
1-866-662-5304**

**PRODUCTS/DOT GUIDEBOOK ID#/GUIDE#:**

Crude Oil	1267	128
Natural Gas	1971	115
NGL	1972	115

**TEXAS  
COUNTIES OF OPERATION:**

Crane	Ward
Pecos	Winkler
Reeves	

**COLORADO  
COUNTIES OF OPERATION:**

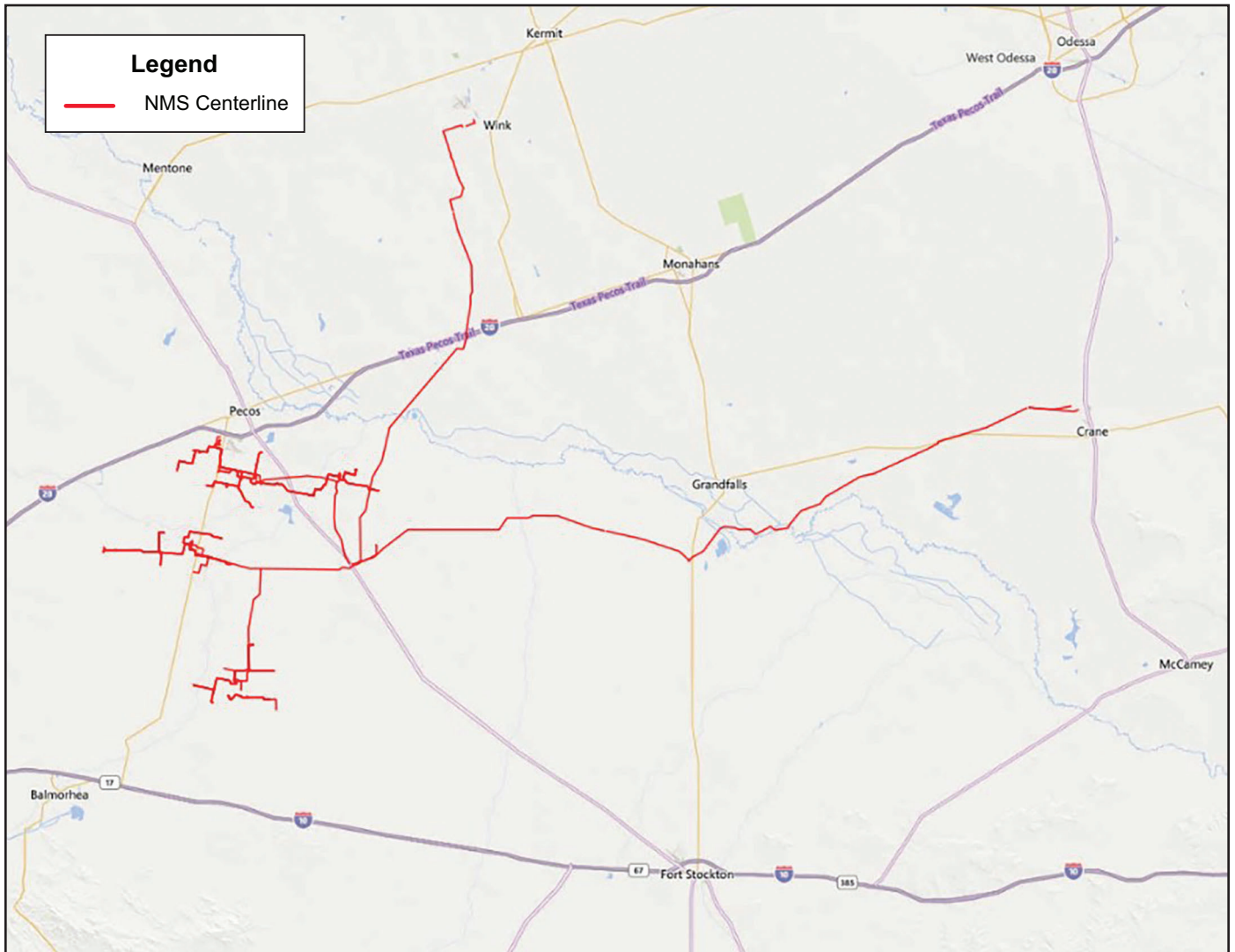
Broomfield	Rio Blanco
Larmer	Weld

*Changes may occur. Contact the operator to discuss their pipeline systems and areas of operation.*

**EMERGENCY RESPONSE PLANS**

An Emergency Response Plan is developed for each pipeline facility to contain, control and mitigate the various types of emergency conditions/ situations that could occur at one of our facilities. For more information regarding Noble Midstream Partner’s emergency response plans and procedures, contact us at 970-304-5363.





Pipeline size: 8 – 16 inches