



ABOUT ORX RESOURCES, L.L.C.

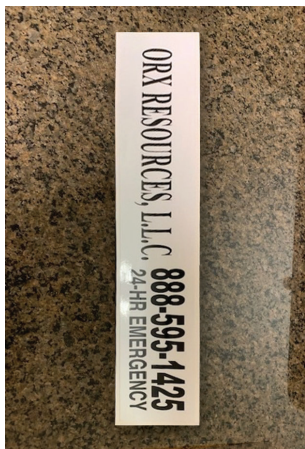
ORX Resources, L.L.C. (ORX) headquartered in Livonia, LA is a production company with gathering natural gas pipelines in Hidalgo, Nueces and San Jacinto Counties, Texas. See maps below and on the following page for more information about the pipelines. Each pipeline operates at 1000#.

WHAT DOES ORX RESOURCES, L.L.C. DO IF A LEAK OCCURS?

To prepare for the event of a leak, pipeline companies regularly communicate, plan and train with local emergency responders. Upon the notification of an incident or leak the pipeline company will immediately dispatch trained personnel to assist emergency responders.

Pipeline operators and emergency responders are trained to protect life, property and facilities in the case of an emergency.

Pipeline operators will also take steps to minimize the amount of product that leaks out and to isolate the pipeline emergency. ORX personnel will restrict the flow of product and implement other operating actions as needed to minimize the impact of the emergency. Public safety officials and other non-company personnel should not attempt to operate pipeline valves. Improper operation of pipeline valves can cause other accidents to occur.



MAINTAINING SAFETY AND INTEGRITY OF PIPELINES

ORX invests significant time and capital maintaining the quality and integrity of their pipeline systems. ORX also utilizes filed personnel to conduct continuous surveillance on the pipeline systems.

HOW TO GET ADDITIONAL INFORMATION

For additional information, contact us at 888-595-1425.

**EMERGENCY CONTACT:
(888) 595-1425**

PRODUCTS/ DOT GUIDEBOOK ID#/ GUIDE#:		
Natural Gas	1971	115

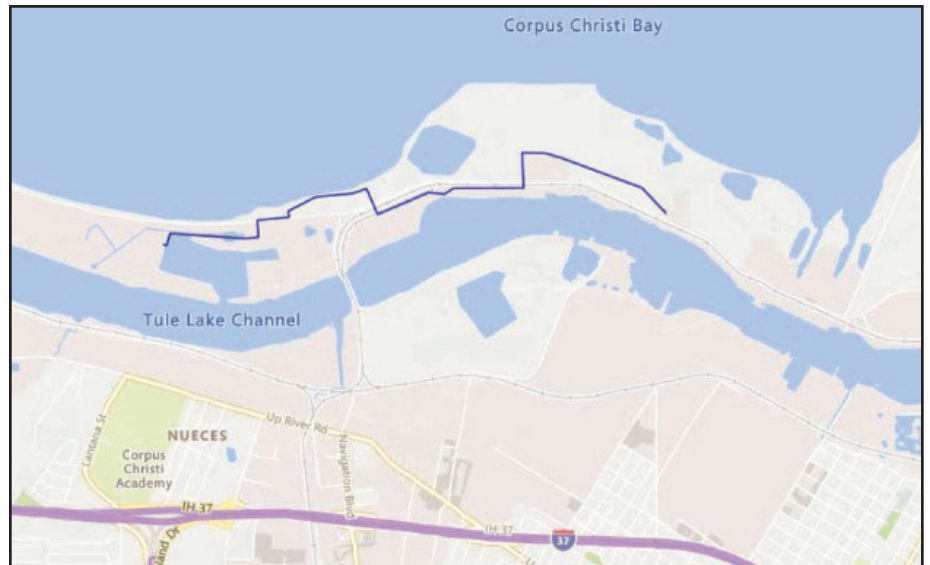
**TEXAS
COUNTIES OF OPERATION:**

Hidalgo	San Jacinto
Nueces	

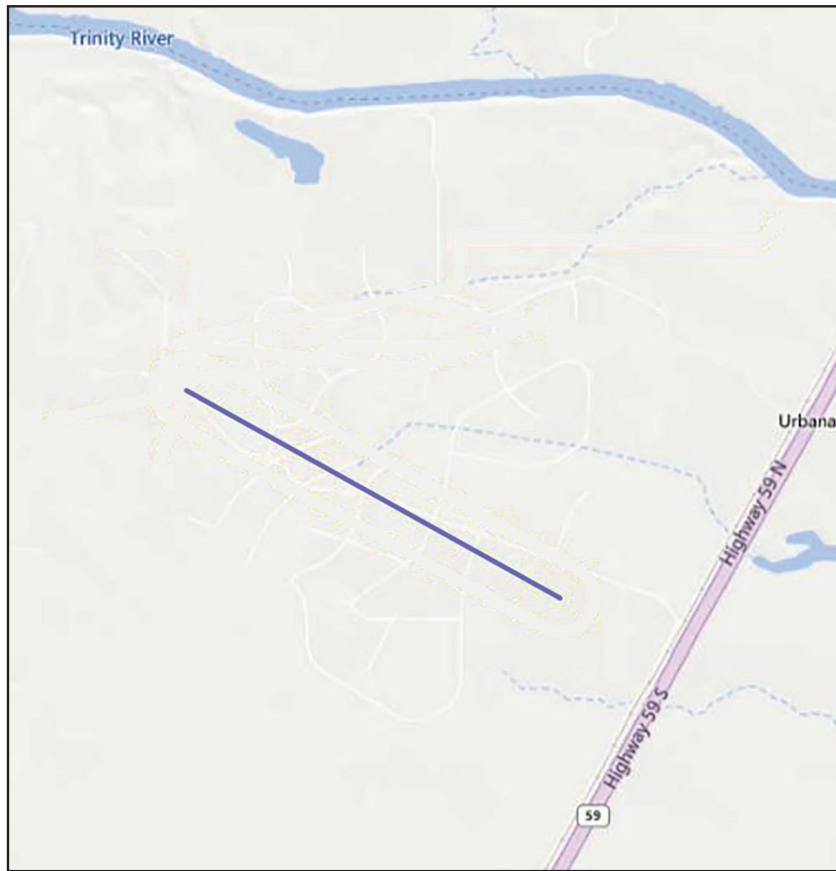
Changes may occur. Contact the operator to discuss their pipeline systems and areas of operation.

PRODUCTS TRANSPORTED

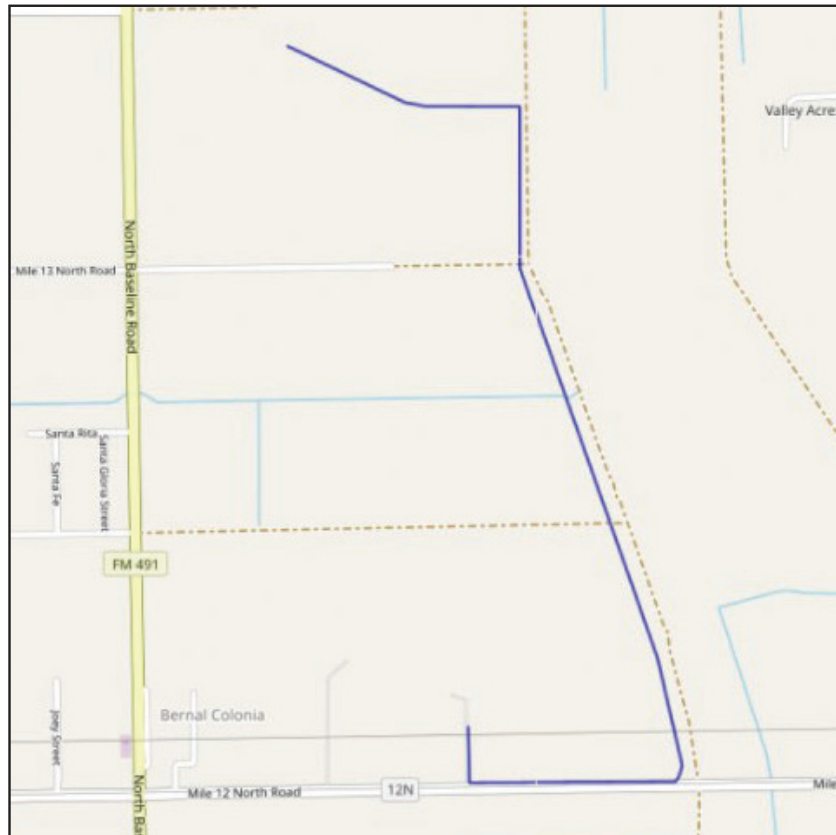
PRODUCT	LEAK TYPE	VAPORS
NATURAL GAS	Gas	Lighter than air and will generally rise and dissipate. May gather in a confined space and travel to a source of ignition.
HEALTH HAZARDS		Will be easily ignited by heat, sparks or flames and will form explosive mixtures with air. Vapors may cause dizziness or asphyxiation without warning and may be toxic if inhaled at high concentrations. Contact with gas or liquefied gas may cause burns, severe injury and/or frostbite.



The ST TR 750 A#1 Pipeline System is a Gathering Pipeline that is 8” in diameter in Nueces County.



The San Jacinto Gathering system is a 4.5" Gathering Pipeline.



The Schuster Pipeline System is a Gathering Pipeline that is 2" in diameter in Hidalgo County.