



6600 Upriver Road  
 Corpus Christi, TX 78409  
 Phone: 361-289-5500  
 Website: pinoakterminals.com  
 EMERGENCY: 844-905-0595  
 Email: info@pinoakgrp.com

**ABOUT POTAC**

Pin Oak owns and operates a network of integrated midstream assets offering multi-modal logistic solutions for the transportation, storage, and distribution of crude oil, refined products, and natural gas liquids. The Taft and Corpus Christi terminals and pipelines are operated by POTAC.

If you observe any unusual or suspicious activity near our pipeline facilities or in the unlikely event an emergency occurs, contact us directly.

More information on Pin Oak can be found at: pinoakterminals.com

**HOW WOULD YOU RECOGNIZE A PIPELINE LEAK?**

**Sight:** Continuous bubbling or blowing water in wet or flooded areas, oily or rainbow sheen on water surface, a pool of liquid on the ground, vaporous fogs or blowing dirt around a pipeline area or hole in the ground, dead or discolored plants in an otherwise healthy area, frozen ground in warm weather, and flames near a pipeline are all signs of a pipeline leak. Natural gas is colorless, but vapor and “ground frosting” may be visible at high pressures.

**Sound:** Volume can range from a quiet blowing or hissing to a loud roar.

**Smell:** A hydrocarbon or petroleum smell will sometimes accompany pipeline leaks. Natural Gas is colorless, tasteless and odorless unless commercial odorants or Mercaptan is added. Gas transmission/gas gathering pipelines are odorless, but may contain a hydrocarbon or petroleum smell.

**WHAT TO DO IN THE EVENT A LEAK WERE TO OCCUR:**

**Turn off** all equipment and eliminate any ignition sources without risking injury.

**Leave the area** by foot immediately. Try to direct any other bystanders to leave the area. Attempt to stay upwind.

From a safe location, notify Pin Oak immediately and call **911** or your local

emergency response number. Pin Oak and the 911 operator will need your name, your phone number, a brief description of the incident, and the location so the proper response can be initiated.



**PIPELINE LOCATION AND MARKERS**

Pipeline markers are used to indicate the approximate location of a natural gas pipeline and to provide contact information. Aerial patrol planes also use the markers to identify the pipeline route. Markers should never be removed or relocated by anyone other than a pipeline operator.

You can also find out where other companies’ pipelines are in your area by going to the National Pipeline Mapping System website at [www.npms.phmsa.dot.gov](http://www.npms.phmsa.dot.gov).

**EMERGENCY CONTACT:**  
**1-844-905-0595**

<b>PRODUCTS / DOT GUIDEBOOK ID# / GUIDE#:</b>		
Crude Oil	1267	128
Natural Gas	1917	115

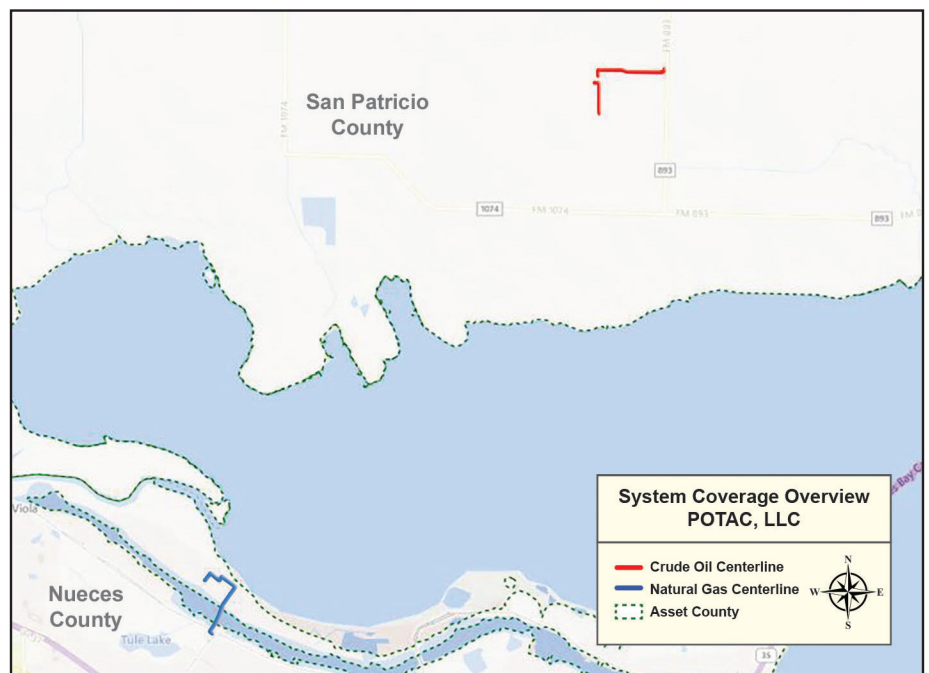
**TEXAS**  
**COUNTIES OF OPERATION:**

Nueces                      San Patricio

*Changes may occur. Contact the operator to discuss their pipeline systems and areas of operation.*

**EMERGENCY RESPONSE PLANS**

An Emergency Response Plan is developed for each pipeline facility to contain, control and mitigate the various types of emergency conditions/situations that could occur at one of our facilities. For more information regarding Pin Oaks emergency response plans and procedures, contact us directly.



Base map courtesy of openstreetmap.org