



**ABOUT PETRODOME OPERATING, LLC**

Petrodome Operating, LLC (Petrodome) headquartered in Houston, Texas is a production company gathering natural gas in Brooks, Hidalgo, Newton, Nueces, Orange and San Jacinto Counties, Texas.

**WHAT DOES PETRODOME OPERATING DO IF A LEAK OCCURS?**

To prepare for the event of a leak, pipeline companies regularly communicate, plan and train with local emergency responders. Upon the notification of an incident or leak the pipeline company will immediately dispatch trained personnel to assist emergency responders.

Pipeline operators and emergency responders are trained to protect life, property and facilities in the case of an emergency.

Pipeline operators will also take steps to minimize the amount of product that leaks out and to isolate the pipeline emergency. Petrodome personnel will restrict the flow of product and implement other operating actions as needed to minimize the impact of the emergency. Public safety officials and other non-company personnel should not attempt to operate pipeline valves. Improper operation of pipeline valves can cause other accidents to occur.



**MAINTAINING SAFETY AND INTEGRITY OF PIPELINES**

Petrodome invests significant time and capital maintaining the quality and integrity of their pipeline systems. Petrodome also utilizes on-ground observers to identify potential dangers. Gas transmission and gathering pipeline operators have developed supplemental hazard and assessment programs known as Integrity Management Programs (IMPs). Specific information about Petrodome’s program may be found by contacting us directly.

**HOW TO GET ADDITIONAL INFORMATION**

For additional information, contact us at 903-808-3492.

**EMERGENCY CONTACT:  
(903) 808-3492**

<b>PRODUCTS/DOT GUIDEBOOK ID#/GUIDE#:</b>		
Natural Gas	1971	115

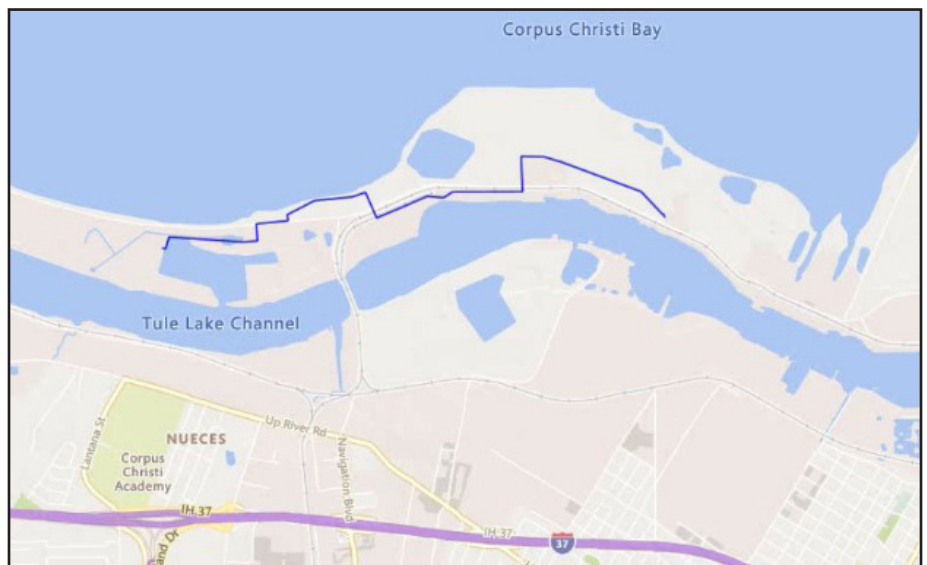
**TEXAS  
COUNTIES OF OPERATION:**

Brooks	Nueces
Hidalgo	Orange
Newton	San Jacinto

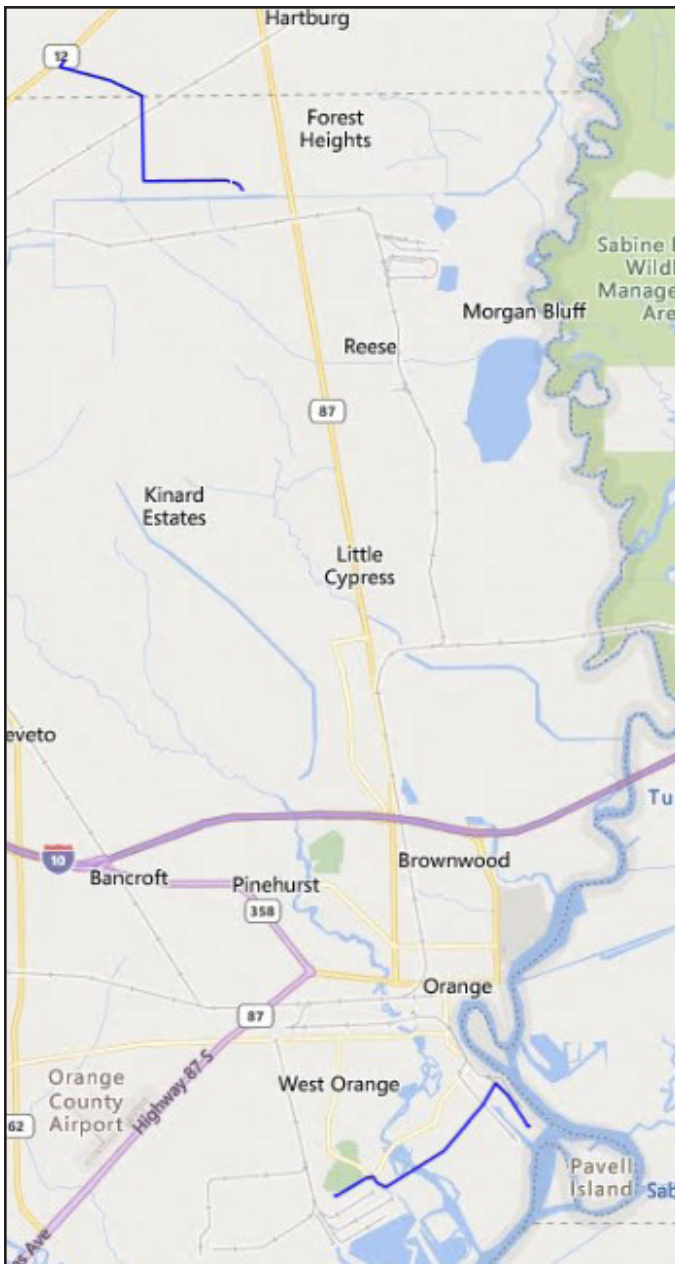
*Changes may occur. Contact the operator to discuss their pipeline systems and areas of operation.*

**PRODUCTS TRANSPORTED**

<b>PRODUCT</b>	<b>LEAK TYPE</b>	<b>VAPORS</b>
<b>NATURAL GAS</b>	Gas	Lighter than air and will generally rise and dissipate. May gather in a confined space and travel to a source of ignition.
<b>HEALTH HAZARDS</b>	Will be easily ignited by heat, sparks or flames and will form explosive mixtures with air. Vapors may cause dizziness or asphyxiation without warning and may be toxic if inhaled at high concentrations. Contact with gas or liquefied gas may cause burns, severe injury and/or frostbite.	



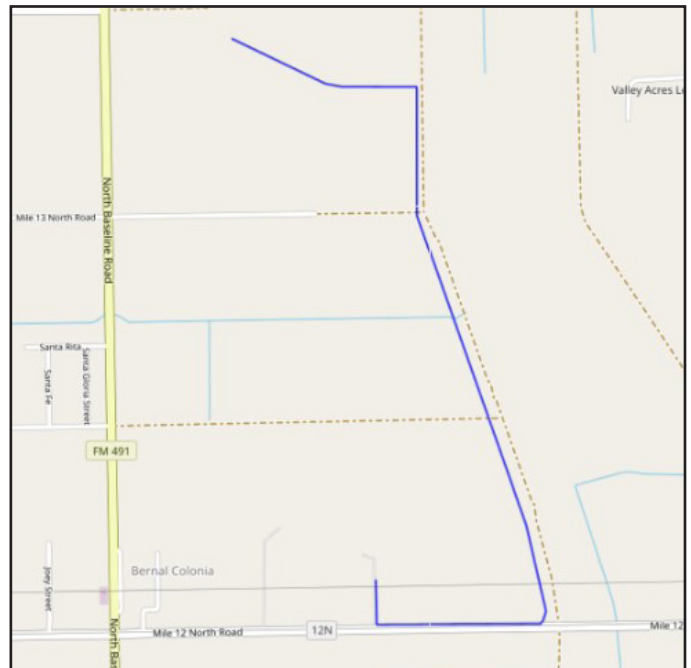
The ST TR 750 A#1 Pipeline System is a Gathering Pipeline that is 8” in diameter in Nueces County.



The Phoenix Pipeline System is a Gathering Pipeline that is 4” to 8” in diameter in Orange County Texas. The Cluster Pipeline System is a Gathering Pipeline that is 6” in diameter in Newton and Orange Counties.



The Church of the Brethren Pipeline System is a Gathering Pipeline that is 4.5” in diameter in Brooks County.



The Schuster Pipeline System is a Transmission Pipeline that is 2” in diameter in Hidalgo County.