



2950 N. Harwood St. Ste 1550  
 Dallas, TX 75201  
 Main Phone: 214-613-3493  
 Website: www.sentinelmidstream.com

**ABOUT SENTINEL MIDSTREAM OPERATING LLC**

Sentinel Midstream Operating LLC offering first-class midstream solutions for crude oil transportation and natural gas gathering. We operate pipelines in Harris County, TX and West Baton Rouge, Iberville, Ascension, St. James, Assumption and Lafourche Parish, LA.

**SIGNS OF A PIPELINE LEAK COULD INCLUDE**

- Blowing or hissing sound
- Dust blowing from a hole in the ground
- Continuous bubbling in wet or flooded areas
- Gaseous or hydrocarbon odor
- Dead or discolored vegetation in a green area
- Flames, if a leak has ignited

**WHAT DOES SENTINEL MIDSTREAM OPERATING LLC DO IF A LEAK OCCURS?**

**PROTECT LIFE**

- Follow Emergency Response Plans, if applicable
- Evacuate personnel and public to a safe point and isolate area
- Provide safe rescue of personnel
- Provide first aid: Call 911 and EMS
- Transport

**MITIGATE SITUATION**

- Shut off hazardous energy sources
- Find closest valve to limit fuel to site
- Call appropriate agencies

**COMMUNICATE UP**

- Employees - inform supervisors of emergency
- Supervisors - assess the situation and keep lines of communication open to both on-site employees and operations management
- Provide input regarding the need for additional personnel, technical services, contract specialists, etc.
- Notify corporate management as appropriate as well as the Safety/Environmental Specialist

**SECURE SITE**

- Control traffic
- Set up safe perimeter/evaluate wind (use gas detection meter)
- Cooperate with law enforcement and appropriate agencies
- Refer media to spokesperson



**PIPELINE LOCATION AND MARKERS**

Pipeline markers are used to indicate the approximate location of a natural gas pipeline and to provide contact information. Aerial patrol planes also use the markers to identify the pipeline route. Markers should never be removed or relocated by anyone other than a pipeline operator.

**MAINTAINING SAFETY AND INTEGRITY OF PIPELINES**

Sentinel Midstream Operating LLC invests significant time and capital maintaining the quality and integrity of their pipeline system. Sentinel Midstream Operating LLC actively participates in Texas811, a qualified one-call center. For more information on affected

**EMERGENCY CONTACT:  
1-888-303-3460**

<b>PRODUCTS / DOT GUIDEBOOK ID# / GUIDE#:</b>		
Crude Oil	1267	128
Nitrogen	1066	121

**TEXAS  
COUNTIES OF OPERATION:**

Harris

**LOUISIANA  
PARISHES OF OPERATION:**

Ascension                      Lafourche  
 Assumption                  St. James  
 Iberville                        West Baton Rouge

*Changes may occur. Contact the operator to discuss their pipeline systems and areas of operation.*

HCA segments or Sentinel's Integrity Management Plan please contact Evan Wehking at 713-725-8456.

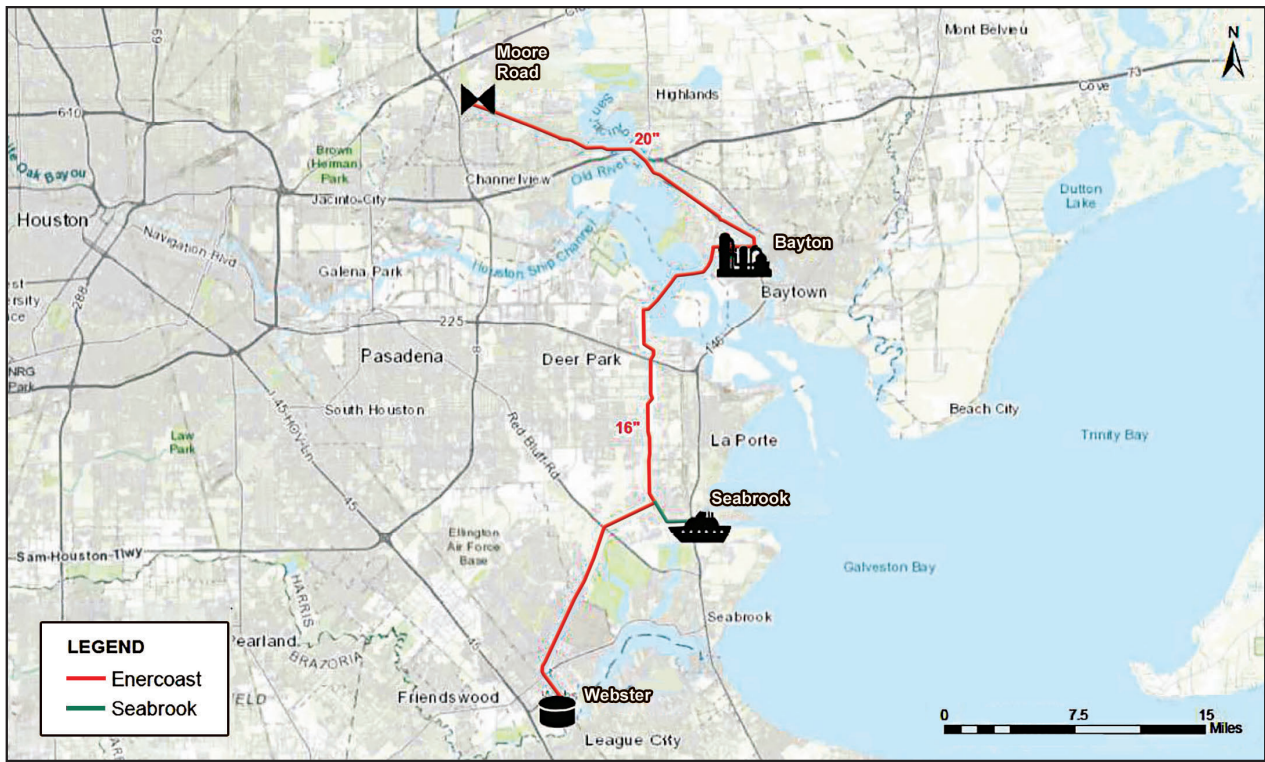
**HOW TO GET ADDITIONAL INFORMATION**

For additional information about Sentinel Midstream Operating LLC visit [www.sentinelmidstream.com](http://www.sentinelmidstream.com) or contact us directly.

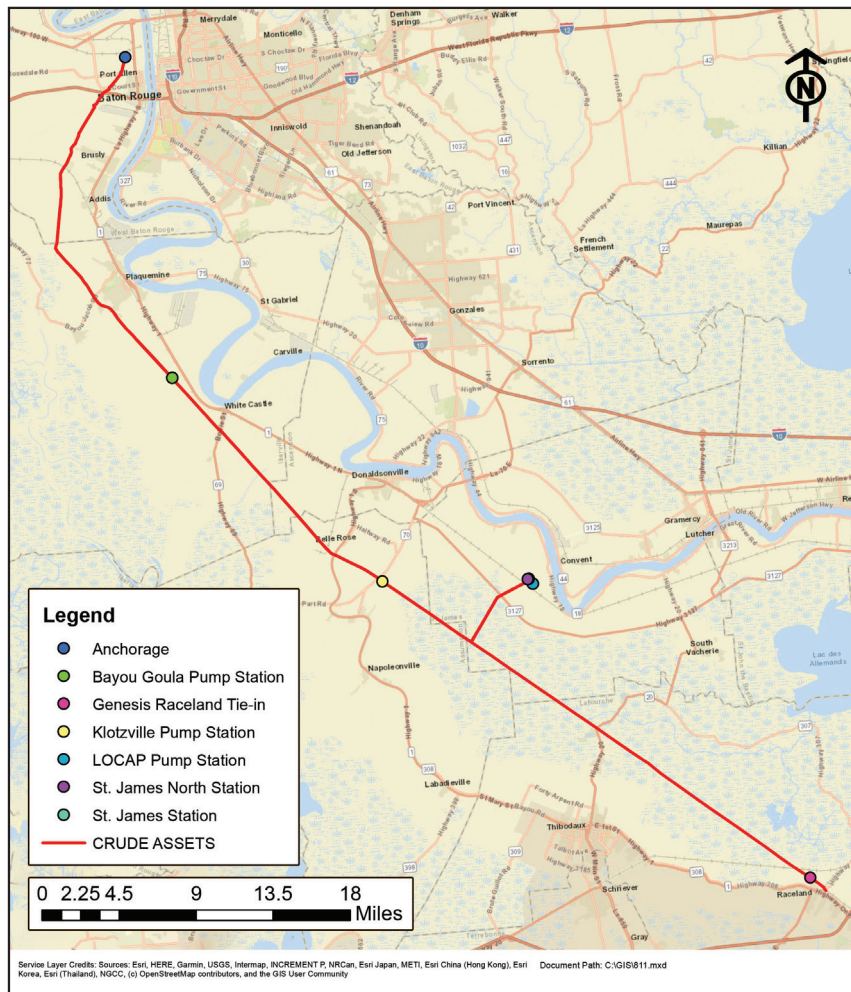


**PRODUCTS TRANSPORTED IN YOUR AREA**

PRODUCT	LEAK TYPE	VAPORS
CRUDE OIL	Liquid	Can be flammable. Dark brown spots on the ground, dead vegetation or an oily sheen on top of the ground or floating on the surface of a body of water may indicate the presence of a leak in a crude oil pipeline system.
HEALTH HAZARDS		Will be easily ignited by heat, sparks or flames and will form explosive mixtures with air. Vapors may cause dizziness or asphyxiation without warning and may be toxic if inhaled at high concentrations. Contact with gas or liquefied gas may cause burns, severe injury and/or frostbite. Fire may produce irritating and/or toxic gases.
NITROGEN	Gas	Initially heavier than air and spread along ground. Vapors may travel to source of ignition and flash back.
HEALTH HAZARDS		Product is a simple asphyxiant and non-flammable. Vapors may cause dizziness or asphyxiation without warning and may be toxic if inhaled. Contact with gas or liquefied gas may cause burns, severe injury and/or frostbite.



Texas System Map



Louisiana System Map