



19026 Ridgewood Pkwy, Suite 200
 San Antonio, TX 78258
 Main Phone: 210-709-0714 or 210-495-5577

ABOUT STARTEX FIELD SERVICES, LLC

Natural gas gathering system in DeWitt County.

WHAT ARE SIGNS OF A NATURAL GAS PIPELINE LEAK?

- Blowing or hissing sound
- Dust blowing from a hole in the ground
- Continuous bubbling in wet or flooded areas
- Gaseous or hydrocarbon odor
- Dead or discolored vegetation in a green area
- Flames, if a leak has ignited

WHAT DOES STARTEX FIELD SERVICES, LLC DO IF A LEAK OCCURS?

PROTECT LIFE

- Follow Emergency Response Plans
- Evacuate personnel and public to a safe point and isolate area
- Provide safe rescue of personnel
- Provide first aid: Call EMS
- Transport

MITIGATE SITUATION

- Shut off hazardous energy sources
- Find closest valve to limit fuel to site
- Call appropriate agencies

COMMUNICATE UP

- Employees - inform supervisors of emergency
- Supervisors - assess the situation and keep lines of communication open to both on-site employees and operations management
- Provide input regarding the need for additional personnel, technical services, contract specialists, etc.
- Notify corporate management as appropriate as well as the Safety/ Environmental Specialist

SECURE SITE

- Control traffic
- Set up safe perimeter/evaluate wind (use gas detection meter)
- Cooperate with law enforcement and appropriate agencies
- Refer media to spokesperson

PIPELINE LOCATION AND MARKERS

Pipeline markers are used to indicate the approximate location of a natural gas pipeline and to provide contact information. Aerial patrol craft also use the markers to identify the pipeline route. Markers should never be removed or relocated by anyone other than a pipeline operator.



MAINTAINING SAFETY AND INTEGRITY OF PIPELINES

Startex Field Services, LLC invests significant time and capital maintaining the quality and integrity of their pipeline system.

**EMERGENCY CONTACT:
1-210-569-6756**

PRODUCTS/ DOT GUIDEBOOK ID#/ GUIDE#:		
Natural Gas	1971	115

**TEXAS
COUNTIES OF OPERATION:**

DeWitt

Changes may occur. Contact the operator to discuss their pipeline systems and areas of operation.

Startex Field Services, LLC actively participates in Texas811, a qualified one-call center.

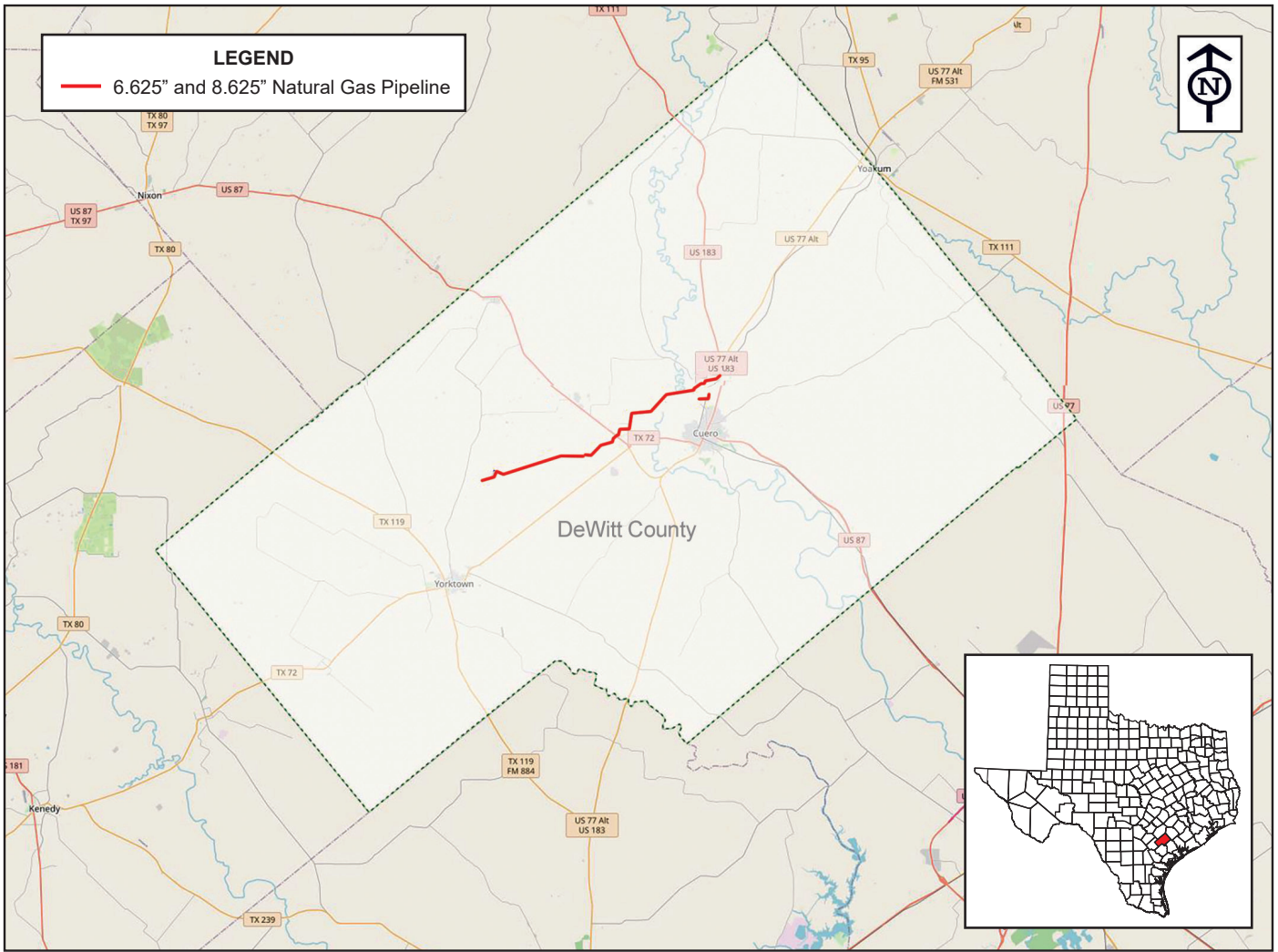


HOW TO GET ADDITIONAL INFORMATION

For additional information about Startex Field Services, LLC, or our operations, contact us directly.

PRODUCTS TRANSPORTED IN YOUR AREA

<u>PRODUCT:</u>	NATURAL GAS
<u>LEAK TYPE:</u>	Gas
<u>VAPORS:</u>	Lighter than air and will generally rise and dissipate. May gather in a confined space and travel to a source of ignition.
<u>HEALTH HAZARDS:</u>	Will be easily ignited by heat, sparks or flames and will form explosive mixtures with air. Vapors may cause dizziness or asphyxiation without warning and may be toxic if inhaled at high concentrations. Contact with gas or liquefied gas may cause burns, severe injury and/or frostbite.



Base map courtesy of openstreetmap.org