



Groesbeck
 301 W. Longbotham
 Groesbeck, TX 76642
 Phone: 254-255-4542
 Website: www.crescentpass.com

ABOUT CRESCENT PASS ENERGY

Crescent Pass Energy is a Natural Gas Production and Gathering Company that is located in East Texas. Crescent Pass Energy operates and maintains approximately 362 miles of intra-state pipelines with 7.27 miles of intra-state regulated pipelines. Crescent Pass Energy operates and maintains approximately 362 miles of intra state pipelines. Tiger Gas Utility LLC, a subsidiary of Crescent Pass Energy, operates 1.27 miles of regulated pipeline in Harrison County.

COMMITMENT TO SAFETY, HEALTH & ENVIRONMENT

A fundamental commitment at Crescent Pass Energy is the protection our employees, our contractors, the public, and the environment. Crescent Pass Energy’s EHS policy guides all of our activities and will not be compromised in any business endeavor. We will:

- Comply with all applicable environmental, health and safety laws and regulations
- Implement the EHS Policy through demonstrated leadership and the application of appropriate resources.
- Assign responsibility and accountability throughout Linn for EHS performance by setting quantifiable goals, tracking progress and reporting results.



- Anticipate and manage risk through business processes that emphasize prevention but prepare us to effectively respond in the event of an incident.
- Train our employees so we can operate safely and meet our EHS commitment.
- Expect that all contractors and other parties engaged in activities on our operated properties comply with our standards as well as all applicable EH&S laws and regulations.
- Conduct reviews and evaluations of our assets and operations as appropriate to identify hazards, verify compliance, and continuously improve EH&S performance.

PRODUCTS TRANSPORTED

Product: Natural Gas

Leak Type: Gas

Vapors: Lighter than air and will generally rise and dissipate. May gather in a confined space and travel to a source of ignition.

EMERGENCY CONTACT:
 1-254-255-4545

PRODUCTS/DOT GUIDEBOOK ID#/GUIDE#:		
Natural Gas	1971	115

TEXAS
COUNTIES OF OPERATION:

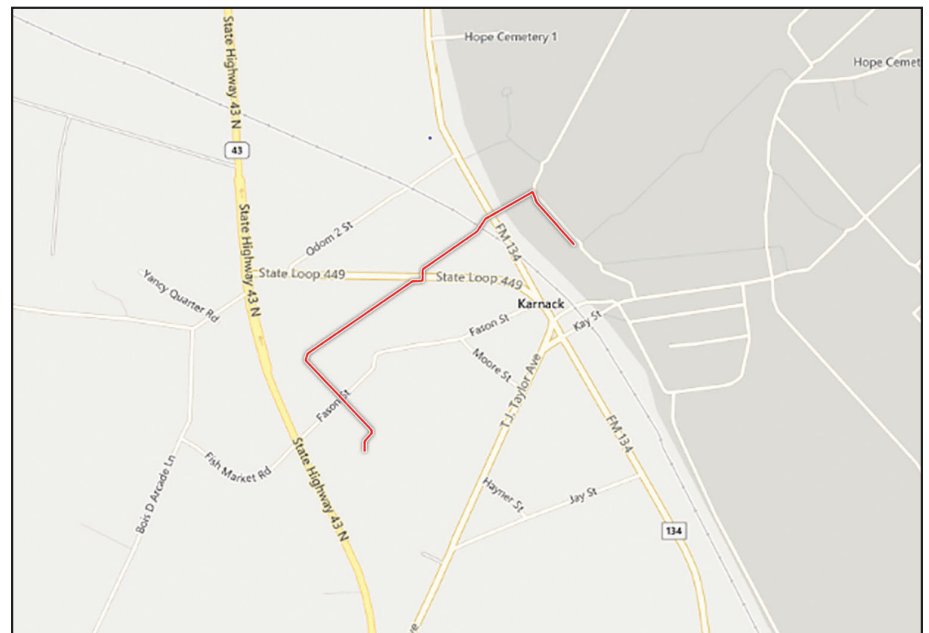
Harrison

Changes may occur. Contact the operator to discuss their pipeline systems and areas of operation.

Health Hazards: Will be easily ignited by heat, sparks or flames and will form explosive mixtures with air. Vapors may cause dizziness or asphyxiation without warning and may be toxic if inhaled at high concentrations. Contact with gas or liquefied gas may cause burns, severe injury and/or frostbite.

HOW TO GET ADDITIONAL INFORMATION

For additional information on Crescent Pass Energy, please contact us at 254-255-4542 .



Pipeline Diameter = 6" - 8"

Base map courtesy of openstreetmap.org