



HEADQUARTERS  
 920 Memorial City Way, Ste 1400  
 Houston, TX 77024  
 Website: WildFire-Energy.com

**ABOUT WILDFIRE ENERGY**

WildFire Energy (WildFire) is a privately held midstream company engaged in the gathering of natural gas in Texas.

**WHAT DOES WILDFIRE DO IF A LEAK OCCURS?**

To prepare for the event of a leak, pipeline companies regularly communicate, plan and train with local emergency responders. Upon the notification of an incident or leak the WildFire will immediately dispatch trained personnel to assist emergency responders.

Pipeline operators and emergency responders are trained to protect life, property and facilities in the case of an emergency.

Pipeline operators will also take steps to minimize the amount of product that leaks out and to isolate the pipeline emergency.

**MAINTAINING SAFETY AND INTEGRITY OF PIPELINES**

We believe it is our responsibility to be good neighbors and maintain a strong commitment to damage prevention and safety through the implementation of industry developed best management practices and monitoring of our operations. Our commitment extends to employees, contractors, local communities, and others who may be impacted by our operations. We conduct our operations in a responsible manner to protect human health and safety while minimizing environmental impacts.

**HOW TO GET ADDITIONAL INFORMATION**

For additional information about WildFire’s emergency response plans and procedures, please contact:

Tony Villasana  
 EHS & Regulatory, Director  
 832-558-0100  
 Tony@WildFire-Energy.com



**Know what's below.  
 Call before you dig.**

**BEFORE YOU DIG**

Contact a Texas one call center by calling 811 or visiting [www.texas811.org](http://www.texas811.org) at least 48 hours in advance (two business days, excluding weekends and holidays) before you dig.

**RECOGNIZING A LEAK**

In the unlikely event of a pipeline leak: You might see, hear, or smell

- Dirt being blown into the air
- Discolored vegetation
- A white vapor stream or mist-like cloud
- A roaring, blowing, or hissing sound
- An unusual sulfur or rotten egg odor

Sight



Sound



Smell



**EMERGENCY CONTACT:  
 1-800-631-1632**

<b>PRODUCTS/ DOT GUIDEBOOK ID#/ GUIDE#:</b>		
Natural Gas	1971	115

**TEXAS  
 COUNTIES OF OPERATION:**

Brazos                      Robertson  
 Burleson

*Changes may occur. Contact the operator to discuss their pipeline systems and areas of operation.*

**RESPONDING TO A LEAK**

**EVACUATE THE AREA IMMEDIATELY**

- Abandon any equipment being used in the area
- Move upwind of the product release
- Avoid open flames
- Avoid introducing any sources of ignition
- Do not start or turn off motor vehicles or electrical equipment
- Call our 24 hour emergency number and 911

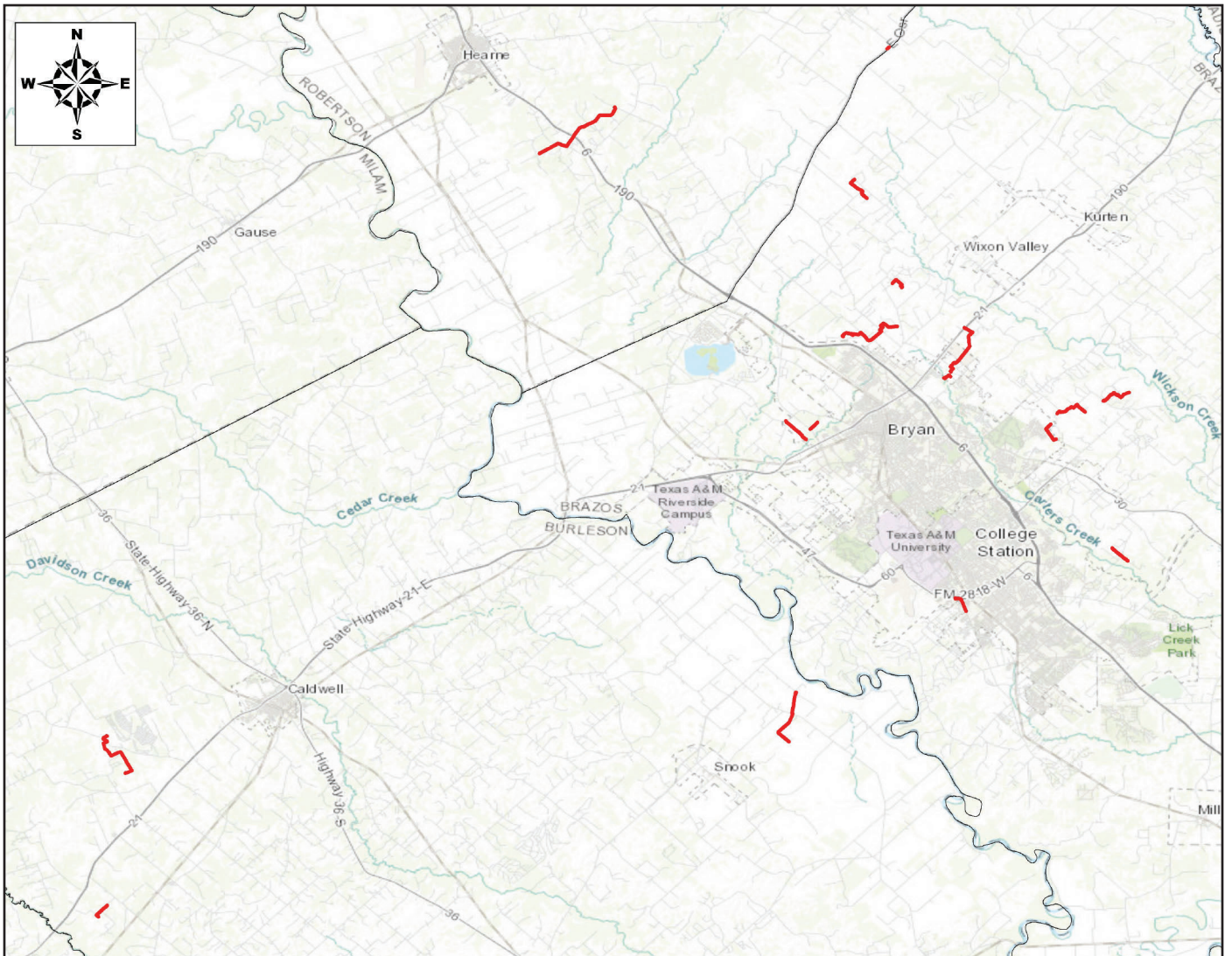
**PIPELINE MARKERS**



**PRODUCTS TRANSPORTED IN YOUR AREA**

PRODUCT	LEAK TYPE	VAPORS
NATURAL GAS	Gas	Lighter than air and will generally rise and dissipate. May gather in a confined space and travel to a source of ignition.
<b>HEALTH HAZARDS</b>	Will be easily ignited by heat, sparks or flames and will form explosive mixtures with air. Vapors may cause dizziness or asphyxiation without warning and may be toxic if inhaled at high concentrations. Contact with gas or liquefied gas may cause burns, severe injury and/or frostbite.	

# WildFire Energy



Base map courtesy of ESRI