



## COMPANY OVERVIEW

Arsenal Midstream LLC is headquartered in Pittsburgh, PA and operates approximately 12 miles of regulated underground natural gas gathering pipeline. Arsenal Midstream strives to transport natural gas in a safe, reliable, compliant, environmentally responsible, and cost-effective manner. Our operations are within the Marcellus Shale regions of West Virginia with pipe sizes ranging from 8" - 30" traversing Harrison & Taylor Counties. Arsenal Midstream is committed to safety and dedicated to educating the communities in which we operate on pipelines, pipeline safety and damage prevention to protect the safety and health of those who live and work near our pipelines and pipeline facilities.

## ENSURING YOUR SAFETY

Pipelines are the safest method to transport energy. The U.S. Department of Transportation records show that pipelines consistently have the highest safety record among all major transportation systems and are the most efficient means of transporting natural gas and petroleum products. Pipeline transportation is vital to meeting our nation's growing energy needs and supply over two-thirds of our nation's energy.

Arsenal Midstream is committed to operational safety and environmental stewardship. We regularly patrol our pipeline rights-of-way, conduct leak surveys, monitor our corrosion protection system, and perform preventative maintenance to ensure safe and reliable transportation of natural gas. Pipeline incidents are rare, however as with any type of transportation, you need to exercise caution. Possible hazards associated with an unintended release from a gas pipeline facility include gas migrating near or inside a building, natural gas fires or natural gas explosions. Although these situations are not commonplace, it is important to review the guidelines

contained within this profile for steps that should be taken if you suspect a gas pipeline release.

Arsenal Midstream has an established emergency response plan and our employees are trained and prepared to handle emergencies should one arise. The emergency response plan is available to all emergency officials upon request. For more detailed information or to review the emergency response plan, please call (724) 940-1100.



**Know what's below.  
Call before you dig.**

## CALL BEFORE YOU DIG

One of the largest contributors to pipeline incidents is third-party damage caused by someone digging in the vicinity of a pipeline without knowing its exact location. It is required by law that excavators who plan to dig call 811 or contact the WV-One Call System by dialing 1-800-245-4848 at least two (2) business days in advance of any planned excavation activity so that the exact location of any underground utilities can be marked prior to breaking ground. If while digging you strike or touch an Arsenal Midstream pipeline or facility, you should stop immediately and report it by calling our emergency number. Even a minor scrape or dent can result in future safety problems. It is extremely important that we inspect the pipeline for any potential damage, whether apparent or not. Don't take chances – Call Before You Dig. For more details, please visit [www.call811.com](http://www.call811.com).

## PIPELINE MARKERS

Pipeline markers are important to public safety. Pipeline Markers are used to indicate the approximate – NOT EXACT - location of pipelines. They also provide the name of the company

## EMERGENCY CONTACT:

1-877-839-6295

### PRODUCTS/ DOT GUIDEBOOK ID#/ GUIDE#:

Natural Gas	1971	115
-------------	------	-----

### WEST VIRGINIA COUNTIES OF OPERATION:

Barbour	Marion
Harrison	Taylor

*Changes may occur. Contact the operator to discuss their pipeline systems and areas of operation.*

that operates the pipeline, the product being transported and the company's emergency contact number. You will notice these markers along Arsenal Midstream's pipeline routes and where our pipelines intersect with streets, railroads, bodies of water and high-traffic areas. Don't rely solely on the presence or absence of a pipeline marker. Always call 811 before you dig.



## CORROSION TEST STATIONS

In addition to pipeline markers, you also might see along the roadway or in a field, small vertical metal or plastic pipes with square or round heads on top. There are corrosion test stations and are used to monitor the corrosion protection system on the pipeline.

## HOW TO RECOGNIZE A NATURAL GAS PIPELINE LEAK/RELEASE

Although pipeline leaks are uncommon, it is important to be able to recognize the proper warning signs.

### SIGHT:

- Dirt blowing from a hole in the ground.
- Water bubbling or being blown into the air at a body of water.
- Flames, if leak has ignited, burning above or coming from the ground.
- Dead/discolored or dying vegetation on or near a pipeline right-of-way in the midst of green vegetation.
- A dry patch or frozen spot on the right-of-way.

### SOUND:

- Volume can range from a quiet hissing to a loud roar depending on the size of the leak.

### SMELL:

- Unusual gaseous or hydrocarbon odor.
- Natural gas is colorless and odorless.
  - (Unless Mercaptan has been added ("rotten egg" odor).

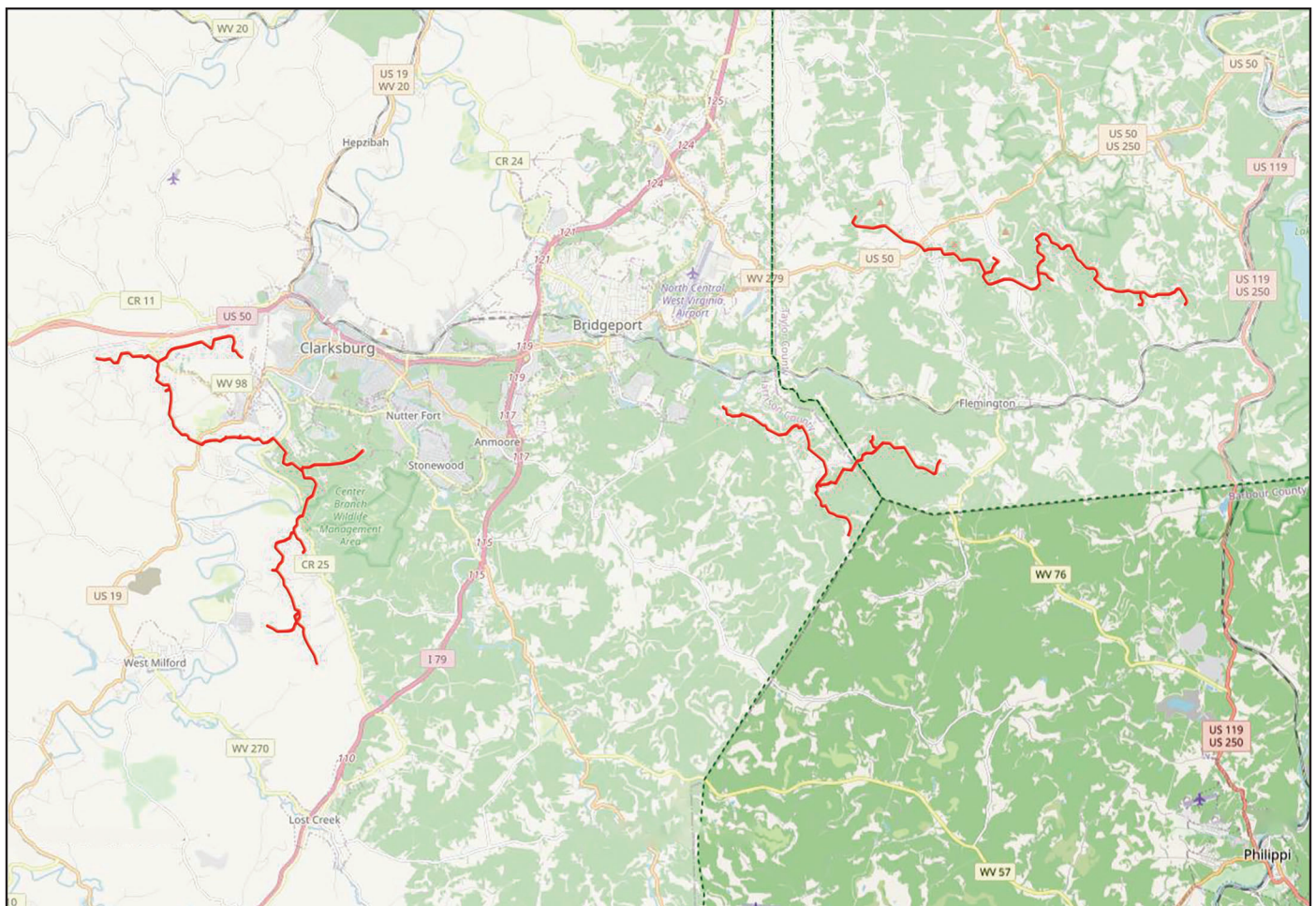
### STEPS THAT SHOULD BE TAKEN IN THE EVENT OF A PIPELINE LEAK/RELEASE

1. Immediately evacuate the house, building and nearby area, evacuate upwind and advise others to stay away.
2. Do not turn lights on or off, or use your garage door opener.
3. Do not use your home or cell phone to make calls from inside or near the house, building or immediate vicinity.
4. Do not close doors or windows. Leave them open while exiting, which will allow gas to travel outside.

5. Do not light a match, start an engine or anything else that could cause a spark.
6. Do not attempt to operate any pipeline valves.
7. From a safe location, call Arsenal Midstream at 1-877-839-6295 and call 911.
8. Wait for Arsenal Midstream to tell you it is safe to return to your house, building or property.

### HOW TO GET ADDITIONAL INFORMATION

For additional information contact us directly at 724-940-1100 during normal business hours and ask for the DOT Compliance Department.



8" – 30" Natural Gas Pipelines